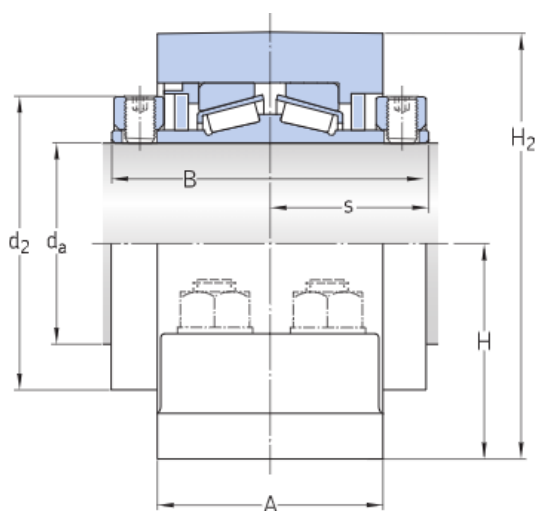


## P4BE 115M-TRB-STH

### Pillow block roller bearing units

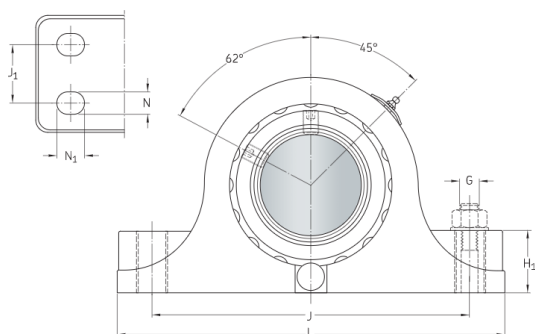
#### Technical specification

Metric/inch shaft	Inch
Bearing type	Tapered roller bearing
Bearing position	Locating
Locking method	Set screws
Sealing solution	Heavy-duty seals



#### DIMENSIONS

$d_a$	115 mm	Shaft diameter
$d_2$	155.575 mm	Collar outer diameter
A	117.475 mm	Housing foot width
B	171.45 mm	Inner ring width
H	120.65 mm	Height base to center
$H_1$	69.85 mm	Housing foot height
$H_2$	238.125 mm	Housing height
J	min. 336.55 mm	Distance between attachment bolts, max.
J	max. 349.25 mm	Distance between attachment bolts, min.
J	342.9 mm	Distance of attachment bolts
$J_1$	63.5 mm	Axial distance bolt to bolt



L	422.275 mm	Housing length
N	23.813 mm	Width foot slot width
N <sub>1</sub>	30.163 mm	Length of attachment bolt hole
s	85.725 mm	Centre line unit to side face of inner ring

## CALCULATION DATA

Basic dynamic load rating	C	454 kN
Basic static load rating	C <sub>0</sub>	735 kN
Fatigue load limit	P <sub>u</sub>	76.5 kN
Comparative radial load rating	C <sub>F</sub>	125 kN
Limiting speed		1 300 r/min
Limiting value	e	0.52
Axial load factor	Y <sub>1</sub>	1.3
Axial load factor	Y <sub>2</sub>	1.9
Axial load factor	Y <sub>0</sub>	1.3
Bearing mean diameter	d <sub>m</sub>	145.113 mm
Axial holding force of the locking mechanism	P <sub>a</sub>	31.1 kN

## MASS

Mass bearing unit	40.2 kg
-------------------	---------

## MOUNTING INFORMATION

Attachment bolt diameter	G	0.75 in
Set screws		4 x 5/8-11
Tightening torque for set screws		148.58 Nm
Grease quantity for relubrication		28.3 g

## More information

Product details	Engineering information	Engineering tools
<a href="#">Pillow block units - metric series</a>	<a href="#">Principles of selecting mounted bearing solutions</a>	<a href="#">Bearing Select</a>
<a href="#">Pillow block units - inch series</a>	<a href="#">Bearing failure and how to prevent it</a>	<a href="#">Rolling bearings mounting and dismounting instructions</a>
<a href="#">Permissible misalignment</a>		
<a href="#">Locating / non-locating support</a>		
<a href="#">Loads</a>		
<a href="#">Temperature limits</a>		
<a href="#">Permissible speed</a>		
<a href="#">Lubrication</a>		
<a href="#">Mounting and dismounting</a>		
<a href="#">Condition Monitoring</a>		
<a href="#">Associated products</a>		
<a href="#">Ordering information</a>		
<a href="#">Designation system for SKF Pillow block roller bearing units</a>		

# Terms and conditions

By accessing and using this website / app owned and published by AB SKF (publ.) (556007-3495 · Gothenburg) ("SKF"), you agree to the following terms and conditions:

## Warranty Disclaimer and Limitation of Liability

Although every care has been taken to assure the accuracy of the information on this website / app, SKF provides this information "AS IS" and DISCLAIMS ALL WARRANTIES, EXPRESS OR IMPLIED, INCLUDING, BUT NOT LIMITED TO, IMPLIED WARRANTIES OF MERCHANTABILITY AND FITNESS FOR A PARTICULAR PURPOSE. You acknowledge that your use of this website / app is at your sole risk, that you assume full responsibility for all costs associated with use of this website / app, and that SKF shall not be liable for any direct, incidental, consequential, or indirect damages of any kind arising out of your access to, or use of the information or software made available on this website / app. Any warranties and representations in this website / app for SKF products or services that you purchase or use will be subject to the agreed upon terms and conditions in the contract for such product or service. Further, for non-SKF websites / apps that are referenced in our website / app or where a hyperlink appears, SKF makes no warranties concerning the accuracy or reliability of the information in these websites / apps and assumes no responsibility for material created or published by third parties contained therein. In addition, SKF does not warrant that this website / app or these other linked websites / apps are free from viruses or other harmful elements.

## Copyright

Copyright in this website / app copyright of the information and software made available on this website / app rest with SKF or its licensors. All rights are reserved. All licensed material will reference the licensor that has granted SKF the right to use the material. The information and software made available on this website / app may not be reproduced, duplicated, copied, transferred, distributed, stored, modified, downloaded or otherwise exploited for any commercial use without the prior written approval of SKF. However, it may be reproduced, stored and downloaded for use by individuals without prior written approval of SKF. Under no circumstances may this information or software be supplied to third parties.

This website /app includes certain images used under license from Shutterstock, Inc.

## Trademarks and Patents

All trademarks, brand names, and corporate logos displayed on the website / app are the property of SKF or its licensors, and may not be used in any way without prior written approval by SKF. All licensed trademarks published on this website / app reference the licensor that has granted SKF the right to use the trademark. Access to this website / app does not grant to the user any license under any patents owned by or licensed to SKF.

## Changes

SKF reserves the right to make changes or additions to this website / app at any time.