

Sealing rings Model 910.17

WIKA Datasheet 910.17

Applications

- For pressure gauges on pressure-reducing valves

Special features

- Optimal sealing in a readable orientation



Sealing rings model 910.17 from various materials and sizes

Description

Problem

As is generally known, the use of flat sealing washers from soft or non-ferrous metals for pressure gauges, valves and other fittings is often problematic. The screwed connections must be tight, and at the same time, the parts being connected must be in the desired orientation with respect to each other.

Either the pressure gauge is not in the required readable position or the valve is not in the desired operating position, or in the ideal position there is no sealing.

Consequently, it becomes necessary to unscrew and replace flat sealing washers by washers with different thicknesses several times, until the desired sealing quality is achieved.

WIKA solution

With the WIKA sealing ring it is possible to orientate the pressure gauge to the desired position by turning up to a full turn after sealing has been made.

Due to its slightly different form and the higher strength of its material, the WIKA stainless steel sealing ring enables an excellent sealing quality after only a slight turn, but in this material only approx. a further ½ turn is possible for orientation.

Available are two versions:

Version 1:

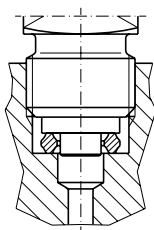
For self-centering on the centering spigot in accordance with EN 837-1.

Version 2:

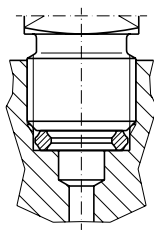
For centering in the bore hole, intended for pressure gauge connectors not featuring a spigot or sealing shoulder.

Mounting examples

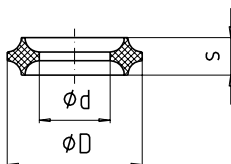
Version 1
centering with spigot

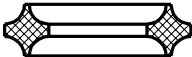


Version 2
centering in bore



Dimensions in mm



Design	Thread size	Material	Dimensions in mm			Version	Order No.
			D +0.2	d -0.2	s		
	G 1/8	Cu	8 + 0.1	4.1 + 0.1	2.7	1	9090789
	G 1/4, M12 x 1.5	Al	9.3	5.4	3.2	1	9090797
	G 1/4, M12 x 1.5	Cu	9.3	5.4	3.2	1	9090800
	G 1/4, M12 x 1.5	1.4571	9.3	5.4	3.2	1	9092161
	G 3/8, G 1/2, M20 x 1.5	Cu	14.8	8	4.2	1	9090819
	G 3/8, G 1/2, M20 x 1.5	1.4571	14.8	8	4.2	1	9092099
	G 1/4	Al	11	5.5	3.2	2	9092269
	G 1/4	Cu	11	5.5	3.2	2	9092277
	M12 x 1.5	Cu	9.8	5.5	3.2	2	9092285
	G 1/2	Cu	18.2	11	4.2	2	9092293

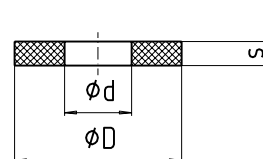
Sealing washers per EN 837-1 (and similar design)


These sealing washers are intended to seal connection of pressure gauges to suitable pipe fittings. The dimensions of the sealing washers comply with the EN 837-1 connection standard and are available are washers of copper (Cu), nickel (Ni), asbestos-free Novapress 300 (NP uni) and PTFE materials.

The PTFE washer with a thickness of 0.5 mm is primarily intended to suit diaphragm gauges with threaded connections, the wetted parts of which are protected against aggressive media by a PTFE lining. With metal washers there is a risk of the PTFE lining being damaged.

The PTFE washer with a thickness of 2.0 mm is mainly intended to suit pressure gauges and chemical seals used for the food industry, where in general the wetted parts are of stainless steel.

Dimensions

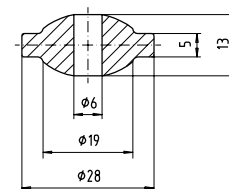


Design	Thread size	Material	Dimensions in mm			Order No.
			D	d	s	
	G 1/4 *	Cu	9.5	5.2	1.5	9091424
	G 1/4 *	NP uni	9.5	5.2	1.5	9091432
	G 1/2 *	Cu	17.5	6.2	2	9091440
	G 1/2	NP uni	17.5	6.2	2.5	9091459
	G 1/2 *	Ni	17.5	6.2	2	9091467
	G 1/4	PTFE	9.5	5.2	0.5	9092080
	G 1/2	PTFE	17.5	6.2	0.5	9091173
	G 1/2	PTFE	17.5	7	2	9091505

* per EN 837-1

Special sealing rings

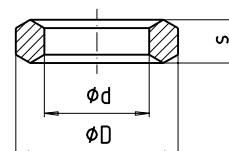
To fit pressure gauges with G 3/4 B lens-seal type connector (e.g. in combination with flange No. 9091165 as per data sheet AC 09.05) a lens-type sealing ring as per EN 837-1 is available.

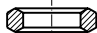


Design	Thread size	Material	Dimensions	Order No.
Lenstype	G 3/4	St	EN 837-1	9091483

Double-edge type bulkhead sealing rings

These sealing rings are included for replacement purposes and intended for solder-free tube fittings and bulkhead fittings where the seal is made underneath the hexagon flats of the fitting. Normally, appropriate sealing rings are originally supplied with the fitting.



Design	Thread size	Material	Dimensions in mm			Order No.
			D	d	s	
	G 1/4	St	11.3	6	4.5	9092234
	G 1/2	ST	18.5	12	5	9092242
	G 1/2	1.4571	18.5	12	5	9092250

Ordering Information

To order the described products the 7-digit order no. is sufficient / Optional extras required

The specifications given in this document represent the state of engineering at the time of publishing.
We reserve the right to make modifications to the specifications and materials.

Ordering information

Pressure gauge model / Nominal size / Scale range / Size of connection / Optional extras required
Specifications and dimensions given in this leaflet represent the state of engineering at the time of printing.
Modifications may take place and materials specified may be replaced by others without prior notice.



WIKAI Instrument Corporation
1000 Wiegand Boulevard
Lawrenceville, GA 30043
Tel (770) 513-8200 Toll-free 1-888-WIKA-USA
Fax (770) 338-5118
E-Mail info@wika.com
www.wika.com