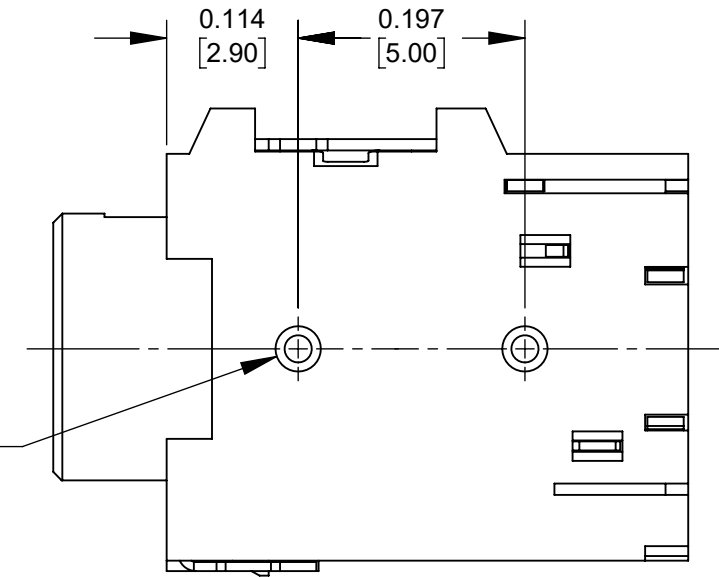


SCHMATIC



CUSTOMER DRAWING

NOTES:

- MATERIALS:**
HOUSING - THERMOPLASTIC, BLACK
SLEEVE - COPPER ALLOY, GOLD FLASHED
TERMINALS - COPPER ALLOY, TIN PLATED
- THIS PRODUCT IS RoHS COMPLIANT.

| REV | ECO NUMBER | DATE | BY | APVD |
|-----------|------------|----------|----|------|
| A | 28481 | 03/03/22 | PC | TJK |
| REVISIONS | | | | |

UNLESS OTHERWISE SPECIFIED
 1. ALL DIMENSIONS IN INCHES [mm]
 - TWO PLACE DECIMALS ±0.02 [0.5]
 - THREE PLACE DECIMALS ±0.005 [0.13]

DO NOT SCALE DRAWING

| | | | | | | | | | |
|--|-------|------|-------|---------------|-------------------|--|-----|--|--|
| THIS DRAWING DESCRIBES A DESIGN CONSIDERED PROPRIETARY IN NATURE, DEVELOPED AND MANUFACTURED BY SWITCHCRAFT INC. AND IS RELEASED ON A CONFIDENTIAL BASIS FOR IDENTIFICATION PURPOSES ONLY. | | | | | | | | | |
| SIZE | WIDTH | MULT | LBS/M | TEMPER | | | | | |
| FINISH SPEC No. | | | | | MATERIAL SPEC No. | | | | |
| FIRST USED ON | | | | | SCALE 6:1 | | | | |
| DATE DRAWN | BY | CHKD | APVD | | | | | | |
| 10/27/21 | TS | TS | TJK | | | | | | |
| | | | | 10/27/21 | 3/1/22 | | | | |
| NAME | | | | PART No. | | | REV | | |
| 3.5MM JACK, 4 CONDUCTOR, RoHS | | | | 35RAPC6CHWNSN | | | A | | |