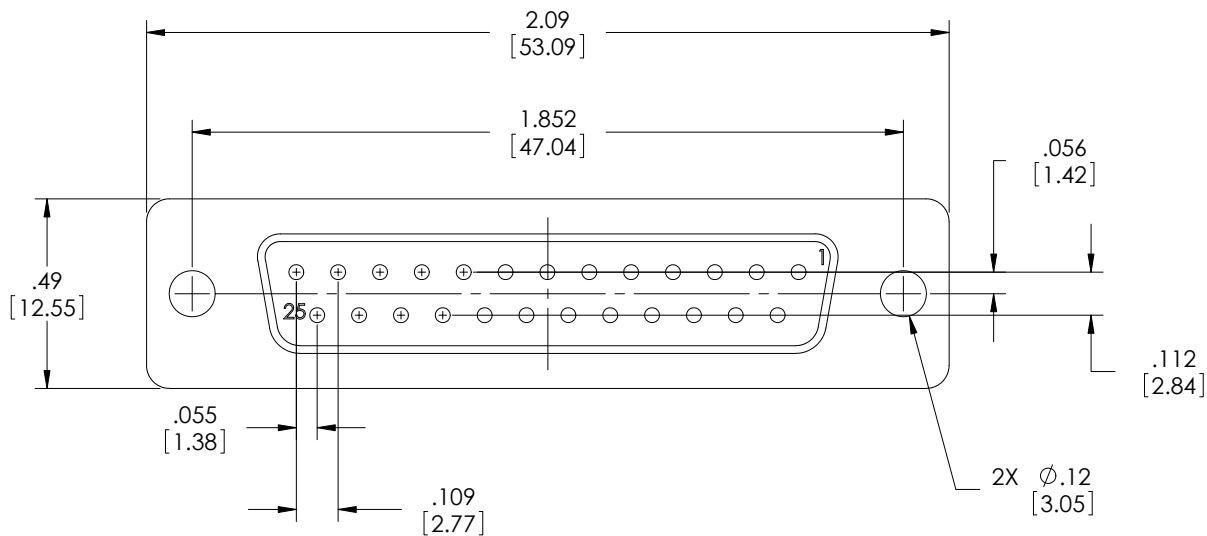
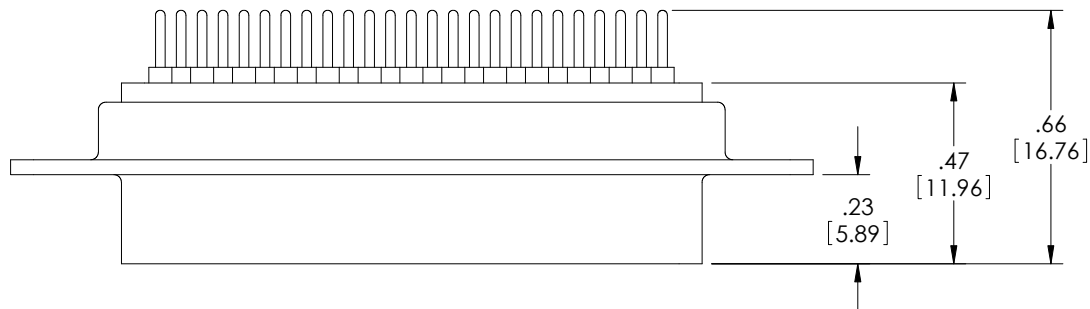


THE INFORMATION CONTAINED IN THIS DRAWING IS THE SOLE
PROPERTY OF L-COM, INC. ANY REPRODUCTION IN PART OR WHOLE
WITHOUT THE WRITTEN PERMISSION OF L-COM, INC. IS PROHIBITED.

REVISIONS			
REV	DESCRIPTION	DATE	APPROVED
A	DRAWING REPLACES SD25S-PC-OD1	10/20/2014	D.CASTRO
B	ECN 9944: REVISED CUREENT RATING TO 1 AMP FROM 5 AMP	07/18/2019	BGATES



NOTES:

MATERIALS:

SHELL: COLD ROLLED STEEL
CONTACTS: BRASS
INSULATOR: THERMOPLASTIC PBT, UL94V-0

FINISH:

SHELL: TIN PLATED
CONTACT SURFACES: GOLD

ELECTRICAL:

CURRENT RATING: 1 AMP
DIELECTRIC WITHSTANDING VOLTAGE: 1000 VAC
INSULATION RESISTANCE: 1000 MΩ PER MINUTE @ 500 VDC
CONTACT RESISTANCE: 20mΩ MAX

MISCELLANEOUS:

OPERATING TEMPERATURE: -55°C ~ +105°C
ALL DIMENSIONS ARE FOR REFERENCE ONLY

REGULATORY COMPLIANCE:

EU RoHS DIRECTIVE (MOST RECENT RELEASED VERSION)

UNLESS OTHERWISE SPECIFIED, DIMENSIONS ARE IN INCHES [mm] OVERALL CABLE LENGTH TOLERANCE: ≤12 [305] ≤60 [1524] = +2 [51] / -0 >12 [305] ≤60 [1524] = +2 [51] / -0 >60 [1524] ≤120 [3048] = +4 [102] / -0 >120 [3048] ≤300 [7620] = +6 [152] / -0 >300 [7620] = +5% / -0% ALL OTHER DIMENSIONAL TOLERANCES: .X = ±.2 [5.08] .XX = ±.02 [51] .XXX = ±.005 [13] PROJECTION 	APPROVALS	DATE	 50 HIGH STREET NORTH ANDOVER, MA 01845	
	DRAWN BY B.MAZEJKA	12/18/2003		
	CHECKED BY C.MCCORMICK	12/19/2003	CATEGORY D-SUBMINIATURE	
	APPROVED BY D.PARHAM	12/19/2003	PRODUCT DESCRIPTION CONNECTOR, DB25F PCB	
COLOR VARIATIONS MAY OCCUR		SIZE A	FSCM NO. 43321	DWG. NO. SD25S-PC
		SCALE: NONE	CAD FILE: SD25S-PC.SLDDRW	REV. B
		SHEET 1 OF 1		