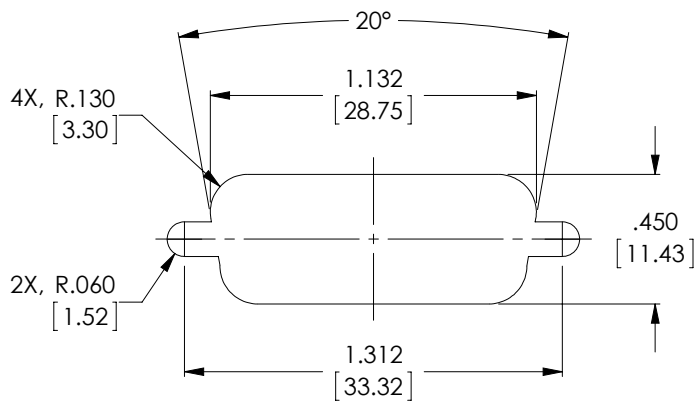


THE INFORMATION CONTAINED IN THIS DRAWING IS THE SOLE PROPERTY OF L-COM, INC. ANY REPRODUCTION IN PART OR WHOLE WITHOUT THE WRITTEN PERMISSION OF L-COM, INC. IS PROHIBITED.

RoHS Compliant ✓

| REVISIONS | | | |
|-----------|-----------------|----------|-----------|
| REV | DESCRIPTION | DATE | APPROVED |
| A | INITIAL RELEASE | 11/15/12 | D.GRIFFIN |
| | | | |
| | | | |



RECOMMENDED PANEL OPENING

NOTE: SDG450XS JACKSCREWS AND SDHS HEX NUTS ARE REQUIRED FOR PANEL MOUNTING
***PANEL THICKNESS MUST NOT EXCEED .062 [1.57]**

NOTES:

MATERIAL:

SHELL: STEEL
 CONTACTS: COPPER ALLOY
 INSULATOR: PBT FIBER REINFORCED (UL94V-0 RATED)

FINISH:

SHELL: TIN/NICKEL PLATED
 CONTACTS: GOLD FLASH PLATED, 1-5μ INCHES

ELECTRICAL:

CURRENT RATING: 3 AMP
 INSULATION RESISTANCE: 1000 MΩ MIN @500 VDC
 DIELECTRIC WITHSTANDING VOLTAGE: 1000 VAC (FOR ONE MINUTE)

MISCELLANEOUS:

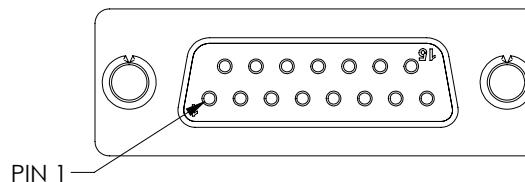
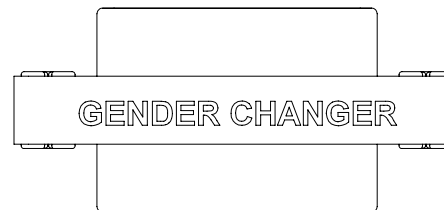
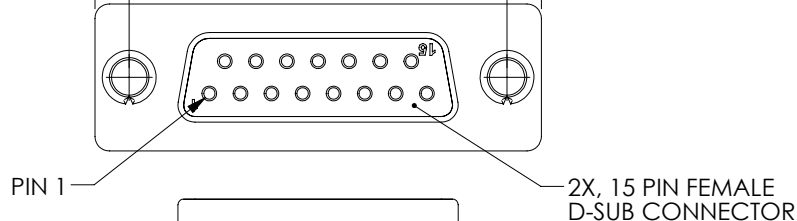
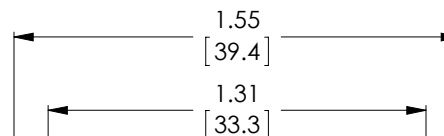
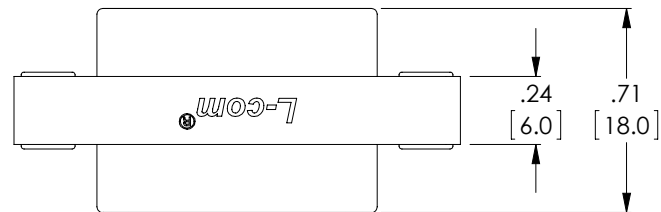
OPERATING TEMPERATURE RANGE: -55°C TO +105°C.
 ALL CONTACTS WIRED STRAIGHT THROUGH.
 COMPONENT SHALL BE TESTED FOR CONTINUITY.
 ALL DIMENSIONS ARE FOR REFERENCE ONLY.

LABELING:

PANTONE 2945 BLUE. "L-COM" FONT MyriaMM ITALIC.
 "GENDER CHANGER" FONT ARIAL BOLD, TEXT HEIGHTS; .085"
 TEXT COLOR; WHITE.

PACKAGING:

COMPONENT SHALL BE INDIVIDUALLY PACKAGED IN ACCORDANCE WITH L-COM SPECIFICATION PS-0031.



| | | | | |
|---|--|----------------------------|---|--|
| UNLESS OTHERWISE SPECIFIED, DIMENSIONS ARE IN INCHES [mm] OVERALL CABLE LENGTH TOLERANCE: $\le 12 [305] = +1 [25] / -0$ $>12 [305] \le 60 [1524] = +2 [51] / -0$ $>60 [1524] \le 120 [3048] = +4 [102] / -0$ $>120 [3048] \le 300 [7620] = +6 [152] / -0$ $>300 [7620] = +3\% / -0\%$ ALL OTHER DIMENSIONAL TOLERANCES: .X = ±.2 .XX = ±.02 .XXX = ±.005 | APPROVALS | DATE | | 45 BEECHWOOD DRIVE NORTH ANDOVER, MA 01845 |
| | DRAWN BY D. DESJARDIN | 11/2/12 | | |
| | CHECKED BY D. PARHAM | 11/5/12 | CATEGORY D-SUBMINIATURE | |
| | APPROVED BY S. SMITH | 11/15/12 | PRODUCT DESCRIPTION ADPT, GNDR CHGR DB15 SLIM F/F NO HARDWARE | |
| PROJECTION | CONFIGURATION DETAILS OF UNDIMENSIONED FEATURES MAY VARY | COLOR VARIATIONS MAY OCCUR | SIZE A | FSCM NO. 43321 |
| | | | DWG. NO. GCP15F | REV. A |
| | | | SCALE: NONE | CAD FILE: GCP15F.SLDDRW |
| | | | | SHEET 1 OF 1 |