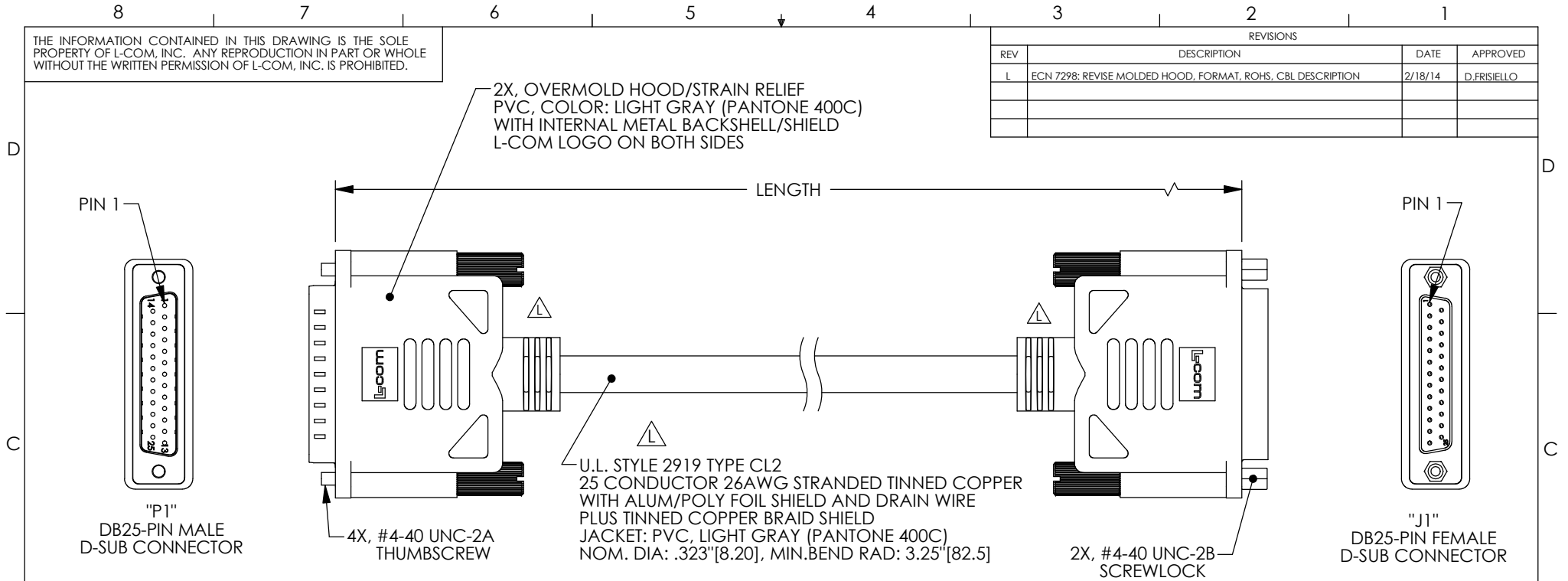


THE INFORMATION CONTAINED IN THIS DRAWING IS THE SOLE PROPERTY OF L-COM, INC. ANY REPRODUCTION IN PART OR WHOLE WITHOUT THE WRITTEN PERMISSION OF L-COM, INC. IS PROHIBITED.

REVISIONS			
REV	DESCRIPTION	DATE	APPROVED
L	ECN 7298: REVISE MOLDED HOOD, FORMAT, ROHS, CBL DESCRIPTION	2/18/14	D.FRISIELLO



"P1"	WIRE COLOR	"J1"
1	BLACK	1
2	BROWN	2
3	RED	3
4	ORANGE	4
5	YELLOW	5
6	GREEN	6
7	BLUE	7
8	VIOLET	8
9	GRAY	9
10	WHITE	10
11	PINK	11
12	PINK/BLACK	12
13	LIGHT GREEN	13
14	BLACK/WHITE	14
15	BROWN/WHITE	15
16	RED/WHITE	16
17	ORANGE/WHITE	17
18	GREEN/WHITE	18
19	BLUE/WHITE	19
20	VIOLET/WHITE	20
21	RED/BLACK	21
22	ORANGE/BLACK	22
23	YELLOW/BLACK	23
24	GREEN/BLACK	24
25	GRAY/BLACK	25
SHELL	DRAIN WIRE	SHELL

MODEL NUMBER	LENGTH	
	(FEET)	(METERS)
CS2N25MF-1	1.0	0.31
CS2N25MF-2.5	2.5	0.76
CS2N25MF-5	5.0	1.52
CS2N25MF-6	6.0	1.83
CS2N25MF-10	10.0	3.05
CS2N25MF-12	12.0	3.66
CS2N25MF-15	15.0	4.57
CS2N25MF-25	25.0	7.62
CS2N25MF-50	50.0	15.24

NOTES:

1. CABLE ASSEMBLY SHALL BE TESTED FOR CONTINUITY.
2. CABLE ASSEMBLY SHALL BE INDIVIDUALLY PACKAGED IN ACCORDANCE WITH L-COM SPECIFICATION PS-0031.

REGULATORY COMPLIANCE:
CE2011/65/EU(RoHS DIRECTIVE)

UNLESS OTHERWISE SPECIFIED, DIMENSIONS ARE IN INCHES [mm] OVERALL CABLE LENGTH TOLERANCE: ≤ 12 [305] = +1 [25] / -0 >12 [305] ≤ 60 [1524] = +2 [51] / -0 >60 [1524] ≤ 120 [3048] = +4 [102] / -0 >120 [3048] ≤ 300 [7620] = +6 [152] / -0 >300 [7620] = +5% / -0% ALL OTHER DIMENSIONAL TOLERANCES: .X = ± .2 [5.08] .XX = ± .02 [1.51] .XXX = ± .005 [1.13]	APPROVALS DRAWN BY TJC CHECKED BY DFP APPROVED BY RC	DATE 9/27/01 9/28/01 10/4/01	45 BEECHWOOD DRIVE NORTH ANDOVER, MA 01845	
	CONFIGURATION DETAILS OF UNDIMENSIONED FEATURES MAY VARY			CATEGORY D-SUBMINIATURE
	PROJECTION 	COLOR VARIATIONS MAY OCCUR	SIZE A	FSCM NO. 43321
	SCALE: NONE		DWG. NO. CS2N25MF	PRODUCT DESCRIPTION CABLE, DB25M/F DBL SHLD
CAD FILE: CS2N25MF.SLDDRW		SHEET 1 OF 1	REV. L	