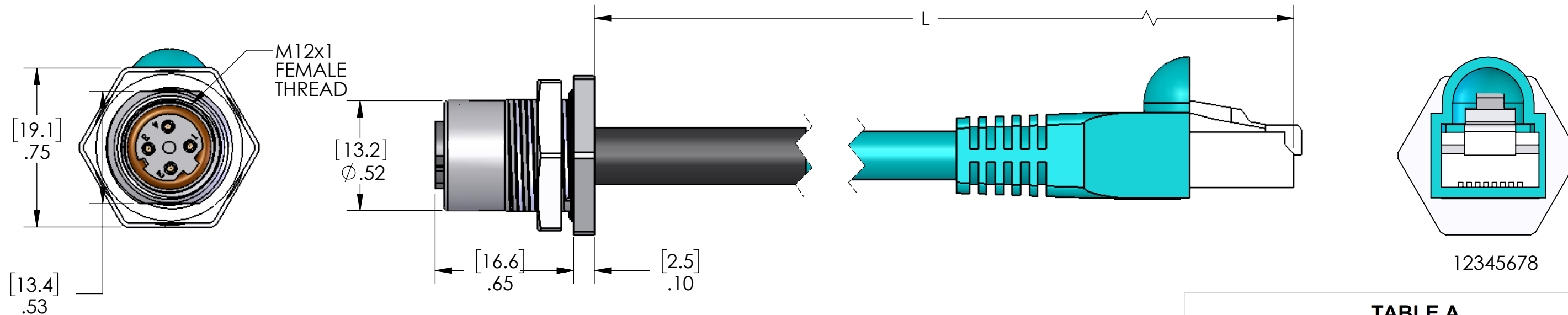
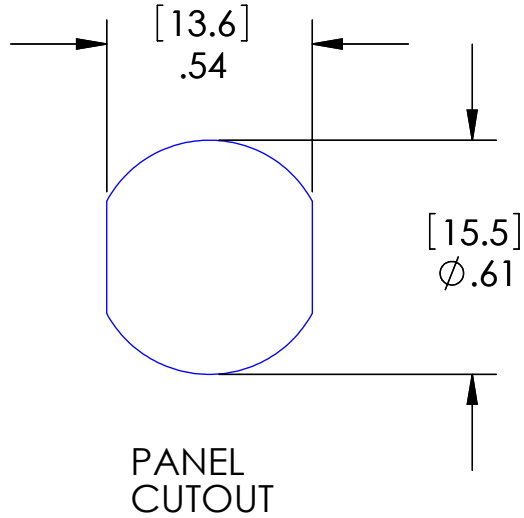


MDE45	COLOR	RJ45
PIN #		PIN #
1	WHITE w/ORANGE	1
2	WHITE w/GREEN	3
3	ORANGE	2
4	GREEN	6



MATERIALS:	
BODY:	BLACK PVC
COUPLING:	NICKEL PLATED BRASS
INSERT:	POLYAMIDE
CONTACTS:	GOLD PLATED COPPER ALLOY
CABLE:	2 PR 24 AWG CAT 5e PVC CABLE W/ BRAID & FOIL SHIELDS
O-RINGS:	FPM & NBR

APPROVALS:	
US:	UL LISTED
CANADA:	C-UL LISTED



PROPRIETARY AND CONFIDENTIAL
 THE INFORMATION CONTAINED IN THIS DRAWING IS THE SOLE PROPERTY OF MENCOM CORPORATION. ANY REPRODUCTION IN PART OR AS A WHOLE WITHOUT THE WRITTEN PERMISSION OF MENCOM CORPORATION IS PROHIBITED.

VOLTS	42VDC
AMPS	1.5A
TEMP:	80°C

UNLESS OTHERWISE SPECIFIED:
 DIMENSIONS ARE IN INCHES AND [MM]
 MATERIAL
 FINISH
 DO NOT SCALE DRAWING

TABLE A	
P/N	L
MDE45-4FR-RJ45-BM	12" [0.3m]
MDE45-4FR-RJ45-BM-0.5M	20" [0.5m]
MDE45-4FR-RJ45-BM-1M	40" [1m]
MDE45-4FR-RJ45-BM-2M	79" [2m]
MDE45-4FR-RJ45-BM-3M	118" [3m]
MDE45-4FR-RJ45-BM-4M	157" [4m]
MDE45-4FR-RJ45-BM-5M	197" [5m]
MDE45-4FR-RJ45-BM-10M	393" [10m]

DRAWN BY: JJH		MENCOM CORPORATION	
DRAWN DATE: 12/06/2018		TITLE:	
CHECKED BY: JJH		4 PL MDE45 TO RJ45 BK MT	
CHECK DATE: 12/06/2018		SIZE DWG. NO. REV	
COMMENTS:		B MDE45-4FR-RJ45-BM-ZZ C	
SCALE: 2:1	WEIGHT:	SHEET 1 OF 1	