

Straight Blade Devices
20A, 125V
DIN Rail Utility Box- GFCI Duplex
Receptacles



Features

- It provide utility power to any control cabinet
- Optional auxiliary contacts for feed through capability
- Pre-wired "kits" are available for end-user customization

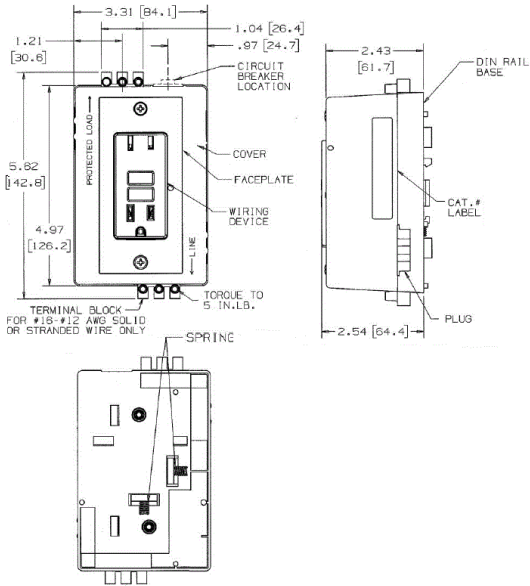


Ordering Information

Description	Device Color	UPC	Catalog Number
Complete unit, faceless with aux GFCI contacts	Gray	783585108247	DRUBGFI20BFAC

Listings

UL Listed
Certified to CSA



Resources

Customer Use Drawing
eCatalog

