

CUSTOMER PRINT

PART NUMBER: CARA6380XSPXXX90

NOTES:

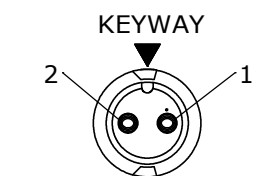
1. FINISHED PRODUCT TO BE COILED
2. OVERMOLD BOOT MATERIAL: UV PBT, BLACK
3. ELECTRICAL TEST: 100% CONTINUITY
4. ALL DIMENSIONS ARE REFERENCE EXCEPT THOSE WITH A TOLERANCE

| ASS'Y P/N        | NO. OF CONTACTS |
|------------------|-----------------|
| CARA63802SPXXX90 | 2               |
| CARA63803SPXXX90 | 3               |
| CARA63804SPXXX90 | 4               |
| CARA63805SPXXX90 | 5               |
| CARA6380XSPXXX90 |                 |

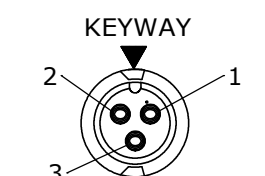
CABLE LENGTH IN "INCHES"  
NO. OF CONTACTS

| ASS'Y P/N        | "X" DIM                                |
|------------------|--|
| CARA6380XSP03990 | 3 FT. 3 1/2 IN. ±2 IN. [1M ±50.8mm]    |
| CARA6380XSP07990 | 6 FT. 7 IN. ±2 IN. [2M ±50.8mm]        |
| CARA6380XSP19790 | 16 FT. 5 IN. ±4 IN. [5M ±101.6mm]      |
| CARA6380XSP39490 | 32 FT. 9 3/4 IN. ±8 IN. [10M ±203.2mm] |
| CARA6380XSPXXX90 |  |

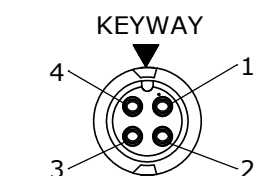
CABLE LENGTH IN "INCHES"  
NO. OF CONTACTS



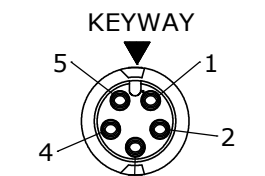
**END "A"**  
FACE VIEW  
CARA63802SPXXX90



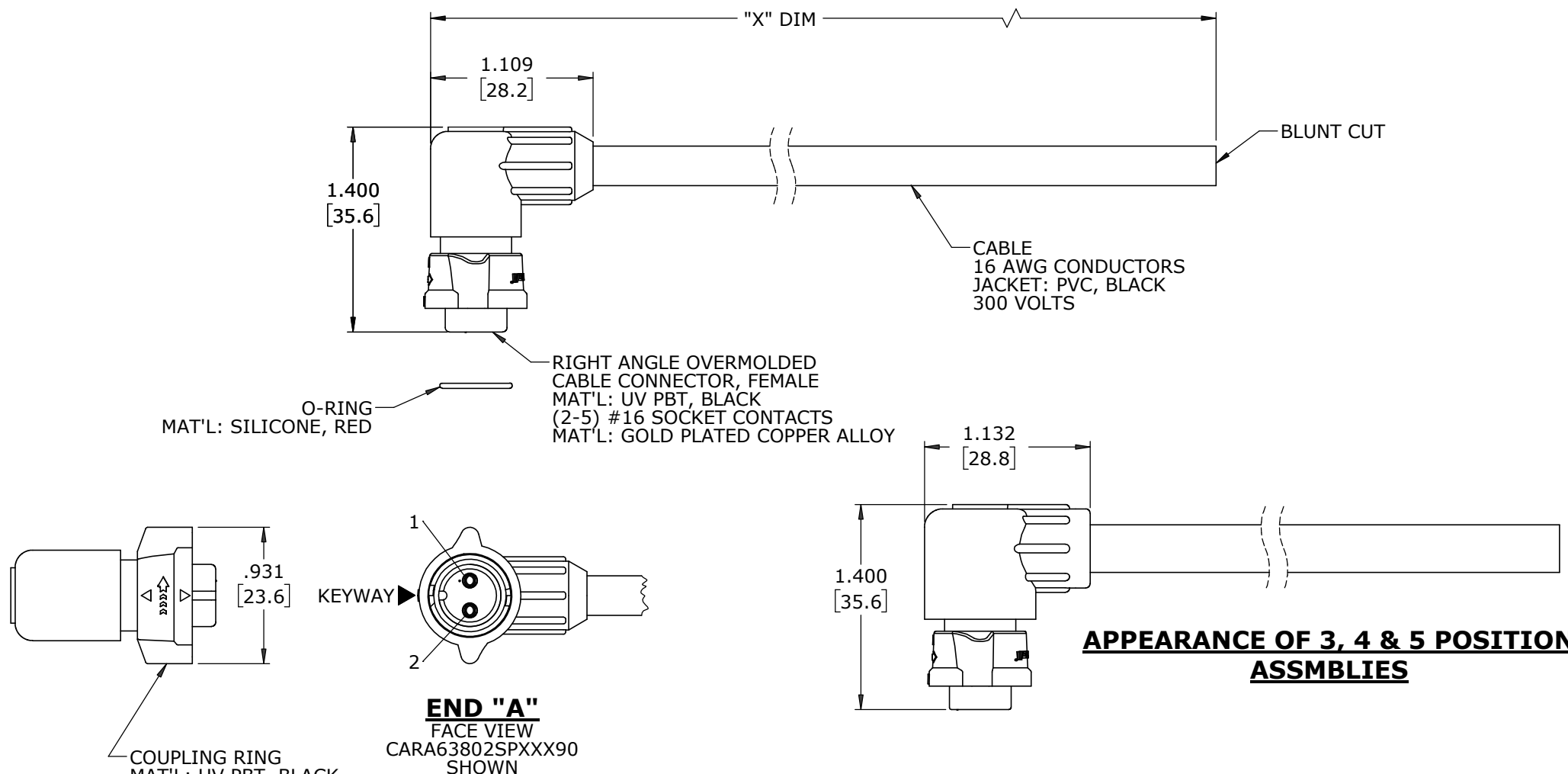
**END "A"**  
FACE VIEW  
CARA63803SPXXX90



**END "A"**  
FACE VIEW  
CARA63804SPXXX90



**END "A"**  
FACE VIEW  
CARA63805SPXXX90



DIMENSIONS IN BRACKETS [ ] ARE IN MILLIMETERS UNLESS INDICATED

| ASSY P/N         | CABLE                      | COLOR CODE END "A" |        |        |        |        |
|------------------|----------------------------|--------------------|--------|--------|--------|--------|
| CARA63802SPXXX90 | 2/16 AWG<br>O.D. 0.270 REF | COLOR CODE         |        |        |        |        |
|                  |                            | POS. 1             | POS. 2 | BLK    | WHT    |        |
| CARA63803SPXXX90 | 3/16 AWG<br>O.D. 0.275 REF | WIRE COLOR CODE    |        |        |        |        |
|                  |                            | POS. 1             | POS. 2 | POS. 3 | BLK    | WHT    |
|                  |                            |                    |        |        | GRN    |        |
| CARA63804SPXXX90 | 4/16 AWG<br>O.D. 0.300 REF | WIRE COLOR CODE    |        |        |        |        |
|                  |                            | POS. 1             | POS. 2 | POS. 3 | POS. 4 | BLK    |
|                  |                            |                    |        |        |        | WHT    |
|                  |                            |                    |        |        |        | GRN    |
| CARA63805SPXXX90 | 5/16 AWG<br>O.D. 0.325 REF | WIRE COLOR CODE    |        |        |        |        |
|                  |                            | POS. 1             | POS. 2 | POS. 3 | POS. 4 | POS. 5 |
|                  |                            |                    |        |        |        |        |
|                  |                            |                    |        |        |        | BLK    |
|                  |                            |                    |        |        |        | WHT    |

**CUSTOMER APPROVAL**

THIS DOCUMENT CONTAINS CONFIDENTIAL INFORMATION PROPRIETARY TO CONXALL CORPORATION. ANY REPRODUCTION, DISCLOSURE, OR USE OF THIS DOCUMENT /INFORMATION IS EXPRESSLY PROHIBITED UNLESS AUTHORIZED IN WRITING BY CONXALL CORPORATION.

APPROVED BY: \_\_\_\_\_  
DATE: \_\_\_\_\_

**RoHS COMPLIANT**

|  |            |  |   |
|--|------------|--|---|
| A  | MA         | 06-07-21   | DRAWING CREATED PER DOR 21-109359DS         |
| REV.   | INIT.      | DATE   | DESCRIPTION                                 |
|  | MA         | 06-07-21   | ORIG. DRAWN BY: DATE: MA 06-07-21           |
| ALL INFORMATION ILLUSTRATED IS THE PROPERTY OF "CONXALL CORPORATION". UNAUTHORIZED DUPLICATION OR DISTRIBUTION OF THIS DOCUMENT IS PROHIBITED. |            |  | <p>601 E. WILDWOOD VILLA PARK, IL 60181</p> |
| ALL UNITS ARE IN FEET, INCHES, FRACTION OF INCHES AND DECIMALS.  |            |  |   |
| APPROVED BY:   |            | TITLE: CABLE ASSEMBLY (2-5) #16 SOCKET CONTACTS INSTA-CLICK™ MINI-CON-X STANDARD PRODUCT |   |
| SCALE  | SIZE       | SHEET  | CUSTOMER:                                   |
| NTS  | B          | 1 OF 1   | CARA6380XSPXXX90                            |
| FILE:  | DIRECTORY: | PART NUMBER:   | REV   |
| CARA6380XSPXXX90   | SLW        | CARA6380XSPXXX90   | A   |