

Industrial Ethernet Switch - FL SWITCH 1000-8POE-GT



1102079

<https://www.phoenixcontact.com/us/products/1102079>

Please be informed that the data shown in this PDF document is generated from our Online Catalog. Please find the complete data in the user documentation. Our General Terms of Use for Downloads are valid.



PoE+ Ethernet switch conforms to IEEE 802.3at. Includes eight 10/100/1000 Mbps PoE+ ports, a total PoE system budget of 120 W, and jumbo frames up to 9216 bytes.

Your advantages

- Additional isolation for greater safety in SELV and PELV installations
- Local diagnostic indicators with LEDs
- Auto negotiation and autocrossing detection simplifies installation and setup
- PROFINET Conformance Class A for real-time data exchange
- Automatic detection of IEEE 802.3at or 802.3af powered devices
- QoS-prioritized (Quality of Service) messages
- Enhanced traffic prioritization for automation protocols
- Energy-efficient Ethernet in accord. with IEEE 802.3az
- Transmission speed of 10/100/1000 Mbps on all RJ45 ports
- PROFINET PTCP filter for reliable communication on PROFINET networks

Industrial Ethernet Switch - FL SWITCH 1000-8POE-GT



1102079

<https://www.phoenixcontact.com/us/products/1102079>

Commercial Data

Item number	1102079
Packing unit	1 pc
Sales Key	C23
Product Key	DNN115
GTIN	4055626961569
Weight per Piece (including packing)	636.2 g
Weight per Piece (excluding packing)	636.2 g
Customs tariff number	85176200
Country of origin	TW

Industrial Ethernet Switch - FL SWITCH 1000-8POE-GT



1102079

<https://www.phoenixcontact.com/us/products/1102079>

Technical Data

Dimensions

Width	27 mm
Height	130 mm
Depth	120 mm

Notes

Notes on operation	Mode A PoE
Utilization restriction	
EMC note	EMC: class A product, see manufacturer's declaration in the download area

Mounting

Mounting type	DIN rail mounting
---------------	-------------------

Interfaces

Ethernet

Connection method	RJ45 jack
Note on the connection method	Auto negotiation and autocrossing
Transmission speed	10/100/1000 Mbps
Transmission physics	Ethernet RJ45
Transmission length	100 m (Between transmitter / receiver)
Signal LEDs	LNK/ACT, POE

Ethernet (PoE)

Connection method	RJ45 jack
Transmission speed	10/100/1000 Mbps
Transmission physics	Ethernet RJ45
Transmission length	100 m (Between transmitter / receiver)
Signal LEDs	LNK/ACT, POE
No. of channels	8 (RJ45 ports)

Product properties

Type	Stand-alone
Product type	Switch
MTTF	49.4 Years (MIL-HDBK-217F standard, temperature 25°C, operating cycle 100%)

Switch functions

Basic functions	Store-and-forward switch, 10/100/1000 Mbps, auto negotiation, PoE according to IEEE 802.3at/802.3af, jumbo frames up to 9216 bytes
PROFINET conformance class	Conformance-Class A
MAC address table	4k

Industrial Ethernet Switch - FL SWITCH 1000-8POE-GT



1102079

<https://www.phoenixcontact.com/us/products/1102079>

Status and diagnostic indicators	LEDs: U _S (voltage supply), Link/Activity and PoE per Ethernet port
Additional functions	Autonegotiation
Security functions	
Basic functions	Store-and-forward switch, 10/100/1000 Mbps, auto negotiation, PoE according to IEEE 802.3at/802.3af, jumbo frames up to 9216 bytes

Electrical properties

Supply

Supply voltage	24 V DC
	48 V DC
Supply voltage range	19 V DC ... 57 V DC
Power supply connection	Via COMBICON, max. conductor cross section 2.5 mm ²
Residual ripple	3.6 V _{PP} (within the permitted voltage range)
Max. current consumption	8.29 A (Maximum, nominal load)
Typical current consumption	170 mA

Connection data

Connection technology

Connection name	Power supply
-----------------	--------------

Power supply

Connection method	Screw connection
Conductor cross section, rigid	0.2 mm ² ... 2.5 mm ²

Ambient conditions

Degree of protection	IP20
Ambient temperature (operation)	-10 °C ... 60 °C
Ambient temperature (storage/transport)	-20 °C ... 85 °C
Altitude	max. 2000 m
Permissible humidity (operation)	5 % ... 95 % (non-condensing)
Permissible humidity (storage/transport)	5 % ... 95 % (non-condensing)
Shock (operation)	30g (EN 60068-2-27)
Vibration (operation)	in acc. with IEC 60068-2-6: 5g, 150 Hz
Air pressure (operation)	57 kPa ... 108 kPa up to 2000 m above mean sea level (up to 4850 m above mean sea level)
Air pressure (storage/transport)	57 kPa ... 108 kPa up to 2000 m above mean sea level (up to 4850 m above mean sea level)

Approval data

Conformity/Approvals

Conformance	CE-compliant
UL, USA / Canada	UL 61010-1, UL 61010-2-201

Industrial Ethernet Switch - FL SWITCH 1000-8POE-GT



1102079

<https://www.phoenixcontact.com/us/products/1102079>

LED signaling

Status display	LEDs: U_S (voltage supply), Link/Activity and PoE per Ethernet port
----------------	---

Industrial Ethernet Switch - FL SWITCH 1000-8POE-GT



1102079

<https://www.phoenixcontact.com/us/products/1102079>

Approvals



UL Listed

Approval ID: FILE E 238705



cUL Listed

Approval ID: FILE E 238705

cULus Listed

Industrial Ethernet Switch - FL SWITCH 1000-8POE-GT



1102079

<https://www.phoenixcontact.com/us/products/1102079>

Classifications

ECLASS

ECLASS-9.0	19170106
ECLASS-10.0.1	19170402
ECLASS-11.0	19170402

ETIM

ETIM 8.0	EC000734
----------	----------

UNSPSC

UNSPSC 21.0	43222600
-------------	----------

Industrial Ethernet Switch - FL SWITCH 1000-8POE-GT



1102079

<https://www.phoenixcontact.com/us/products/1102079>

Accessories

Power supply unit

Power supply unit - QUINT4-PS/1AC/48DC/5 - 2904610

<https://www.phoenixcontact.com/us/products/2904610>



Primary-switched QUINT POWER power supply for DIN rail mounting with free choice of output characteristic curve and SFB (Selective Fuse Breaking) technology, input: 1-phase, output: 48 V DC / 5 A

Power supply unit

Power supply unit - QUINT4-PS/1AC/48DC/10 - 2904611

<https://www.phoenixcontact.com/us/products/2904611>



Primary-switched QUINT POWER power supply for DIN rail mounting with free choice of output characteristic curve and SFB (Selective Fuse Breaking) technology, input: 1-phase, output: 48 V DC / 10 A

Industrial Ethernet Switch - FL SWITCH 1000-8POE-GT



1102079

<https://www.phoenixcontact.com/us/products/1102079>

Power supply unit

Power supply unit - TRIO-PS-2G/1AC/48DC/5 - 2903159

<https://www.phoenixcontact.com/us/products/2903159>



Primary-switched TRIO power supply for DIN rail mounting, input: 1-phase, output: 48 V DC / 5 A, dynamic boost, tool-free fast connection technology for solid and stranded conductors with ferrule

Power supply unit

Power supply unit - TRIO-PS-2G/1AC/48DC/10 - 2903160

<https://www.phoenixcontact.com/us/products/2903160>



Primary-switched TRIO POWER power supply with push-in connection for DIN rail mounting, input: single phase, output: 48 V DC/10 A

Industrial Ethernet Switch - FL SWITCH 1000-8POE-GT



1102079

<https://www.phoenixcontact.com/us/products/1102079>

Power supply unit

Power supply unit - UNO-PS/1AC/24DC/150W - 2904376

<https://www.phoenixcontact.com/us/products/2904376>



Primary-switched UNO power supply for DIN rail mounting, input: 1-phase, output: 24 V DC/150 W

Power supply unit

Power supply unit - UNO-PS/1AC/24DC/240W - 2904372

<https://www.phoenixcontact.com/us/products/2904372>



Please use the following item in new systems: 1096432.
Primary-switched UNO power supply for DIN rail mounting, input: 1-phase, output: 24 V DC / 240 W

Industrial Ethernet Switch - FL SWITCH 1000-8POE-GT



1102079

<https://www.phoenixcontact.com/us/products/1102079>

Ethernet module

Ethernet module - FL PD 1001 T GT - 2891042

<https://www.phoenixcontact.com/us/products/2891042>



Factoryline Power over Ethernet splitter (PD) for separating power and data according to IEEE 802.3af and at, no configuration required, can be used with 10, 100, 1000 Mbps networks, 24 V DC output voltage

Surge protection device

Surge protection device - DT-LAN-CAT.6+ - 2881007

<https://www.phoenixcontact.com/us/products/2881007>



Surge protection in accordance with Class E_A (CAT6_A), for Gigabit Ethernet (up to 10 Gbps), token ring, FDDI/CDDI, ISDN, and DS1. Suitable for Power over Ethernet (PoE++ / 4PPoE) "Mode A" and "Mode B". RJ45 attachment plug with separate grounding cable and ground connection snap-on foot for NS 35 DIN rails.

Industrial Ethernet Switch - FL SWITCH 1000-8POE-GT



1102079

<https://www.phoenixcontact.com/us/products/1102079>

Patch cable

Patch cable - FL CAT5 PATCH 0,5 - 2832263

<https://www.phoenixcontact.com/us/products/2832263>



Patch cable, CAT5, assembled, 0.5 m

Patch cable

Patch cable - FL CAT5 PATCH 1,0 - 2832276

<https://www.phoenixcontact.com/us/products/2832276>



Patch cable, CAT5, assembled, 1 m

Industrial Ethernet Switch - FL SWITCH 1000-8POE-GT



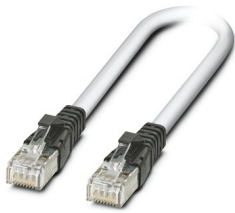
1102079

<https://www.phoenixcontact.com/us/products/1102079>

Patch cable

Patch cable - FL CAT5 PATCH 2,0 - 2832289

<https://www.phoenixcontact.com/us/products/2832289>

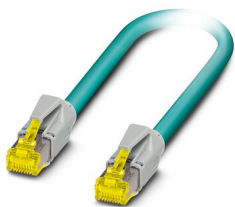


Patch cable, CAT5, assembled, 2 m

Patch cable

Patch cable - NBC-R4AC-R4AC-IE8A/.../... - 1411854

<https://www.phoenixcontact.com/us/products/1411854>



Patch cable, degree of protection: IP20, number of positions: 8, 10 Gbps, CAT6_A, cable outlet: straight, Ethernet

Industrial Ethernet Switch - FL SWITCH 1000-8POE-GT



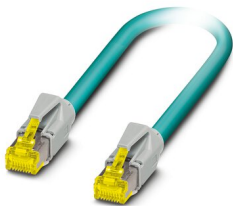
1102079

<https://www.phoenixcontact.com/us/products/1102079>

Patch cable

Patch cable - NBC-R4AC/10G-R4AC/10G-94F/2,0 - 1408360

<https://www.phoenixcontact.com/us/products/1408360>

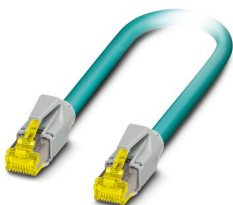


Patch cable, CAT6_A, 4-pair, shielded, connection not crossed (line), assembled at both ends with RJ45/IP20 connectors, outer sheath material: PUR, length: 2.0 m

Patch cable

Patch cable - NBC-R4AC/10G-R4AC/10G-94F/3,0 - 1408365

<https://www.phoenixcontact.com/us/products/1408365>



Patch cable, CAT6_A, 4-pair, shielded, connection not crossed (line), assembled at both ends with RJ45/IP20 connectors, outer sheath material: PUR, length: 3.0 m

Industrial Ethernet Switch - FL SWITCH 1000-8POE-GT



1102079

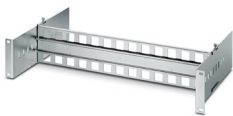
<https://www.phoenixcontact.com/us/products/1102079>

DIN rail adapter

DIN rail adapter - FL DIN RA - 2891053

<https://www.phoenixcontact.com/us/products/2891053>

The FL DIN RA is installed in a standard, 19-inch rack (EIA-310-D, IEC 60297-3-100) to allow DIN rail mounted equipment to be rack mounted.

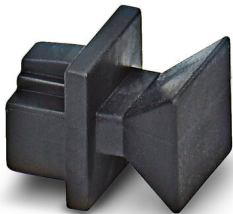


Dust protection

Dust protection - FL RJ45 PROTECT CAP - 2832991

<https://www.phoenixcontact.com/us/products/2832991>

Dust protection caps for RJ45 socket



Industrial Ethernet Switch - FL SWITCH 1000-8POE-GT



1102079

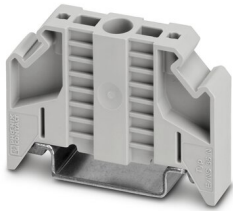
<https://www.phoenixcontact.com/us/products/1102079>

End clamp

End clamp - E/NS 35 N - 0800886

<https://www.phoenixcontact.com/us/products/0800886>

End clamp, width: 9.5 mm, color: gray



Phoenix Contact 2022 © - all rights reserved

<https://www.phoenixcontact.com>

Phoenix Contact USA
586 Fulling Mill Road
Middletown, PA 17057, United States
(+717) 944-1300
info@phoenixcon.com