

# 13" CIRCULAR LED KITS

3000 AND 4000 LUMEN OPTION

# FUTURE FIT

LED KITS

## DESCRIPTION

UL 1598C Classified LED retrofit kit. Includes the following components:

- (1) LED Driver • (1) LED Module • Metal Pan • Mounting Accessories (Threaded Rod, Mounting Hardware, and Wiring Hardware)



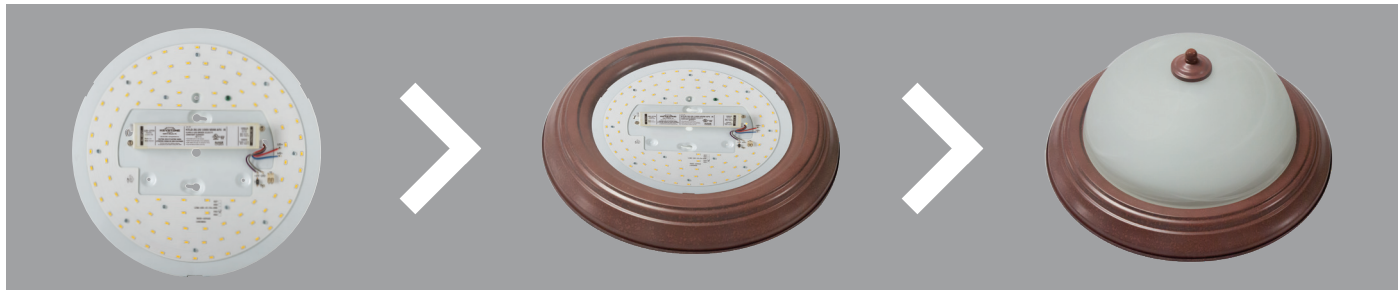
RoHS  
Compliant

10YEAR  
WARRANTY

## APPLICATION

Upgrade circular surface-mount, fluorescent-style luminaires to an LED solution. Suitable for after-market or OEM installation. (OEM must have UL LED Luminaire General Coverage file.)

## TYPICAL INSTALLATION APPLICATION



## SYSTEM FEATURES

### Module Features

- For Use in Class 2 Lighting Systems
- Can Be Switched to Either 3000 Lumen or 4000 Lumen Output Via Toggle Switch
- Highly Reflective White Soldermask
- Low Profile WAGO Push Connectors
- UL Recognized Components
- Single-Sided CEM3 Substrate
- 3-Step MacAdam Color Binning
- LM80 Tested LEDs by Samsung
- Beam Angle: 120°
- Reported Life Expectancy: L70 > 54,000 hours at Tc <85°C
- Maximum Board Temperature at Tc Point: 85°C

### Driver Features

- 120-277V Input, High Power Factor, 0-10V Dimming
- High Power Factor
- UL 8750 Recognized Component LED Power Unit
- Meets FCC Part 15 Class B (Consumer) Limit for EMI
- Over Current, Short Circuit, and Open Circuit Protection
- Class 2 Output
- Type 1 Outdoor, Suitable for Dry and Damp Locations
- Up to 194°F/90°C Maximum Case Temperature
- THD: <20%



# 13" CIRCULAR LED KITS

## 3000 AND 4000 LUMEN OPTION

### PERFORMANCE SPECIFICATIONS

#### 13", Set at 3000 Lumen Setting

Dimming Type: 0-10V

**KIT CONTENTS:**

Driver: (1) KTLD-36-UV-1000-VDIM-AF6

Module: (1) KTLM-1440-C3-8xx-120B

Mounting Hardware and Accessories

Color Temp	Input Voltage	LED Retrofit Kit Catalog Number	No. of Modules	Total System Drive Current	Total System Lumens	Total Module Power	Module Efficacy	Driver Efficiency	Total System Power	Total System Efficacy
3000K	120-277V	KT-RKIT-CP-13-4000-830-VDIM	1	760mA	2920	24W	122 lm/W	85%	27W	108 lm/W
3500K	120-277V	KT-RKIT-CP-13-4000-835-VDIM	1	760mA	3000	24W	125 lm/W	85%	27W	111 lm/W
4000K	120-277V	KT-RKIT-CP-13-4000-840-VDIM	1	760mA	3100	24W	129 lm/W	85%	27W	115 lm/W
5000K	120-277V	KT-RKIT-CP-13-4000-850-VDIM	1	760mA	3220	24W	133 lm/W	85%	27W	119 lm/W

#### 13", Set at 4000 Lumen Setting

Dimming Type: 0-10V

**KIT CONTENTS:**

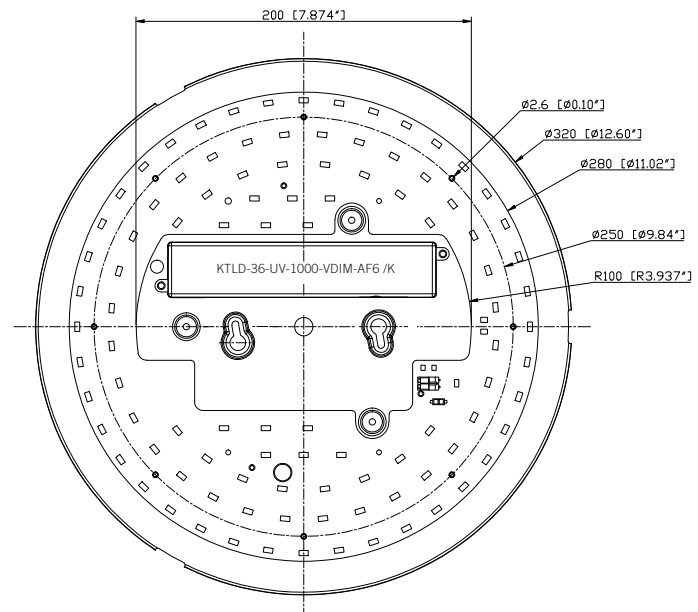
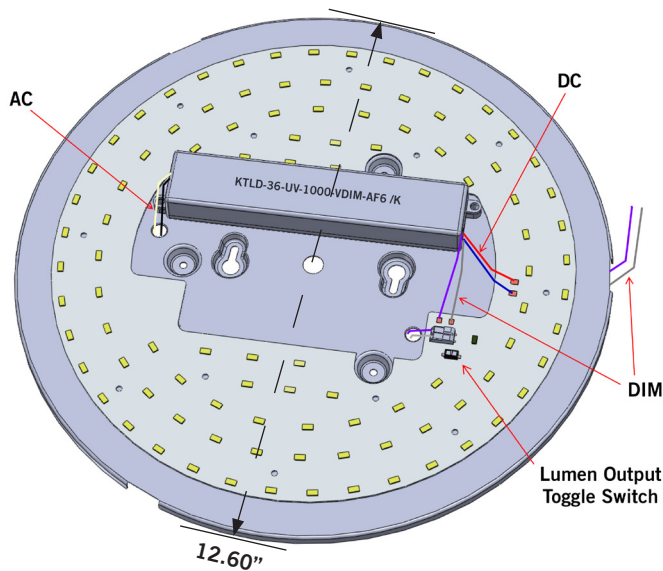
Driver: (1) KTLD-36-UV-1000-VDIM-AF6

Module: (1) KTLM-1440-C3-8xx-120B

Mounting Hardware and Accessories

Color Temp	Input Voltage	LED Retrofit Kit Catalog Number	No. of Modules	Total System Drive Current	Total System Lumens	Total Module Power	Module Efficacy	Driver Efficiency	Total System Power	Total System Efficacy
3000K	120-277V	KT-RKIT-CP-13-4000-830-VDIM	1	1000mA	3800	31W	123 lm/W	85%	36W	106 lm/W
3500K	120-277V	KT-RKIT-CP-13-4000-835-VDIM	1	1000mA	3850	31W	124 lm/W	85%	36W	108 lm/W
4000K	120-277V	KT-RKIT-CP-13-4000-840-VDIM	1	1000mA	4000	31W	129 lm/W	85%	36W	112 lm/W
5000K	120-277V	KT-RKIT-CP-13-4000-850-VDIM	1	1000mA	4150	31W	134 lm/W	85%	36W	116 lm/W

### PHYSICAL SPECIFICATIONS





# 13" CIRCULAR LED KITS

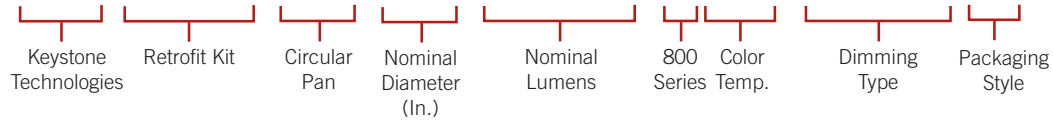
3000 AND 4000 LUMEN OPTION

## ORDERING INFORMATION

ORDER CODE	PACKAGING STYLE	PACK QTY.	ITEM STATUS
KT-RKIT-CP-13-4000-8xx-VDIM-BP	Bulk Package	20	Quick Ship
KT-RKIT-CP-13-4000-8xx-VDIM-IP	Individually Package	1	Quick Ship

## CATALOG NUMBER BREAKDOWN

# KT-RKIT-CP-13-4000-840-VDIM-IP



# LIGHT MADE EASY™