

H35

Stainless Steel, Welded Seal, NTEP Certified 1:5,000 Class III Multiple Cell, IP67



APPROVALS



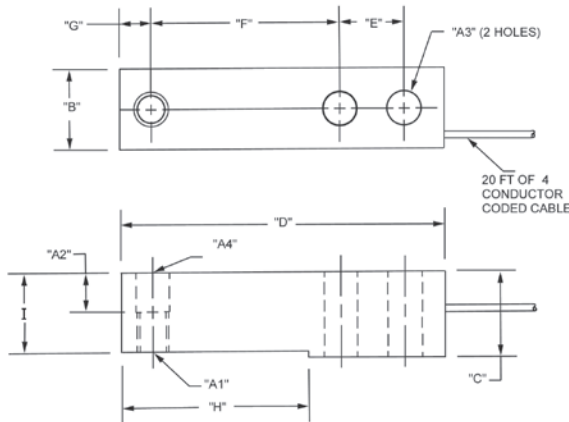
Dimensions

Picture is a representation of actual product

Rated Capacity	A1	A2	A3	A4	B	C	D	E	F	G	H	I
500-5,000	1/2-20 UNF-2B	0.62	0.53	0.53	1.21	1.19	5.12	1.00	3.00	0.50	2.85	1.12

Order Information

Load Rating	Part #	Est. Weight	Price
500 lb	84818	3 lb	Consult
1,000 lb	64876	3 lb	Consult
2,500 lb	64877	3 lb	Consult
4,000 lb	64878	3 lb	Consult
5,000 lb	64879	3 lb	Consult



Interchangeable Products

RICE LAKE WEIGHING SYSTEMS

RLH35 page 144

METTLER TOLEDO®

500 lb-8 ft cable..... TB601019-008

1,000 lb-20 ft cable TB601016-020

2,500 lb-8 ft cable..... TB601016-008

4,000 lb-20 ft cable.....TB601017-020

5,000 lb-8 ft cable TB601018-008

METTLER TOLEDO

500 lb.....TB600830-020

METTLER TOLEDO

1,000 lb.....TB600831-020

METTLER TOLEDO

2,000 lb TB600832-020

METTLER TOLEDO

2,500 lb.....TB600833-020

Specifications

Full Scale Output:

3.0 mV/V

Output Resistance:

350 (± 3) ohms

Input Resistance:

385 ohms, nominal

Material/Finish:

Stainless steel

Temperature:

Compensated range

14°F to 104°F (-10°C to 40°C)

Operating range

0°F to 150°F (-18°C to 65°C)

Seal Type:

Welded-seal, IP67

Safe Overload:

150% full scale

Safe Sideload:

100% full scale

Rated Excitation:

5- 10 V DC (15 V maximum)

Combined Error:

0.02% full scale

Insulation Resistance:

5,000 megohms

Cable Length:

20 ft

Cable Diameter:

0.190 in polyurethane jacket

Cable Color Code:

Green +Excitation

Black -Excitation

White +Signal

Red -Signal

Yellow Shield

Warranty:

One-year limited warranty

Approvals:

FM

NTEP