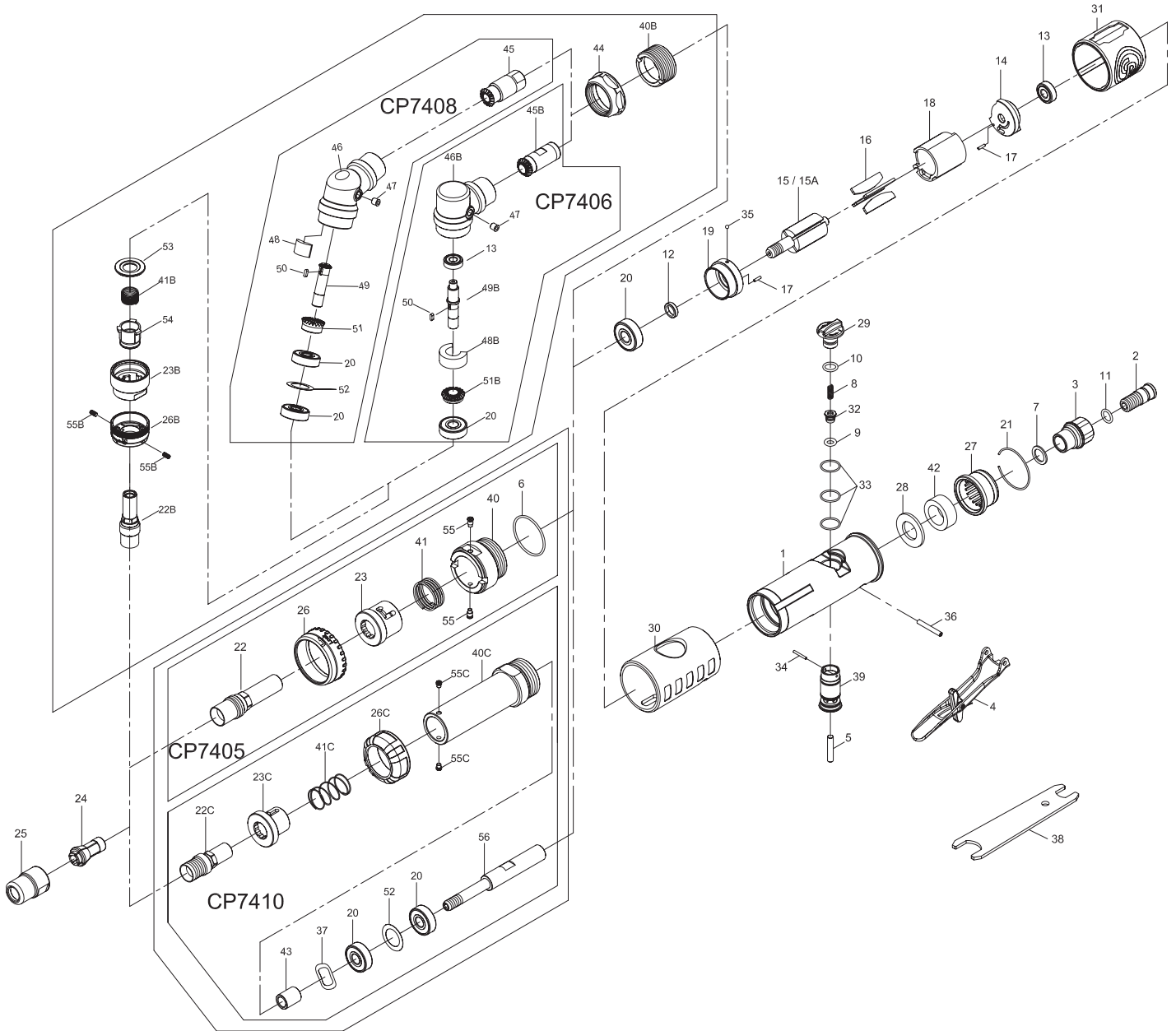




**Chicago
Pneumatic**

CP7405/CP7406/CP7408/CP7410

**Model C
Die Grinder**



Item	Glue / grease		Tightening torque / Q'ty	
1/2	Loctite 243	Q	7.8-9.8 N.m	5.8-7.2 ft.lbs
1/40 & 40B & 40C	Loctite 243	Q	29.4-34.3 N.m	21.7-25.3 ft.lbs
15A/45 & 45B & 56	N/A	Q	11.8-14.7 N.m	8.7-10.9 ft.lbs
15/22	Loctite 243	Q	5.9-7.8 N.m	4.3-5.8 ft.lbs
22B/49 & 49B	1058H	Q	5.9-7.8 N.m	4.3-5.8 ft.lbs
22C/56	Loctite 243	Q	5.9-7.8 N.m	4.3-5.8 ft.lbs
23B/46 & 46B	Loctite 243	Q	14.7-19.6 N.m	10.9-14.5 ft.lbs
40B/44	Loctite 243	Q	24.5-29.4 N.m	18.1-21.7 ft.lbs
44/46 & 46B	Loctite 243	Q	24.5-29.4 N.m	18.1-21.7 ft.lbs
40/55	Loctite 222	Q	0.59 Nm	0.43 ft.lbs
40C/55C	Loctite 222	Q	0.59 Nm	0.43 ft.lbs



**Chicago
Pneumatic**

CP7405/CP7406/CP7408/CP7410

**Model C
Die Grinder**

Item No.	Part No.	Description	Q'ty
15	8940176522	Rotor CP7405	1
15A	8940176540	Rotor CP7406 CP7408 CP7410	1
16	8940176523	Blades(Set Of 4)	1
18	8940176524	Cylinder	1
24	2050484292	Collet 3mm	1
24	2050484293	Collet 1/4"	1
24	C139289	Collet 6mm	1
25	8940176745	Collet Nut (set of 5)	1
38	2050484423	Spanner 11&17MM	1
A	8940176583	Housing Kit	
1		Housing	1
30		Grip	1
31		Front Sleeve	1
B	8940176595	Inlet Kit	
2		Fixed Shaft	1
3		Air Inlet 1/4" NPT	1
7		Washer	1
21		Retaining Ring	1
27		Deflector	1
28		Damping Material	1
42		Damping Material	1
C	8940176688	Lever Kit	
4		Throttle lever assembly	1
36		Spring pin 22Lx3	1
D	8940176689	Regulator Kit	
5		Valve Shaft	1
8		Spring W0.6XOD3.8X12Lx8N	1
9		O-Ring 3.8X1.9	1
10		O-Ring 6X1.5	1
29		Regulator	1
32		Throttle Valve	1
33		O-Ring 10.5X1	3
34		Spring Pin 12Lx1.5	1
39		Valve	1
E	8940168870	Rear End Plate Kit	
13		Bearing 696ZZ	1
14		Rear End Plate	1
17		Spring Pin 6Lx1.5	1
F	8940176691	Front End Plate Kit	
12		Rotor Spacer	1
17		Spring Pin 6Lx1.5	1
19		Front End Plate	1
20		Bearing 608ZZ	1
35		Steel Ball 3/32"	1
G	8940176692	Front coupling kit CP7406 & CP7408	
40B		Front coupling	1
44		Front cap	1
G1	8940176693	Front Coupling Kit CP7405	
6		O-Ring 26.5X1.4	1
26		Front Cap	1
40		Front Coupling	1
55		Screw(Set Of 2)	1
G2	8940176694	Front Coupling Kit CP7410	
26C		Front Cap	1
40C	8940176564	Front Coupling Extended	1
55C		Screw(Set Of 2)	1

Item No.	Part No.	Description	Q'ty
H	8940176695	Head Kit CP7408	
46		Head	1
47		Oil Cap	1
48		Oil Felt	1
H1	8940176696	Head Kit CP7406	
46B		Head	1
47		Oil Cap	1
48B		Oil Felt	1
I	8940176697	Bearing Kit CP7408	
20		Bearing 608ZZ	2
52		Washer	1
J	8940176741	Spindle Kit CP7408	
49	8940176555	Spindle	1
50		Key	1
K	8940176742	Bevel Gear Kit CP7408	
45		Bevel Gear	1
51	2050484513	Bevel Gear	1
I1	8940176698	Bearing Kit CP7406	
13		Bearing 696ZZ	1
20		Bearing 608ZZ	1
J1	8940176743	Spindle CP7406	
49B	8940176546	Spindle	1
50		Key	1
K1	8940176744	Bevel Gear kit CP7406	
45B		Bevel Gear	1
51B	2050484433	Bevel Gear	1
L	8940176699	Spindle Lock Kit CP7406 & CP7408	
22B	8940176541	Collet Holder	1
23B		Clamp Nut	1
26B		Front Cap	1
41B		Spring W0.9XOD13.5X19Lx5N	1
53		Washer	1
54		Locking Seat	1
55B		Screw M3X6L	2
L1	8940176700	Spindle Lock Kit CP7405	
22	8940176526	Collet Holder	1
23		Lock Seat	1
26		Front Cap	1
41		Spring W1.2XOD21.7X24.4Lx4.5N	1
55		Screw(Set Of 2)	1
L2	8940176701	Spindle Lock Kit CP7410	
22C	8940176560	Collet Holder	1
23C		Locking Seat	1
26C		Front Cap	1
41C		Spring W1XOD17X18.7Lx4N	1
55C		Screw (Set of 2)	1
M	8940176702	Extension Bar Kit	
20		Bearing 608ZZ	2
37		Bearing Wave Washer BWW608	1
43		Bushing	1
52		Washer	1
56		Extension Bar	1
N	8940176703	Tune Up Kit (Includes 9, 10, 11,12, 16, 17 (x2), 28, 33(x3), 35, 36, 42, 50)	

	8950900061	Warning Label
	6159948750	Safety Instructions

Recommended Accessories		
	Air motor lubrication oil	Rear exhaust hose: 2050516493
	8940176598 CPA1015 MOTOR OIL 125 mL	
	8940176597 CPA1014 MOTOR OIL 1L	
8940176599 CPA1016 MOTOR OIL 5L		

Spare parts without part number are not sold separately
Contact us at www.cp.com

19/01/2021
8940175731 Rev. : 02