

# BMP®51 Label Printer

BradyID.com/s36



Learn more at [BradyID.com/bmp51](http://BradyID.com/bmp51)

### Your complete printing solution:

BMP51 cartridges with label and print ribbon ..... page 116

## BMP®51 LABEL PRINTER

### Made to get the job done

Print continuous and die-cut labels up to 1.5 in. wide and with more material options.

- Ribbon and label materials in one easy-to-load cartridge
- Prints 1.18 in. per second
- 200+ label parts in 14 materials
- 1.5 in. continuous output and 1 in. sleeves available
- Material recognition and automatic label formatting
- Large, graphical display with backlight
- Durable built-in cutter with label retention
- Robust software for advanced label design
- Optional Wi-Fi card for wireless printing via a network
- Tough, durable label materials that won't fade, smear or fall off

Printer specifications	
Print speed	1.18 in. / sec. (w/ AC adapter)
Print and color capabilities	Thermal Transfer / Monochrome
Print resolution	300 dpi
PC compatibility or standalone	Standalone and PC connect
Connectivity options	USB / Wi-Fi (field-installable), LAN
Software compatibility	Brady Workstation Apps, Brady Mobile Apps w/ Wi-Fi card, LabelMark™ Software
Power supply options	Li-Ion rechargeable battery, 8 AA batteries, AC adapter
Standard warranty	2 years
Dimensions	6 in. W x 10.3 in. H x 3.6 in. D
Weight	2.6 lbs. (w/o tape, batteries)
Print features	
Screen size	13 lines x 36 characters
Backlit screen	Yes
Keyboard style	QWERTY
Max print width	1.5 in.
Font types available	(2) Brady Alpine and Brady Fixed Width
Font sizes (pts)	Custom, auto, 4, 6, 7, 9, 10, 13, 14, 16, 20, 26, 28, 32, 38, 40, 42, 45, 51, 55, 60, 65, 70, 76, 102
Multi-line label capabilities	32
Label print rotation	Yes
Data serialization	Yes, multiple and linked
Barcode capabilities and types	Code 39, Code 128 and more using Brady Workstation
Memory capacity	25,000 characters up to 48 MB
Data transfer from PC	Yes
Print preview	Yes
Symbols available	450
Label supplies	
Label / ribbon supply	Cartridge w/ included ribbon
Material formats supported	Continuous and die-cut labels
Media width	0.25 in. to 1.5 in.
Types of materials	Outdoor vinyl, nylon cloth wire ID, heat-shrink wire ID, self-laminating wire ID, removable cloth wire ID, datacomm cable tags, standard polyester, aggressive adhesive polyester, metallized polyester, non-adhesive tag, outdoor reflective
Quantity of label parts available	200+ label parts
Cartridge series	M-series

### BMP51 label printer and accessories

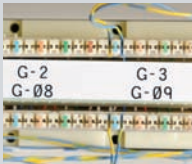
Catalog #	Description
BMP51	BMP51 Printer*, Rechargeable Li-Ion Battery Pack and AC Adaptor/Battery Charger
BMP51-KIT-AC	BMP51 Printer* with AC Adaptor/Battery Charger
Accessories	
M50-MAGNET	BMP50 Series Magnet Accessory
BMP-UBP	Lithium Ion Rechargeable Battery Pack
BMP-UBP-AC	Lithium Ion Rechargeable Battery Pack with AC Adaptor/Battery Charger
NET-LAN	Brady Network Card - Ethernet only
NET-Wi-Fi	Brady Network Card - Wi-Fi only
M50-HC	BMP50 Series Hard Carrying Case
BMP-SC-1	BMP50 Series Soft Carrying Case
M-AC-143110	BMP50 Series AC Adaptor/Battery Charger
M-USB-103788	BMP50 Series USB Cable
M50-BAT-TRAY	BMP50 Series Spare Battery Tray

\* Printer ships with hard carrying case, battery tray for AA batteries, USB cable, drivers CD, product CD, quick start guide and one MC-1500-595-WT-BK label cartridge. Network card sold separately.

Patents applied for: 6,732,619 and 7,070,347 on printer. 6,929,415 on the PermaSleeve® wire marking cartridges. 8,542,155 on wireless and ethernet cards.



## Get the job done faster, easier and with confidence



Voice and data communications



PermaSleeve® wire markers



Product identification



Panel component identification



Laboratory identification



General ID and much more

Portable Printers

BMP51