

253 Series

**TOP
SELLER**

The 253 Series offers superb flexibility, reliability, and value. A general purpose, economical drive rated to 2HP, the 253 Series is our top-selling enclosed drive. Where most other drives require options to include soft start adjustment, AC line fuse protection and additional heat sink to handle higher HP motors, these are all included in every 253G model as standard features. Reliability is enhanced from the use of a rugged packaged power bridge. Chassis or NEMA 4/12 enclosure styles are available. Many options further extend the 253's capabilities.

Typical applications include conveyors and material handling, process pumps and machine tools.



253G-200C

 **RoHS**



253G-200E-29

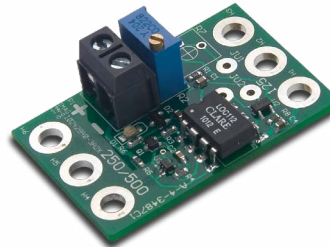
**MADE IN THE
USA**

253 Series Features + Specifications

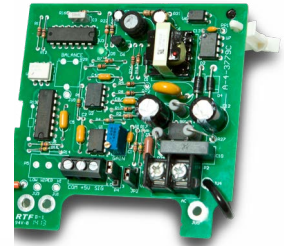
- Dual Voltage 120/240 VAC, 50/60Hz
- Full HP rated - no auxiliary heat sink required
- $\pm 10\%$ rated line voltage
- Adjustable horsepower settings
- Barrier terminal strip
- Full wave bridge supply
- 1% speed regulation
- Adjustable Minimum speed (0–30% of base)
- Adjustable Maximum speed (66–100% of base)
- Adjustable IR Compensation
- Adjustable Current Limit
- Adjustable Linear Acceleration
- -10° to $+45^{\circ}\text{C}$ ambient temperature
- Line voltage compensation
- 5K ohm speed potentiometer kit included
- 50:1 speed range
- Overload capacity: 150% for one minute
- Transient voltage protection
- Voltage follower mode - isolated signal (0–12 VDC)
- Inhibit circuit—permits low power start & stop

Model	Width	Length	Depth	Weight
251/253 chassis	5.53 in [14.1 cm]	7.00 in [17.78 cm]	1.63 in [4.14 cm]	14.25 oz [404 gm]
251/253 enclosed	5.53 in [14.1 cm]	7.25 in [18.42 cm]	2.75 in [6.98 cm]	17.50 oz [486 gm]

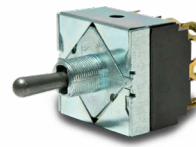
Options:



-5 option board



-55 option board



-29B

Base Model						Options							
Model	Supply Voltage	Motor Voltage	Current	HP	Body	-4X	-5	-7	-17B	-29	-34A	-55	-56
251G-12C	120 VAC	90 VDC	1.2 ADC	1/50-1/8	C	N/A	✓	✓	F	✓	N/A	✓	✓
	240 VAC	180 VDC		1/25-1/4		F	✓	✓	✓				
253G-200C	120 VAC	90 VDC	10 ADC	1/8-1	C	N/A	✓	✓	F	✓	N/A	✓	✓
	240 VAC	180 VDC		1/4-2		F	✓	✓	✓				
251G-12E	120 VAC	90 VDC	1.2 ADC	1/50-1/8	E	F	N/A	✓	F	F	F	N/A	F
	240 VAC	180 VDC		1/25-1/4		F	✓	✓	✓	✓			
253G-200E	120 VAC	90 VDC	10 ADC	1/8-1	E	F	N/A	✓	F	F	F	N/A	F
	240 VAC	180 VDC		1/4-2		F	✓	✓	✓	✓			

C – open chassis

E – NEMA 4 enclosed

✓ - Option is available

S - Standard Feature

N/A – Option Not available

F – Option is available as Factory Installed only

Option Description:

- 4X: NEMA 4X wash down rated - enclosed models only
- 5: Isolated 4-20mA signal follower input - loop power NOT provided
- 7: Same as -5 option, with provision to add manual speed pot for Auto/Manual operation
- 17B: Adjustable Acceleration rate = Deceleration rate
- 29: 4PDT center block (no pass) switch motor reversing. Cuts off supply power while changing motor direction
- 34A: Torque Control (enclosed models only) - changes speed pot to Torque adjustment
- 55: Isolated 0-5 to 0-250VDC signal follower input
- 56: Same as -55H, with provision to add manual speed pot for Auto/Manual operation