

# AHV SERIES

## THREE PHASE HIGH PERFORMANCE EMI FILTER

### Single stage delta configuration

#### INTRODUCTION

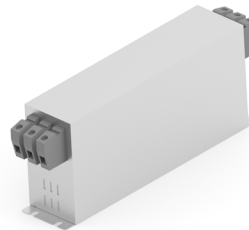
Bookshelf design for motor drive applications requiring minimum space and convenient installation with superior performance at significant interference levels

#### APPLICATION

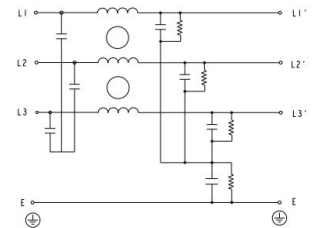
- IT power distribution network
- Three phase drives
- Renewable energy systems
- Process automation equipments
- Energy conversion devices

#### FEATURES

- Superior performance
- Compact
- Low leakage current
- Book shelf mounting



STANDARD



TYPICAL CIRCUIT DIAGRAM

#### APPROVALS AND COMPLIANCE

- UL recognized as per UL 60939-3 and CSA22.2 No 8



## Specifications

| Electrical Characteristics  |                                      |
|-----------------------------|--------------------------------------|
| Agency Rated Voltage        | Line to Line: 760/750VAC             |
| Current Ratings             | 7A to 180A @ 40°C                    |
| Operating Frequency         | 50/60Hz                              |
| High Potential Test Voltage | Line to Ground: 3535VDC for 1 minute |
|                             | Line to Line: 3268VDC for 1 minute   |
| Overload Capability         | 135% Rated current for 15 minutes    |

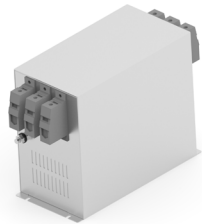
## AHV Series

### Single Stage Delta Configuration

| Functional Characteristics              |                          |
|---|--------------------------|
| Operating Temperature Range             | -25°C to +85°C           |
| Climatic Category                       | 25/85/21                 |
| Termination (Depends on Current Rating) | Quick Connect 7A to 180A |
| Flammability Corresponding to           | UL 94 V-0                |

| Reference Standards     |                              |
|-------------------------|------------------------------|
| Design Corresponding to | UL 60939-3 and CSA 22.2 No 8 |

### Selection Table - Standard Version



| TE Ordering Number | Catalog Number | Rated Current @40°C | Rated Voltage @40°C | Leakage Current (mA) | Weight (Kgs) | Termination Type |
|--------------------|----------------|---------------------|---------------------|----------------------|--------------|------------------|
| 2405077-1          | 7 AHV S BS     | 7A                  | 760                 | 2.5mA                | 2            | 1                |
| 2405077-2          | 10 AHV S BS    | 10A                 | 760                 | 2.5mA                | 2            | 1                |
| 2405077-3          | 16 AHV S BS    | 16A                 | 760                 | 2.5mA                | 3            | 1                |
| 2405077-4          | 20 AHV S BS    | 20A                 | 760                 | 2.5mA                | 3            | 1                |
| 2405077-5          | 25 AHV S BS    | 25A                 | 760                 | 2.5mA                | 3            | 1                |
| 2405077-6          | 30 AHV S BS    | 30A                 | 760                 | 2.5mA                | 4            | 1                |
| 2405077-7          | 40 AHV S BS    | 40A                 | 760                 | 2.5mA                | 4            | 1                |
| 2405077-8          | 50 AHV S BS    | 50A                 | 760                 | 2.5mA                | 4            | 1                |
| 2405077-9          | 63 AHV S BS    | 63A                 | 760                 | 3mA                  | 5            | 1                |
| 1-2405077-0        | 75 AHV S BS    | 75A                 | 760                 | 3mA                  | 5            | 1                |
| 1-2405077-1        | 80 AHV S BS    | 80A                 | 760                 | 3mA                  | 5            | 1                |
| 1-2405077-2        | 90 AHV S BS    | 90A                 | 760                 | 3mA                  | 6            | 2                |
| 1-2405077-3        | 100 AHV S BS   | 100A                | 760                 | 3mA                  | 6            | 2                |
| 1-2405077-4        | 125 AHV S BS   | 125A                | 760                 | 3mA                  | 7            | 3                |
| 1-2405077-5        | 150 AHV S BS   | 150A                | 760                 | 3mA                  | 8            | 3                |
| 1-2405077-6        | 180 AHV S BS   | 180A                | 760                 | 3mA                  | 12           | 4                |

# AHV Series

Single Stage Delta Configuration

## Termination Type: Connectors Cross Section

|  | 1        | 2       | 3       | 4       |
|---|----------|---------|---------|---------|
| Range; Flexible (mm <sup>2</sup> )  | 0.5 - 16 | 10 - 25 | 16 - 50 | 35 - 95 |

## Insertion Loss (Typical) - Measured in Closed 50Ω System

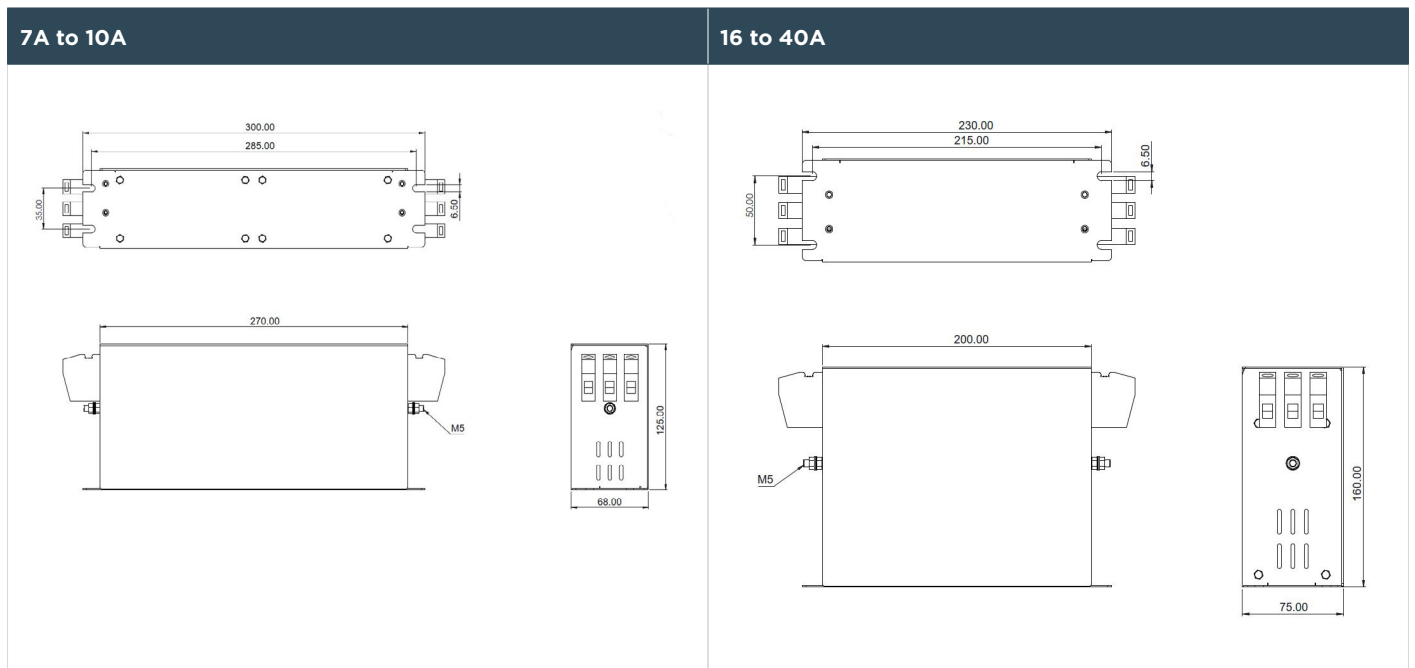
|                |      | Common Mode 50Ω/50Ω |      |      |      |      |      |      |      |      |
|----------------|------|---------------------|------|------|------|------|------|------|------|------|
|                |      | Frequency in MHz    |      |      |      |      |      |      |      |      |
|                |      | 0.01                | 0.05 | 0.15 | 0.5  | 1    | 3    | 5    | 10   | 30   |
| Current Rating | 7A   | 10.3                | 24.9 | 36.3 | 46.9 | 45.9 | 49.1 | 58.5 | 38.5 | 16.6 |
|                | 10A  | 8.0                 | 22.0 | 32.0 | 40.0 | 39.0 | 42.0 | 52.0 | 30.0 | 10.0 |
|                | 16A  | 6.0                 | 20.0 | 30.0 | 35.0 | 37.0 | 39.0 | 40.0 | 25.0 | 15.0 |
|                | 20A  | 4.0                 | 18.0 | 26.0 | 35.0 | 34.0 | 37.0 | 41.0 | 23.0 | 14.0 |
|                | 25A  | 3.9                 | 17.5 | 28.8 | 34.6 | 34.9 | 38.2 | 46.4 | 30.2 | 16.1 |
|                | 30A  | 2.5                 | 16.0 | 26.0 | 31.0 | 32.0 | 34.0 | 40.0 | 30.2 | 15.0 |
|                | 40A  | 1.0                 | 10.0 | 20.0 | 29.0 | 30.0 | 37.0 | 52.0 | 32.0 | 17.0 |
|                | 50A  | 0.0                 | 7.2  | 16.8 | 27.9 | 32.6 | 42.1 | 55.9 | 37.1 | 20.9 |
|                | 63A  | 0.3                 | 7.2  | 14.0 | 25.0 | 30.0 | 38.0 | 49.0 | 35.0 | 19.0 |
|                | 75A  | 0.1                 | 3.6  | 12.9 | 23.7 | 25.9 | 35.1 | 48.4 | 33.7 | 22.1 |
|                | 80A  | 0.2                 | 2.5  | 8.0  | 10.0 | 21.0 | 31.0 | 42.0 | 25.0 | 13.0 |
|                | 90A  | 0.1                 | 1.0  | 5.0  | 7.0  | 18.0 | 24.0 | 34.0 | 22.0 | 15.0 |
|                | 100A | 0.1                 | 0.5  | 2.8  | 8.1  | 13.2 | 25.1 | 44.5 | 24.3 | 14.6 |
|                | 125A | 0.1                 | 0.5  | 3.0  | 6.0  | 14.0 | 24.0 | 40.0 | 25.0 | 12.0 |
| 150A           | 0.1  | 0.3                 | 4.0  | 7.0  | 12.0 | 26.0 | 38.0 | 20.0 | 10.0 |      |
| 180A           | 0.1  | 0.5                 | 4.6  | 15.5 | 18.5 | 30.4 | 43.1 | 23.4 | 13.9 |      |

# AHV Series

Single Stage Delta Configuration

|                |      | Differential Mode 50Ω/50Ω |      |      |      |      |      |      |      |      |
|----------------|------|---------------------------|------|------|------|------|------|------|------|------|
|                |      | Frequency in MHz          |      |      |      |      |      |      |      |      |
|                |      | 0.01                      | 0.05 | 0.15 | 0.5  | 1    | 3    | 5    | 10   | 30   |
| Current Rating | 7A   | 13.9                      | 33.2 | 66.5 | 68.4 | 73.2 | 88.8 | 78.1 | 77.9 | 46.1 |
|                | 10A  | 10.0                      | 25.0 | 58.0 | 65.0 | 66.0 | 79.0 | 70.0 | 65.0 | 36.0 |
|                | 16A  | 7.0                       | 20.0 | 50.0 | 67.0 | 61.0 | 72.0 | 65.0 | 61.0 | 25.0 |
|                | 20A  | 11.0                      | 19.0 | 48.0 | 70.0 | 63.0 | 65.0 | 60.0 | 58.0 | 22.0 |
|                | 25A  | 14.7                      | 21.5 | 54.7 | 77.5 | 65.5 | 56.3 | 54.3 | 55.0 | 18.2 |
|                | 30A  | 13.0                      | 25.0 | 40.0 | 65.0 | 67.0 | 46.0 | 50.0 | 48.0 | 24.0 |
|                | 40A  | 10.0                      | 24.0 | 34.0 | 65.0 | 68.0 | 43.0 | 50.0 | 46.0 | 27.0 |
|                | 50A  | 14.8                      | 26.6 | 38.8 | 64.3 | 58.2 | 49.6 | 47.4 | 44.6 | 36.0 |
|                | 63A  | 16.0                      | 29.0 | 42.0 | 55.0 | 50.0 | 41.0 | 45.0 | 40.0 | 30.0 |
|                | 75A  | 23.7                      | 34.0 | 71.8 | 64.0 | 55.1 | 46.3 | 43.8 | 41.1 | 32.3 |
|                | 80A  | 18.0                      | 24.0 | 64.0 | 42.0 | 38.0 | 40.0 | 31.0 | 26.0 | 18.0 |
|                | 90A  | 19.0                      | 26.0 | 60.0 | 47.0 | 40.0 | 35.0 | 32.0 | 29.0 | 18.0 |
|                | 100A | 25.7                      | 39.1 | 62.1 | 48.1 | 41.3 | 33.4 | 30.9 | 28.3 | 21.9 |
|                | 125A | 18.0                      | 30.0 | 68.0 | 37.0 | 44.0 | 35.0 | 25.0 | 22.0 | 16.0 |
|                | 150A | 20.0                      | 28.0 | 60.0 | 40.0 | 33.0 | 29.0 | 21.0 | 18.0 | 14.0 |
| 180A           | 25.5 | 38.4                      | 64.0 | 47.0 | 39.4 | 31.2 | 28.7 | 25.9 | 17.6 |      |

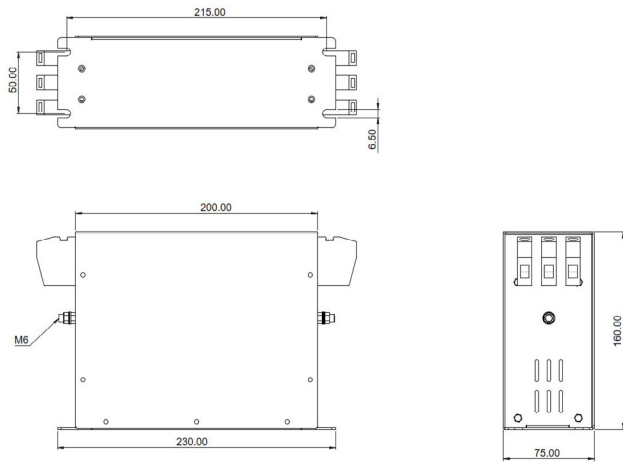
## Mechanical Diagram



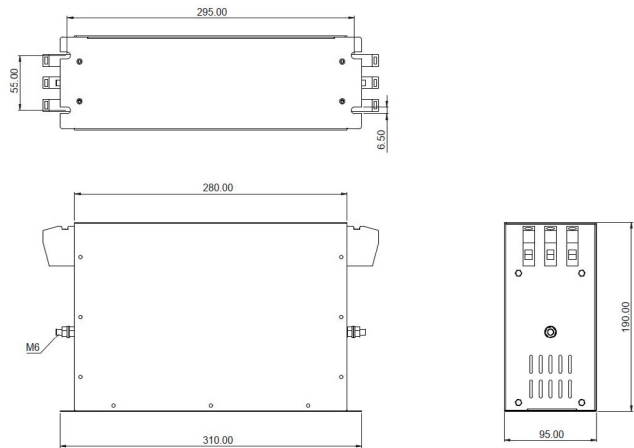
# AHV Series

## Single Stage Delta Configuration

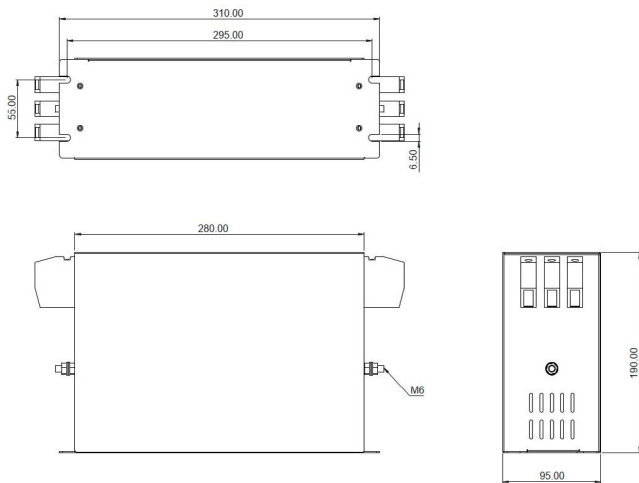
### 50A



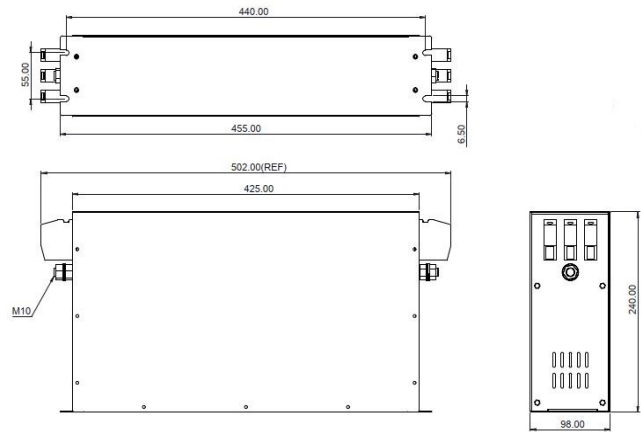
### 63A to 80A



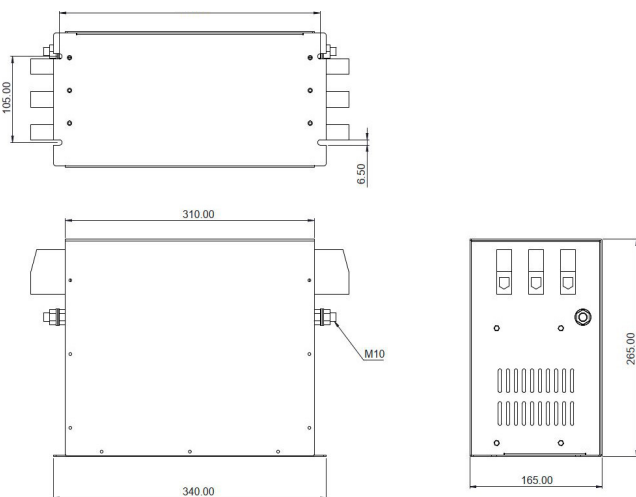
### 90A



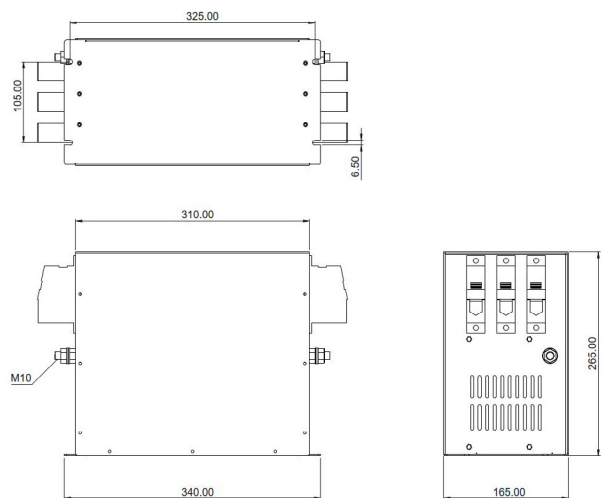
### 100A



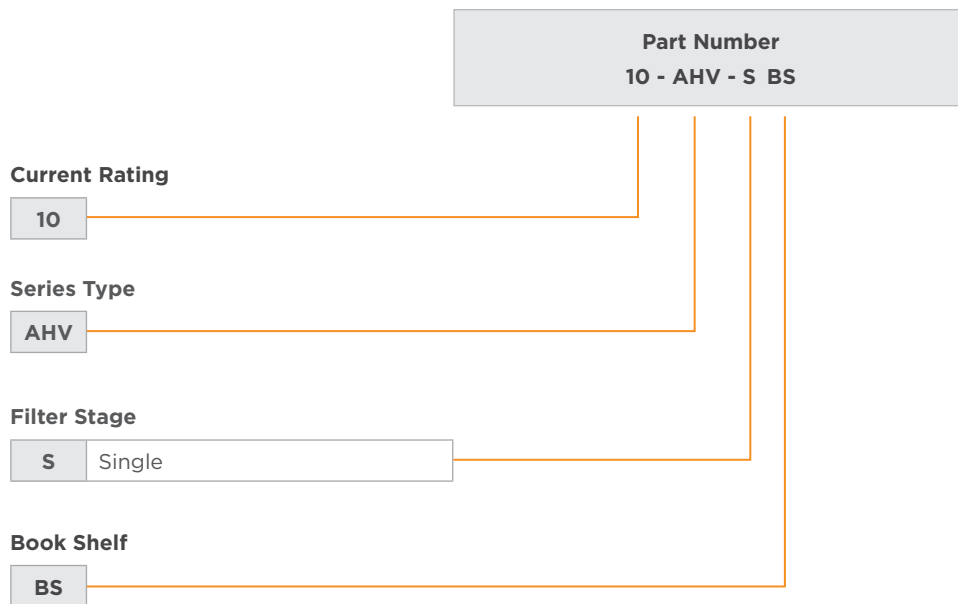
### 125A and 150A



### 180A



## HOW TO ORDER



## te.com

©2022 TE Connectivity. All Rights Reserved.

TE Connectivity, TE Connectivity (logo) and Every Connection Counts are trademarks. All other logos, products and/or company names referred to herein might be trademarks of their respective owners.

The information given herein, including drawings, illustrations and schematics which are intended for illustration purposes only, is believed to be reliable. However, TE Connectivity makes no warranties as to its accuracy or completeness and disclaims any liability in connection with its use. TE Connectivity's obligations shall only be as set forth in TE Connectivity's Standard Terms and Conditions of Sale for this product and in no case will TE Connectivity be liable for any incidental, indirect or consequential damages arising out of the sale, resale, use or misuse of the product. Users of TE Connectivity products should make their own evaluation to determine the suitability of each such product for the specific application.

08/22 TJ