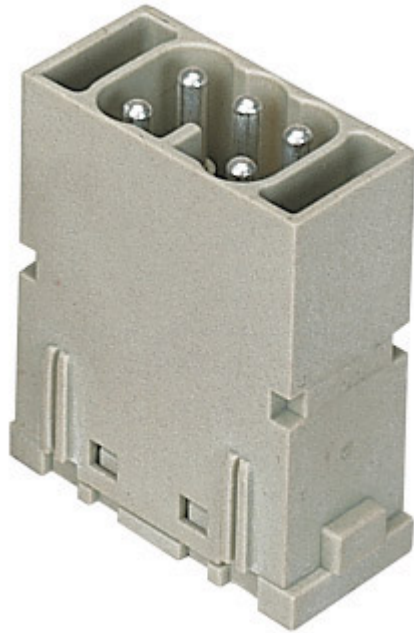


Part number

CX 05 SM



Male modular insert, Mixo series, spring terminal connection, 5 poles, 1 module, 16 A 400 V 6 kV 3

Product description

| | |
|------------------------|----------------------------|
| Product type | Modular insert |
| Series | Mixo |
| Connection type | Spring terminal connection |
| Gender | Male |
| N. of poles | 5 poles |
| Size | 1 module |

Technical data

| | |
|--|---|
| Current | 16 A |
| Voltage | 400 V |
| Rated impulse withstand voltage | 6 kV |
| Pollution degree | 3 |
| Rated voltage according to UL/CSA | 600 V |
| Wire cross-section | 0,14 mm ² - 2,50 mm ² |
| AWG size | 26 - 14 |
| Contact type | Turned silver plated |
| IP degree of protection | IP20 without enclosure, IP65/IP66/IP68/IP69 with enclosure |

Further technical details

| | |
|---|--------------------------------|
| Characteristics according to EN 61984 | 16A 400V 6kV 3; 16A 500V 6kV 2 |
| Insulation resistance | ≥ 10 GΩ |
| Contact resistance | ≤ 3 mΩ |
| Weight | 17,00 g |
| Operating temperature range (min, max) | -40 °C ... +125 °C |
| UL 94 flammability rating | V-0 |

Material properties

| | |
|------------------------------|--|
| Main material | Polycarbonate |
| Colour | RAL 7032 grey |
| RoHs conformity | Compliant with exemption 6(c): copper alloy containing up to 4% lead by weight |
| China RoHs - EFUP | 50 |
| REACH SVHC substances | Yes Lead |

Approvals / Standards

| | |
|---------------------------|---------------------------|
| Reference standard | EN 61984:2009-06 |
| Certifications | CSA, CQC, DNV-GL, BV, EAC |
| UL | ECBT2 |
| cUL | ECBT8 |

General ordering information

| | |
|-------------------|---------------|
| EAN13 code | 8015747096065 |
|-------------------|---------------|

Packaging Information

| | |
|----------------------------------|----------------------|
| Packaging weight | 1,21 kg |
| Packaging volume | 3,51 dm ³ |
| Packaging description | Carton box |
| Packaging quantity | 60 Pcs |
| Packaging EAN code | 8015747221238 |
| Sub-packaging length | 35,00 mm |
| Sub-packaging height | 40,00 mm |
| Sub-packaging width | 155,00 mm |
| Sub-packaging weight | 0,20 kg |
| Sub-packaging volume | 0,22 dm ³ |
| Sub-packaging description | Carton tray |
| Sub-packaging quantity | 10 Pcs |
| Sub-packaging EAN barcode | 8015747096072 |

Part number

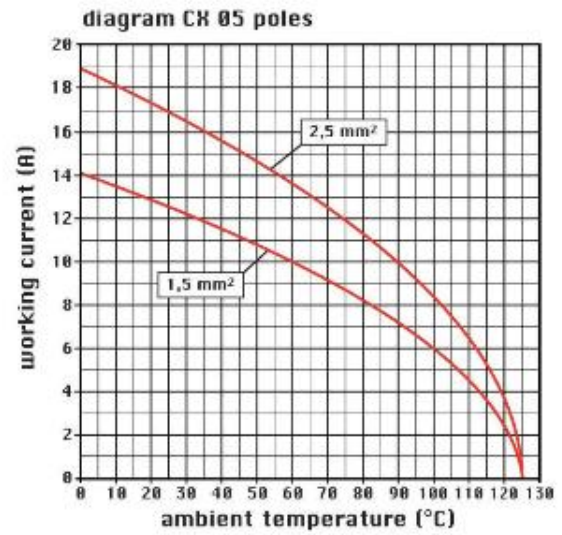
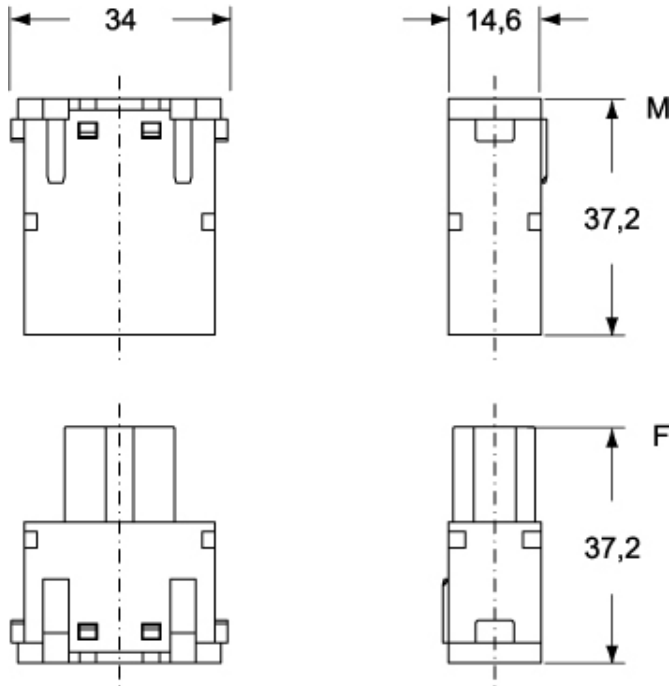
CX 05 SM



Catalogue drawings

Catalogue drawings

CX 05 SM



CX 05 SF

