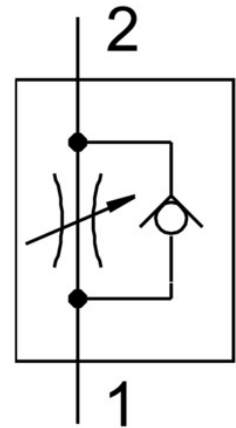
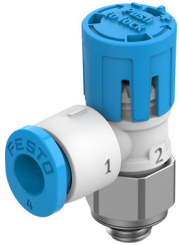


# One-way flow control valve VFOE-LS-T-M5-Q4

Part number: 8068743

FESTO



## Data sheet

Feature	Value
Valve function	Supply air flow control non-return function
Pneumatic connection 1	QS-4
Pneumatic connection 2	M5
Actuation type	Manual
Adjusting element	Rotary knob with detent
Type of mounting	Screw-in
Standard nominal flow rate in flow control direction	85 l/min
Standard nominal flow rate in non-return direction	50 l/min ... 90 l/min
Ambient temperature	-10 °C ... 60 °C
Housing material	PBT
Mounting position	Any
Symbol	00991453
Width across flats	9 mm
Rotatability	360 deg/continuous swiveling not permissible
Operating pressure for entire temperature range	0.02 MPa ... 1 MPa
Operating pressure for entire temperature range	0.2 bar ... 10 bar
Operating pressure for entire temperature range	2.9 psi ... 145 psi
Standard flow rate in flow control direction 6 -> 0 bar	135 l/min
Standard flow rate in non-return direction at 6 -> 0 bar	130 l/min ... 160 l/min
Operating medium	Compressed air as per ISO 8573-1:2010 [7:4:4]
Information on operating and pilot media	Operation with oil lubrication possible (required for further use)
LABS (PWIS) conformity	VDMA24364 zone III
Temperature of medium	-10 °C ... 60 °C
Max. tightening torque	2.4 Nm
Nominal tightening torque	2 Nm
Tolerance for nominal tightening torque	± 20%
Product weight	3.3 g
Note on materials	RoHS-compliant

<b>Feature</b>	<b>Value</b>
Cover material	PBT
Material of dynamic seals	HNBR
Threaded bolt material	Steel, galvanized
Releasing ring material	PBT
Static seal material	NBR