

Pan-Way® LD Surface Raceway System

specifications

LD non-metallic series low voltage, one-piece hinged design, single channel surface raceway includes adhesive backing and is made of impact resistant material with a smooth finish that will not scratch, peel, or corrode. The raceway includes an assortment of bend radius and standard fittings that complement the offering to help route, protect, and conceal low voltage data, voice, and video cabling. LD raceway is available in three sizes and three standard colors that are optimized for use with the Panduit® Pan-Net® communication system.



technical information

Material:	Rigid PVC
Flammability:	UL94V-0; FT4
Voltage Rating:	50V or less
Capacity:	Single channel
Operating and Storage Temperature:	0° to 50°C

key features and benefits

1" bend radius control fittings	Cables in the raceway will satisfy the minimum 1" bend radius requirement, preventing the potential degradation of cable performance; meets TIA/EIA standards
One-piece hinged design	Cables can be laid into the raceway, speeding installation and preventing damage to cables
Adhesive backing	Full length adhesive strip allows easy tool free installation Please refer to part drawing for best practices of installation
Available in different sizes & lengths	Accommodates varying cable types and capacities Available sizes - LD3, LD5, LD10; Available lengths - 6', 8', 10'
Non-metallic construction	Lightweight, reducing installer fatigue and labor required to install the raceway; solid color throughout will not chip, peel, rust or corrode; easy to cut with standard saws and saw blades, eliminating the need for special cutting devices
Distinct colors	Available in three standard colors- IW, EI, WH Raceway is field paintable to match walls and surrounding décor
Full selection of fittings and surface mount boxes	Wide variety of fittings and surface mount boxes available for various LD raceway applications

applications

Pan-Way® LD Surface Raceways are designed to provide easy and economical solutions for routing any low voltage cable along smooth and clean perimeter walls,

baseboards or ceilings. This raceway is a perfect solution for schools, hospitals, offices, homes or anywhere a small, secure, low profile raceway is needed.

LD Raceway	
Raceway:	LD3IW**-A LD5IW**-A LD10IW**-A
LD Raceway Fittings	
Coupler LD10:	CF10IW-X
Coupler LD3/LD5:	CF*IW-E
Inside corner:	ICFC*IW-X
Outside Corner LD10:	OCFC10IW-X
Bend Radius	
Outside Corner:	OCFX*IW-X
Right angle:	RAFC*IW-X
End cap LD10:	ECF10IW-X
End cap LD3/LD5:	ECF*IW-E
Tee:	TFC*IW-X
Drop ceiling/entrance end:	DCF*IW-X
Right angle/entrance end:	RAEFXIW-X
LD5 fire box adapter:	FBA5IW-X
LD Raceway Surface Mount Outlet/Junction Boxes	
Low Voltage	
Single gang, one-piece:	JB1IW-A
Single gang, one-piece, deep:	JB1DIW-A
Single gang, two-piece:	JBX3510IW-A
Power Rated	
Single gang, two-piece:	JBP1IW
Single gang, two-piece, deep:	JBP1DIW
Single gang, two-piece, extension:	JBP1EIW
Single gang, two-piece, intermediate:	JBP1IIW
Single gang, two-piece, snap on:	JBP1FSIW
Single gang, two-piece, round:	RJBX3510IW
Double gang, two-piece:	JBP2IW
Double gang, two-piece, deep:	JBP2DIW
Double gang, two-piece, divided:	JBP2SIW
Double gang, two-piece, snap on:	JBP2FSIW

*Insert raceway size of 3, 5, or 10

**Insert raceway length of 6', 8', or 10'

All parts listed in Off White (IW) color. To order other colors, substitute IW in the part number with (EI) Electrical Ivory, or (WH) White.

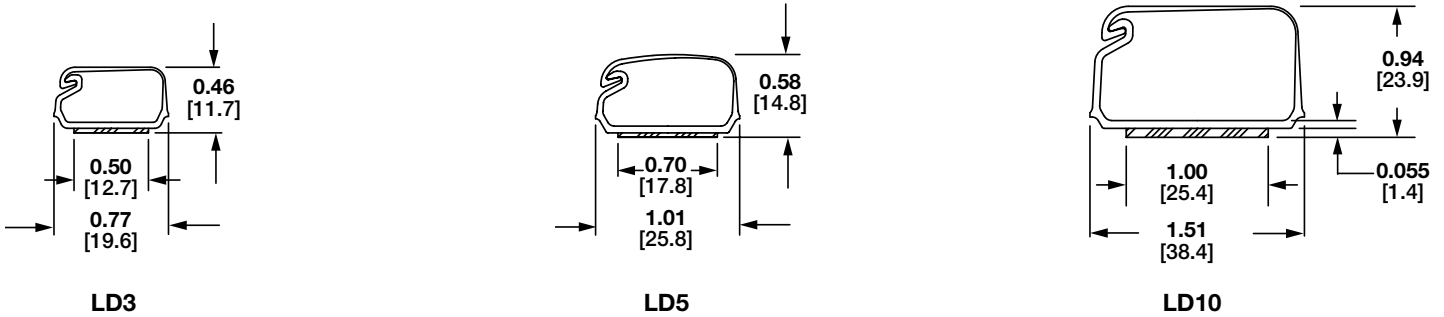
Pan-Way® LD Surface Raceway System

Wire Fill

Raceway Type and Configuration	Fill Area (in ²)	Electrical Cables			Data Grade Cables 24 AWG/UTP CM								Audio/Video		Fiber Optic Cable	
		14 AWG	12 AWG	10 AWG	Cat. 5e - Plenum		Cat. 6		Cat. 6A		Cat. 6A (SD)		RG6		2 Strand	
		THHN/T90			DIA = 0.193		DIA = 0.24		DIA = 0.30		DIA = 0.24		DIA = 0.275		DIA = 0.175	
		FILL			FILL		FILL		FILL		FILL		FILL		FILL	
		MAX	MAX	MAX	SPEC	MAX	SPEC	MAX	SPEC	MAX	SPEC	MAX	SPEC	MAX	SPEC	MAX
		(UL Temp Rise Test)			(40%)	(60%)	(40%)	(60%)	(40%)	(60%)	(40%)	(60%)	(40%)	(60%)	(40%)	(60%)
LD3	0.21	**	**	**	2	4	1	2	1	1	1	2	1	2	3	5
LD5	0.38	**	**	**	5	7	3	5	2	3	3	5	2	3	6	9
LD10	1.00	**	**	**	13	20	8	13	5	8	8	13	6	10	16	24

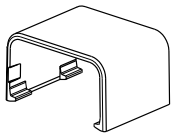
For all cable options please see the Raceway cable fill calculator on <https://www.panduit.com/en/support/tools1/calculators-and-design-tools.html>

LD Raceway

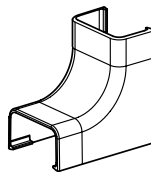


Dimensions are in inches. [Dimensions in brackets are metric].

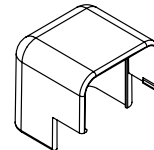
Fittings



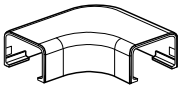
CF



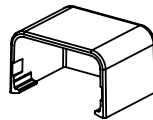
ICFC



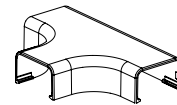
OCFC



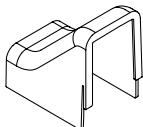
RAFC



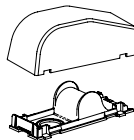
ECF



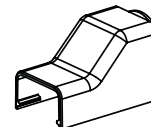
TFC



DCF



RAEFX



FBA

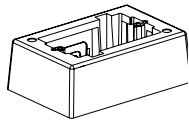
Pan-Way® LD Surface Raceway System

Compatible LD Raceway Surface Mount Outlet/Junction Boxes

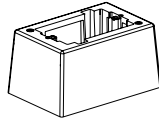
Low Voltage or Fiber Optic ONLY	
JB1**-A	Single gang one-piece outlet box with adhesive backing
JB1D**-A	Single gang one-piece deep outlet box with adhesive backing
JBX3510**-A	Single gang two-piece snap together outlet box with adhesive backing
Power, Low Voltage or Fiber Optic	
RJBX3510**	Single gang two-piece screw together round outlet box
JBP1**	Single gang two-piece screw together outlet box
JBP1D**	Single gang two-piece screw together deep outlet box
JBP1E**	Single gang two-piece screw together extension outlet box
JBP1I**	Single gang two-piece screw together intermediate outlet box
JBP2**	Double gang two-piece screw together deep outlet box
JBP2S**	Double gang two-piece screw together divided outlet box
JBP2D**	Double gang two-piece screw together deep outlet box
JBP2FS**	Fast-Snap™ Double Gang Power Rated Two-Piece Snap Together Outlet Box

** = Available colors: Off White (IW), Electrical Ivory (EI), White (WH).

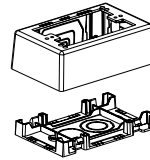
Surface Mount Outlet/Junction Boxes



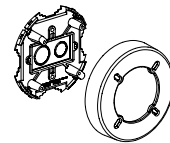
JB1



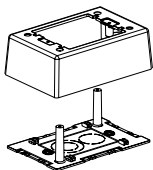
JB1D



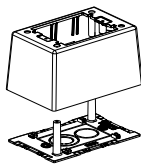
JBX3510



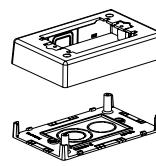
RJBX3510



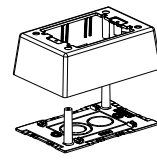
JBP1



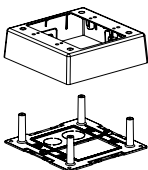
JBP1D



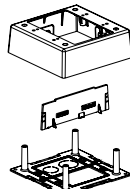
JBP1E



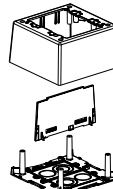
JBP1I



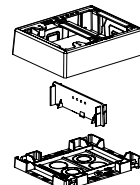
JBP2



JBP2S



JBP2D



JBP2FS

WORLDWIDE SUBSIDIARIES AND SALES OFFICES

PANDUIT US/CANADA
Phone: 800.777.3300

PANDUIT EUROPE LTD.
London, UK
Phone: 44.20.8601.7200

PANDUIT SINGAPORE PTE. LTD.
Republic of Singapore
Phone: 65.6305.7575

PANDUIT JAPAN
Tokyo, Japan
Phone: 81.3.6863.6000

PANDUIT LATIN AMERICA
Guadalajara, Mexico
Phone: 52.33.3777.6000

PANDUIT AUSTRALIA PTY. LTD.
Victoria, Australia
Phone: 61.3.9794.9020

For a copy of Panduit product warranties, log on to www.panduit.com/warranty

PANDUIT®

For more information
Visit us at www.panduit.com
Contact Customer Service by email: cs@panduit.com
or by phone: 800.777.3300

© 2022 Panduit Corp.
ALL RIGHTS RESERVED.
Printed in the U.S.A.
SRSP21--WW-ENG
4/2022