

TECHNICAL DATA

Fluke DS703 FC Diagnostic Video Borescope



Clearly view and inspect details that matter most even in hard to access areas of equipment in dirty, harsh industrial environments. Now in Full HD.

The Fluke DS703 FC Video Borescope puts high resolution images in the palm of your hand and provides many valuable features to make your job easier.

- Bright 7" high resolution LCD touch screen.
- High Definition, dual view imaging probe and adjustable light to provide a clear image.
- Large variety of rugged and high resolution accessory probes to address your specific application needs.
- Macro to micro zoom
- Up-is-Up™ technology for an appropriate orientation, regardless of the probe location or position
- Fluke Connect™ support including wireless image transfer.

SUPERIOR IMAGE QUALITY

DS703 FC DIAGNOSTIC VIDEO BORESCOPE

High Resolution:
1280 X 720 (720P)

Includes 8.5mm diameter dual view probe with 1.2 meter long cable

NOW AVAILABLE

5.5mm diameter articulating probe with 0.7 meter long cable

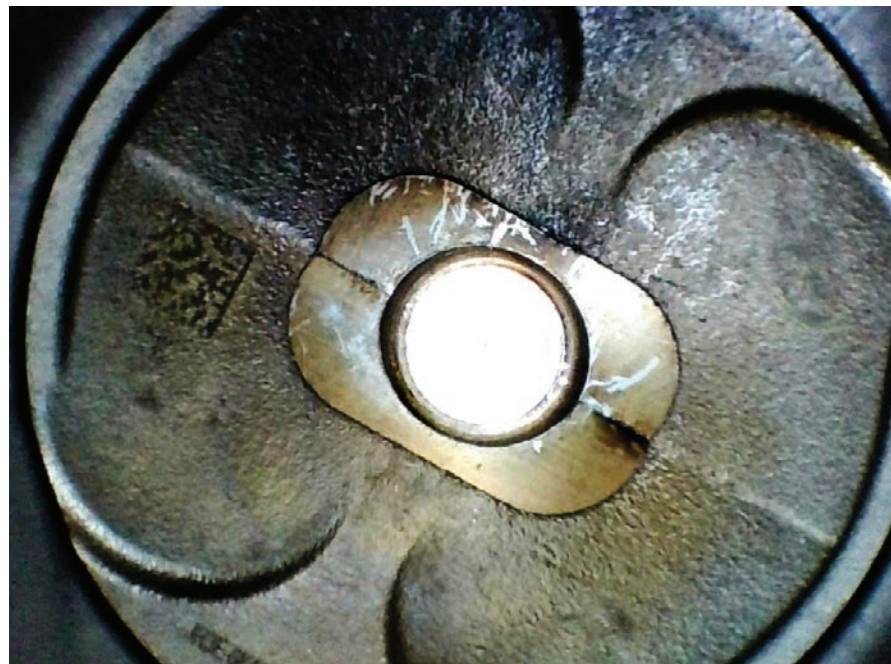


Photo above: Engine cylinder head inspection.

Detailed specifications

Video Borescope Probe	8.5mm Dual View (1.2M) (Included with DS703 FC)	8.5mm Dual View (3M)	5.5mm Dual View (1M)	3.8mm Forward View	5.5mm One Way Articulation	9.0 mm Forward View
Outer Diameter of Tip	8.5mm	8.5mm	5.5mm	3.8mm	5.5mm	9.0mm
Length	1.2 meter	3 meter	1 meter	1 meter	0.7 meter	20 meter reel
Resolution	1280 x 720 (720p) (HD)	1280 x 720 (720p) (HD)	1280 x 720 (720p) (HD)	1280 x 720 (720p) (HD)	1280 x 720 (720p) (HD)	640 x 480
Depth of Field (min)	35.5mm (Front) 35.5mm (Side)	35.5mm (Front) 35.5mm (Side)	12.7mm (Front) 6.3mm (Side)	5mm	12.7mm	12.7mm
Depth of Field (max)	111.7mm (Front) 111.7mm (Side)	111.7mm (Front) 111.7mm (Side)	431.8mm (Front) 190.5mm (Side)	28mm	88.9mm	88.9mm
Field of View	75 degrees	75 degrees	70 degrees	100 degrees	78 degrees	75 degrees
Up-is-Up™ technology	Yes	Yes	N/A			
Length of Distal Tip	50mm	50mm	46.4mm	18mm	19mm and 71.3mm	N/A
Outer Diameter of Conduit	6.1mm	6.1mm	3.8mm	3.6mm	4.2mm	≤ 9.0mm
Conduit Pliability	Flexible but compliant	Flexible but compliant				Flexible fiberglass reel
Waterproof	Waterproof to 2 psi	Waterproof to 2 psi				
LED Type	Standard white	Standard white				
Range of motion	N/A	N/A			180 degrees	N/A
Radius of bend	N/A	N/A			25mm	N/A
Articulation type	N/A	N/A			Mechanical	N/A
Articulation style	N/A	N/A			One way	N/A
Still image format	JPG	JPG				
Video recording format	AVI	AVI				
Video output format	MPEG compression	MPEG compression				
Digital zoom	Adjustable from 1x to 8x zoom	Adjustable from 1x to 8x zoom				
Camera Direction	Front and Side View	Front and Side View	Front and Side View	Front View	Front View	Front View
Streaming video	Via HDMI	Via HDMI				
All video borescope probes are resistant to the following chemicals:	Antifreeze, Axle Grease, Brake Cleaner, Brake Fluid, Diesel Fuel, Gasoline, Glass Cleaner, Household Grease Cutting Cleaner (Simple Green, 409, etc.), Hydraulic Fluid, Isopropyl Alcohol, Lens Cleaning Fluid, Machinist Cutting Fluid, Motor Oil, Pag Fluid (Refrigerant Compressor Lubricant), Petroleum Jelly, Transmission Fluid, Urea (Diesel Exhaust Fluid), WD40					

	DS703 FC
LCD screen	
Type	7 inch Capacitive touch screen
Refresh rate	30 hz
LED backlight	Adjust display brightness for optimal viewing
Communication	
Wireless interface	WiFi 802.11b/g/n, Range: 33 feet (10.06 meters)
Data transfer	USB and micro HDMI cable
FlukeConnect™	Save and share images via FlukeConnect™
Instant upload to the cloud	Yes, with FlukeConnect™
General features	
Color palettes	Visible light, grayscale or inverted
Internal memory	6 GB
Physical buttons	Intuitive, easy to navigate button technology, 4 functional keys, 4 navigational, one capture or select button
Carrying case	Protective EVA case
Strap	Hand Strap and Neck Strap included
Power adapter	AC adapter/battery charger input
Battery	6400mAh 3.7 volt rechargeable internal li-ion battery
Battery life	3 hours at 50 % LED brightness
Dimensions	6.98 x 8.85 inches (17.73 x 22.48 cm)
Weight	1.95 lbs (0.88 Kg)
General Specifications and Safety	
Tablet	IP54, dust protected and protected against water projected from a nozzle
Drop test	2 meter (6.56 feet)
Operating temperature	0 °C to 45 °C (32 °F to 113 °F), 50 °C (122 °F) for less than 10 minutes
Storage temperature	-40 °C to 60 °C (-40 °F to 140 °F)
Operating humidity	90 % at 35 °C (95 °F), 75 % at 40 °C (104 °F), 45 % at 50 °C (122 °F)
Warranty	2 years

NEW PRODUCT

FLK-5.5MM Scope .7M articulating probe

- 180 degrees of articulation
- 5.5mm diameter designed to pass through spark plug and injector ports
- High resolution camera
- Great for a complete valve inspection



Photo above: Valve inspection

Ordering information

FLK-DS703 FC Diagnostic Video Borescope

What's included

Diagnostic videoscope with 8.5mm Dual View (1.2M) probe, hand strap, neck strap, USB cable, AC power supply/battery charger, TPAK magnetic hanger, protective EVA case

Optional accessories

- FLK-5.5MM Scope** .7M articulating probe
- FLK-3.8MM Scope** 1M probe, forward view
- FLK-5.5MM Scope** 1M probe, dual view
- FLK-8.5MM Scope** 3M probe, dual view
- FLK-9MM Scope** forward view, 20m probe reel

Visit your local Fluke website or contact your local Fluke representative for more information.



Photo above: Spark plug port inspection

Fluke. *Keeping your world up and running.*

www.fluke.com

©2022 Fluke Corporation.
Specifications subject to change without notice.
6/20222 20376-6010402h-en

Modification of this document is not permitted without written permission from Fluke Corporation.