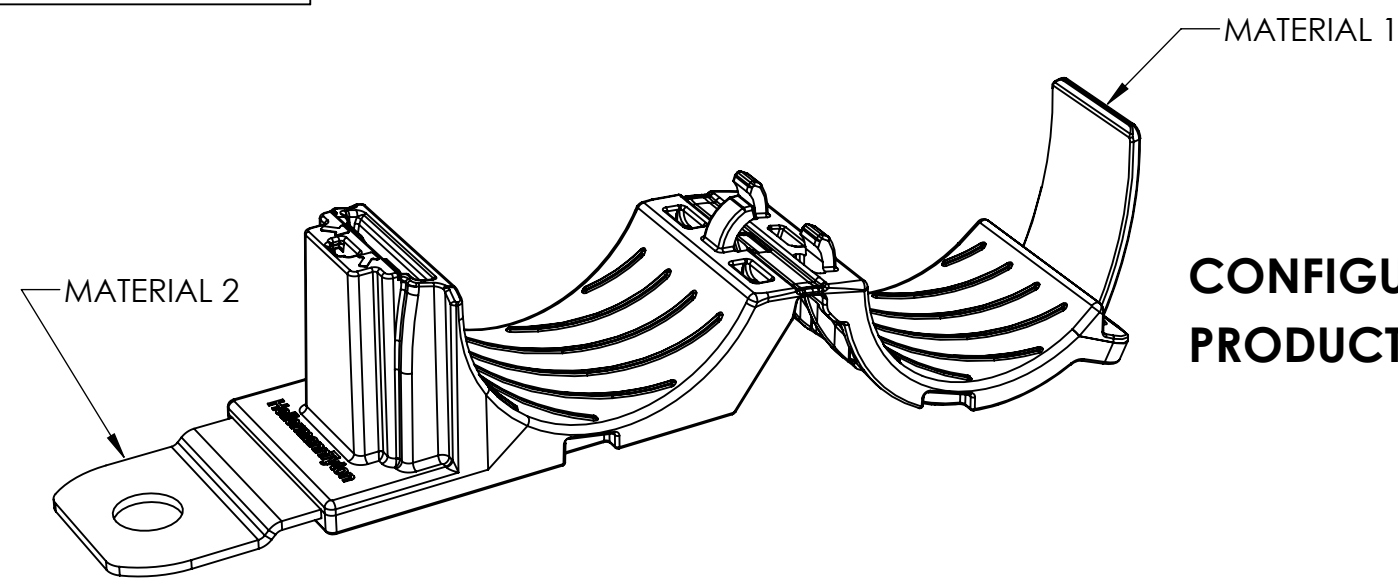
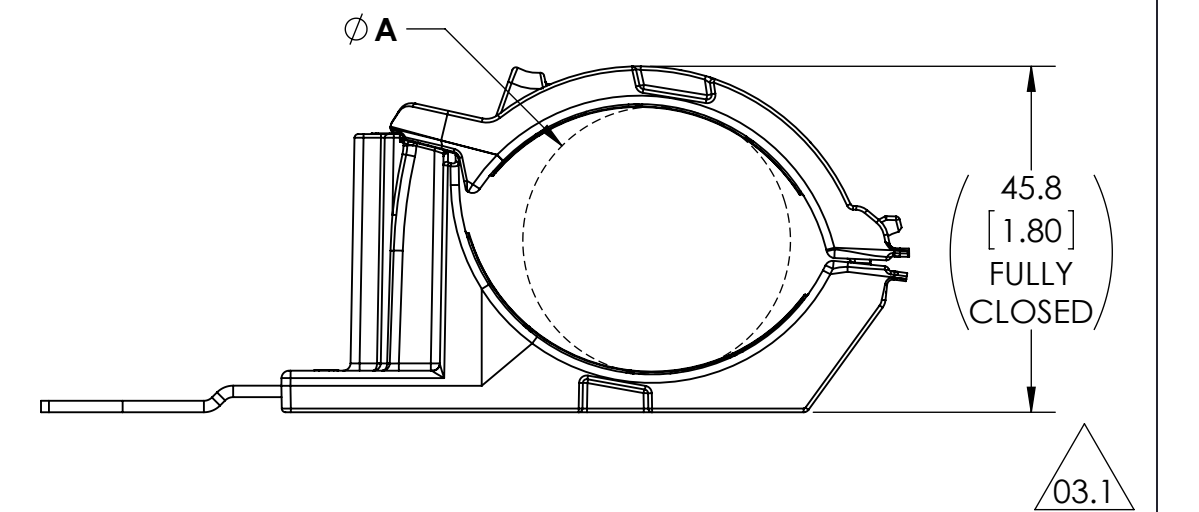
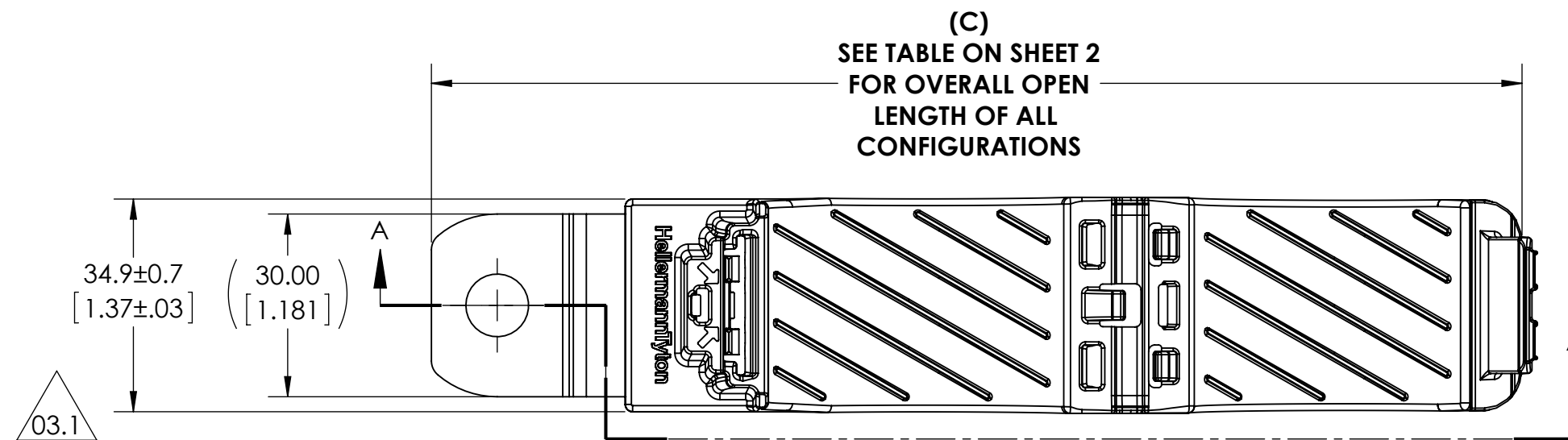


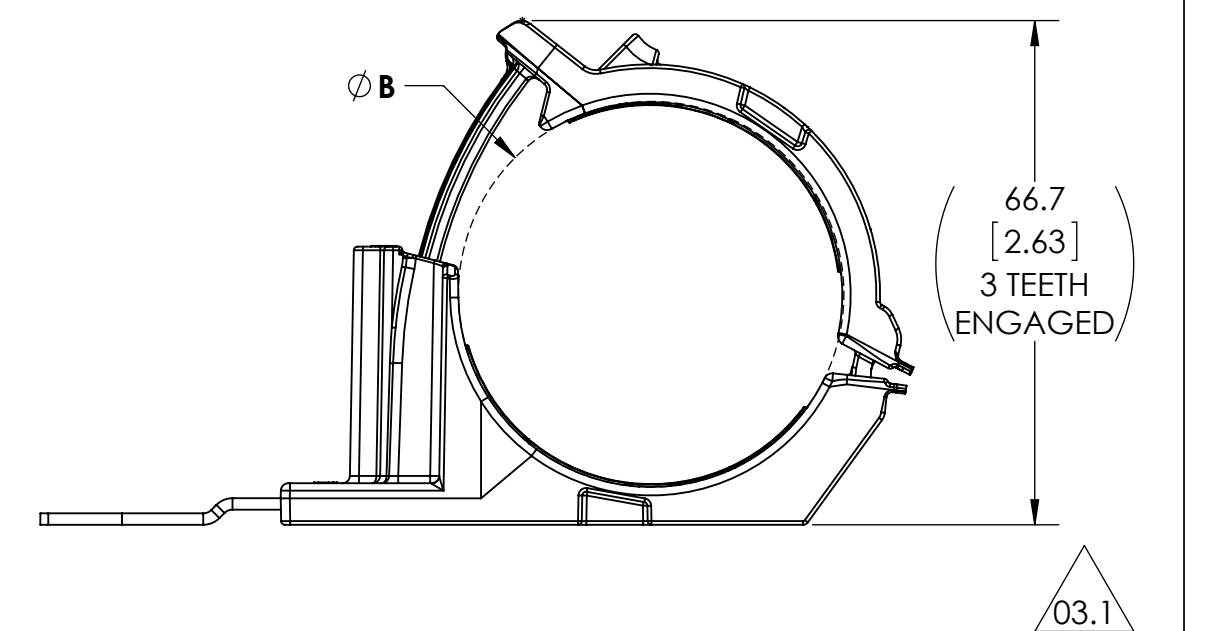
Revision level			Revision Record	Changed	Date	Approved	Date
Drawing	State	Part					
03.1	Design Release	A	SEE ECN# 013325	KEP	3/25/2016	MHT	3/25/2016



**CONFIGURATION 1 SHOWN
PRODUCT SHIPPED IN CLAMP OPEN POSITION**



MINIMUM BUNDLE DIAMETER



MAXIMUM BUNDLE DIAMETER

03.1

INITIAL MOLD VALIDATION:

1. ITS-0003 RATCHET P CLAMP SOLID MANDREL TEST:
EXCEEDED 445 NEWTONS (100 LBS) MIN AT A
NOMINAL BUNDLE DIAMETER OF 44.45 [1.750]
TESTING ONLY REQUIRED OF CONFIGURATION
*RCD180SM10, *RCD180LM10, AND *RCD90LM10
*TESTING CAN BE SUBSTITUTED WITH M6, M8, M12
VERSION MOUNTING HOLES

2. ITS-0008 CLOSE AND RELEASE TEST:
EXCEEDED 445 NEWTONS (100 LBS) MIN AT A
NOMINAL BUNDLE DIAMETER OF 44.45 [1.750]
AFTER CLOSING AND RELEASING 40 TIMES

3. ITS-0014 LOW TEMPERATURE HINGE TEST:
NO DAMAGE OCCURED AFTER BENDING LIVING
HINGE 40 TIMES AT -40°C

NOTE: TESTING #2 AND #3 CAN BE DONE ON ANY
TYPE NUMBER AND WILL APPLY TO ALL OTHER TYPE
NUMBERS IN THE TABLE ON SHEET 2

03.1

PERFORMANCE REQUIREMENTS:

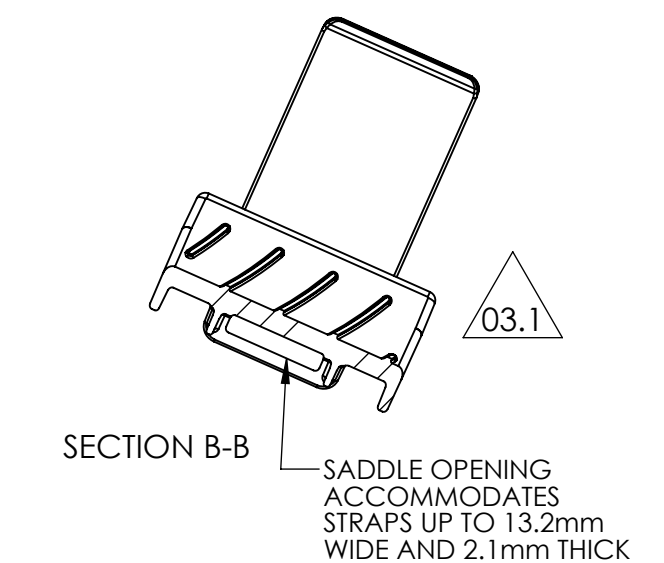
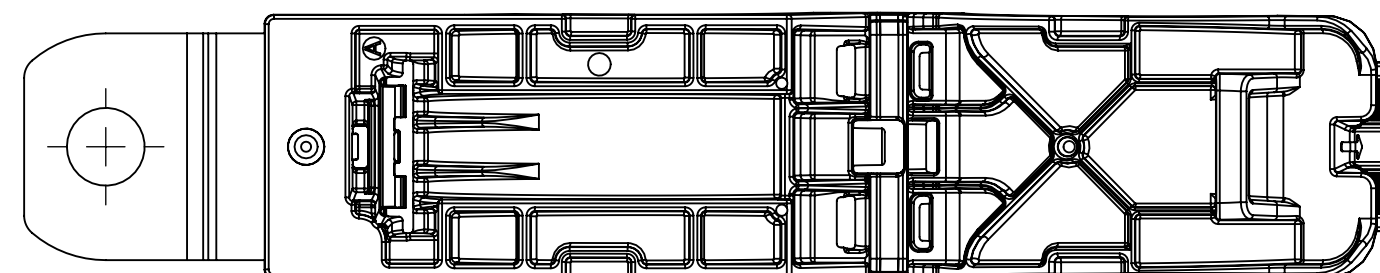
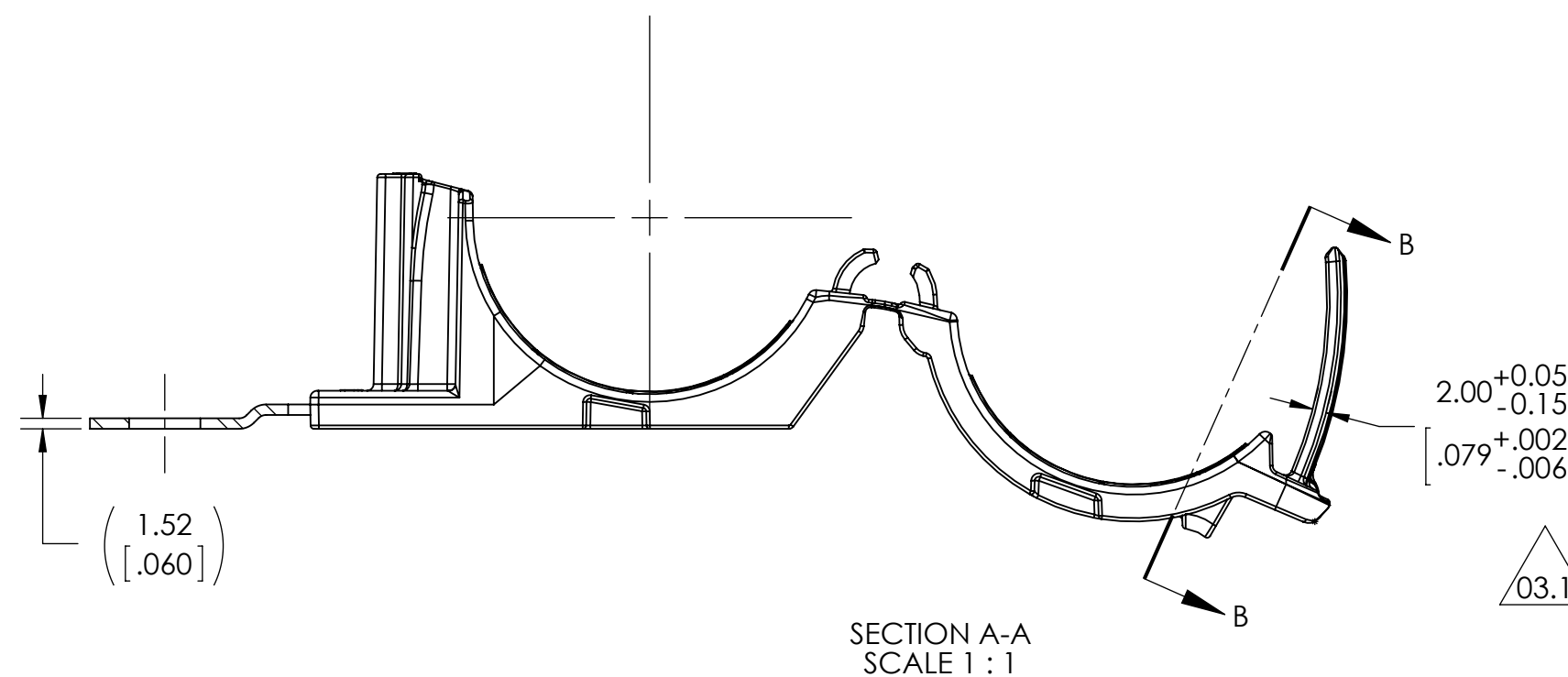
DRY AS MOLDED WITH ≤ 0.5% MOISTURE CONTENT:

4. ITS-0001 RATCHET P CLAMP SPLIT MANDREL TEST:
445 NEWTONS (100 LBS) MIN AT A NOMINAL BUNDLE
DIAMETER OF 44.45 [1.750]

NOTE: TESTING CAN BE DONE ON ANY TYPE NUMBER
AND WILL APPLY TO ALL OTHER TYPE NUMBERS IN THE
TABLE ON SHEET 2

5. MAXIMUM PERCENT REGRIND PERMISSABLE: 25%

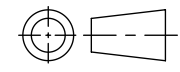
6. MAXIMUM ALLOWABLE FLASH OR MISMATCH TO
BE: 0.25mm



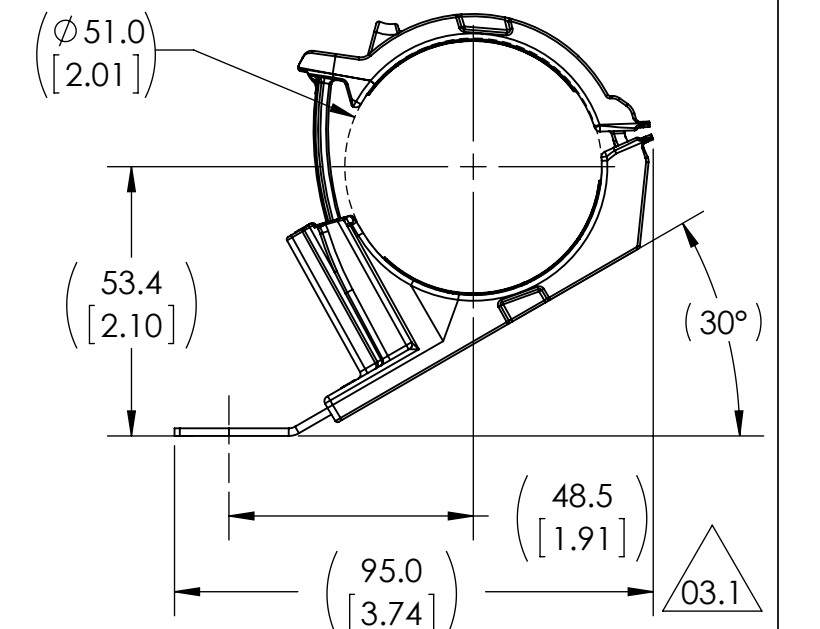
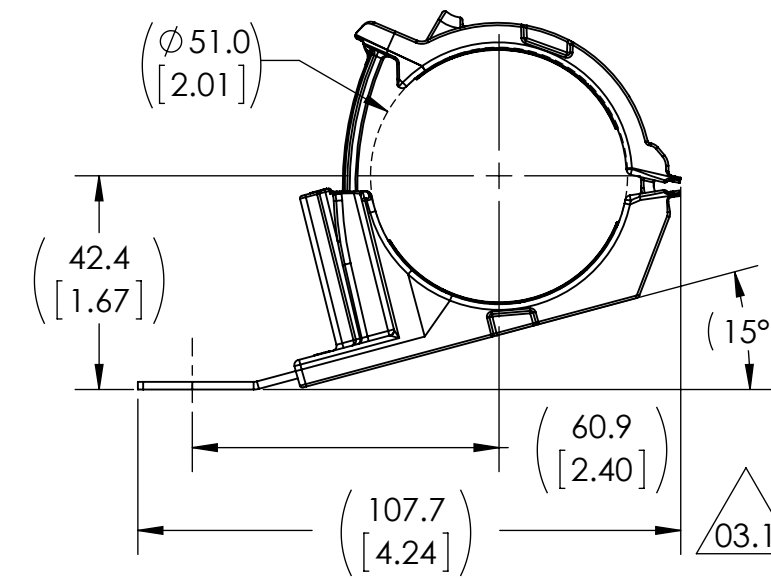
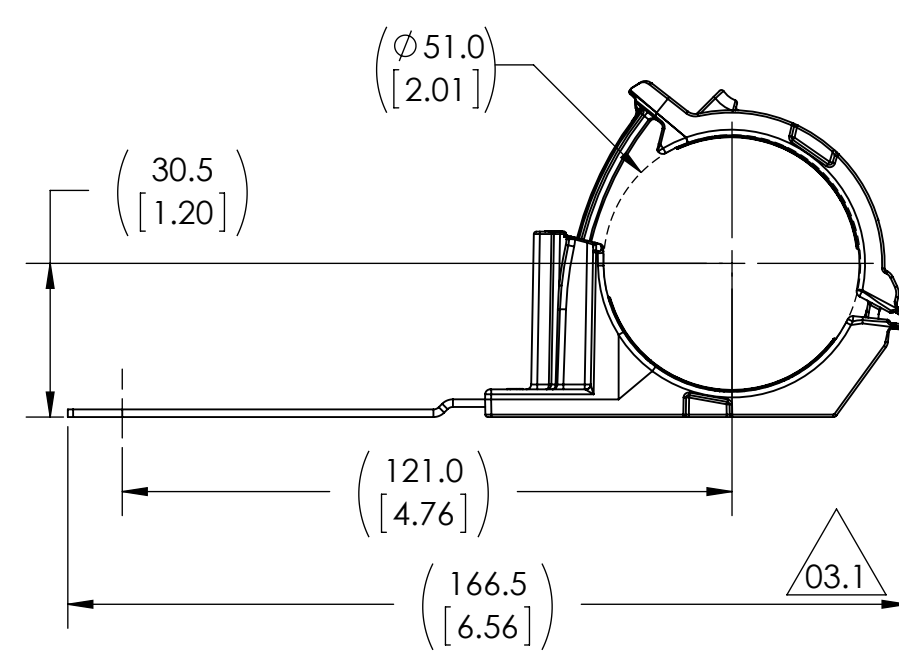
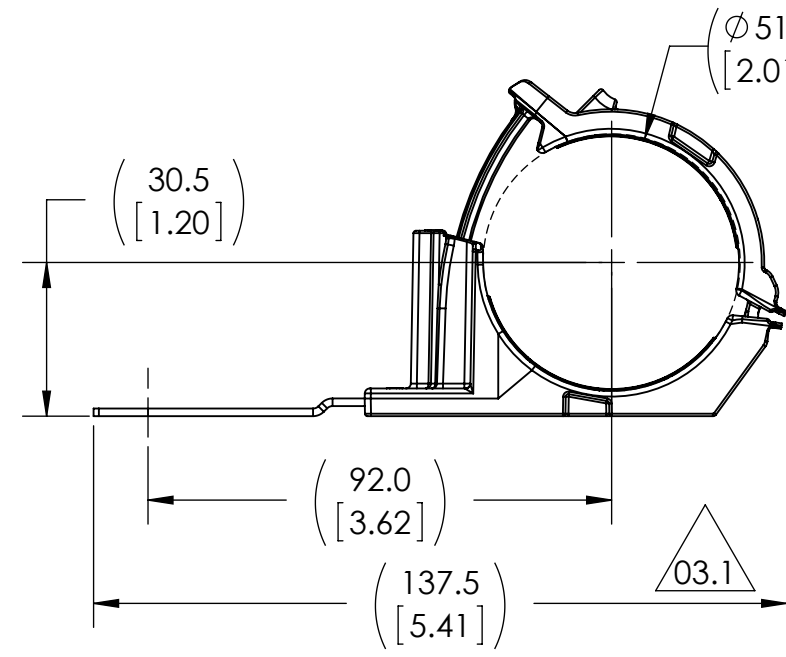
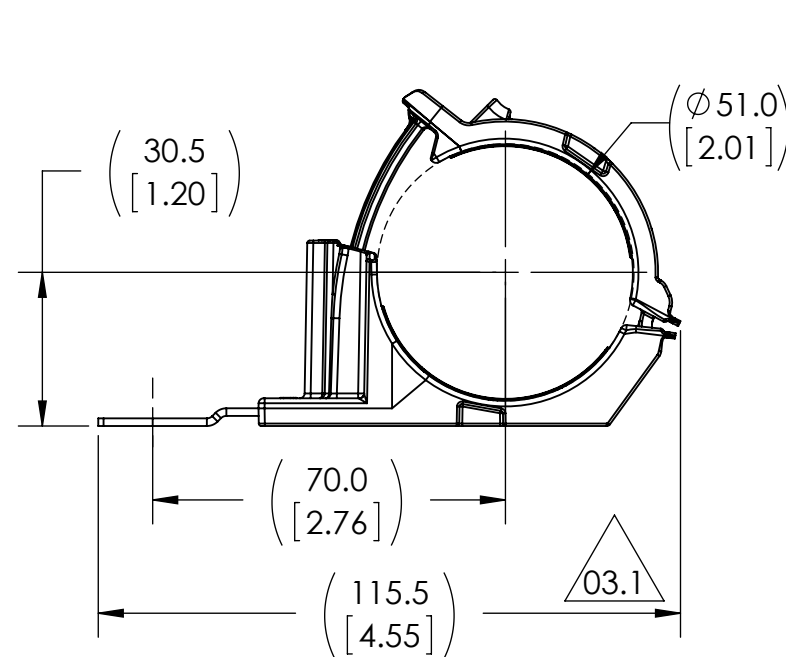
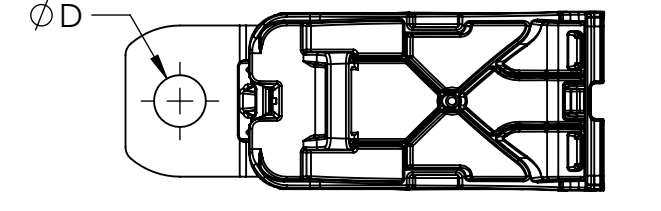
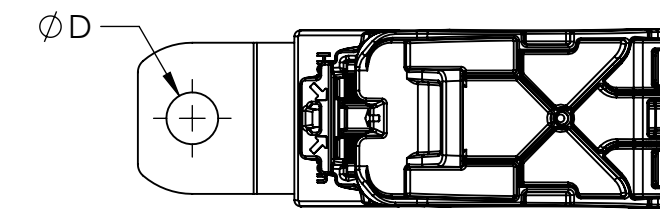
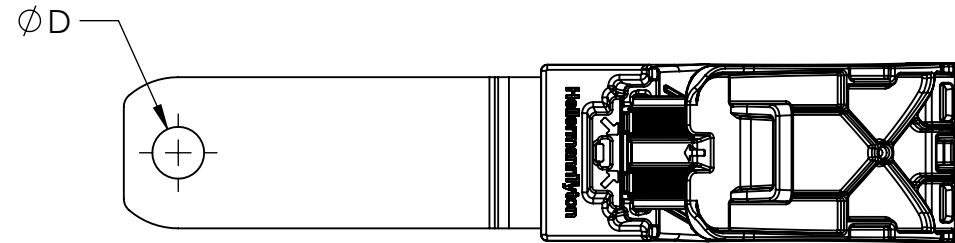
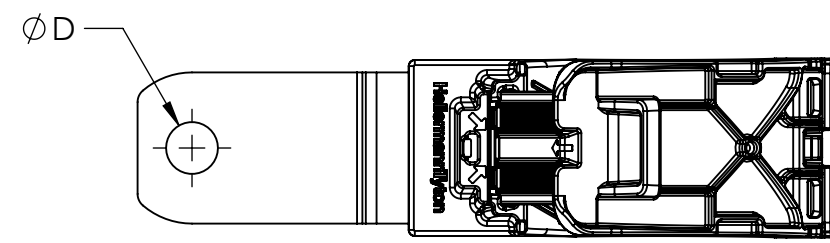
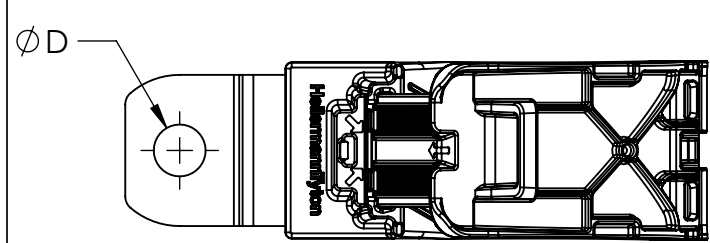
03.1

BUNDLE TYPES	A MINIMUM DIAMETER	B MAXIMUM DIAMETER
SOFT	36.0 [1.42]	51.0 [2.00]
HARD	35.2 [1.39]	49.9 [1.96]

Notes	Material 1. PA66HIRHSUV 2. ZINC PLATED STEEL	Units: millimeters Dimension without tolerances details to: .xxx = ±.013 .xx = ±.13 .x = ±.3 None = ±.8 ∠ = ±0.5° Dimension Formatted mm{in}	The copyright of this drawing is reserved by HellermannTyton. It is issued on condition that it is not reproduced, copied, or disclosed to a third party, either wholly or in part, without the consent of HellermannTyton.	Drawn	KEP	08/21/2015	Article/Type-No SEE CHART (SHEET 2)	Scale 1:1
				Approved	MHT	8/21/2015		
				 North America Email: corp@htamericas.com Web: www.hellermann.tyton.com			Drawing-No 15-0341-104-CSU	Production : Phase Format C Sheet 1/2



Revision level			Revision Record	Changed	Date	Approved	Date
Drawing	State	Part					
03.1	Design Release	A	SEE ECN# 013325	KEP	3/25/2016	MHT	3/25/2016



CONFIGURATION: 1

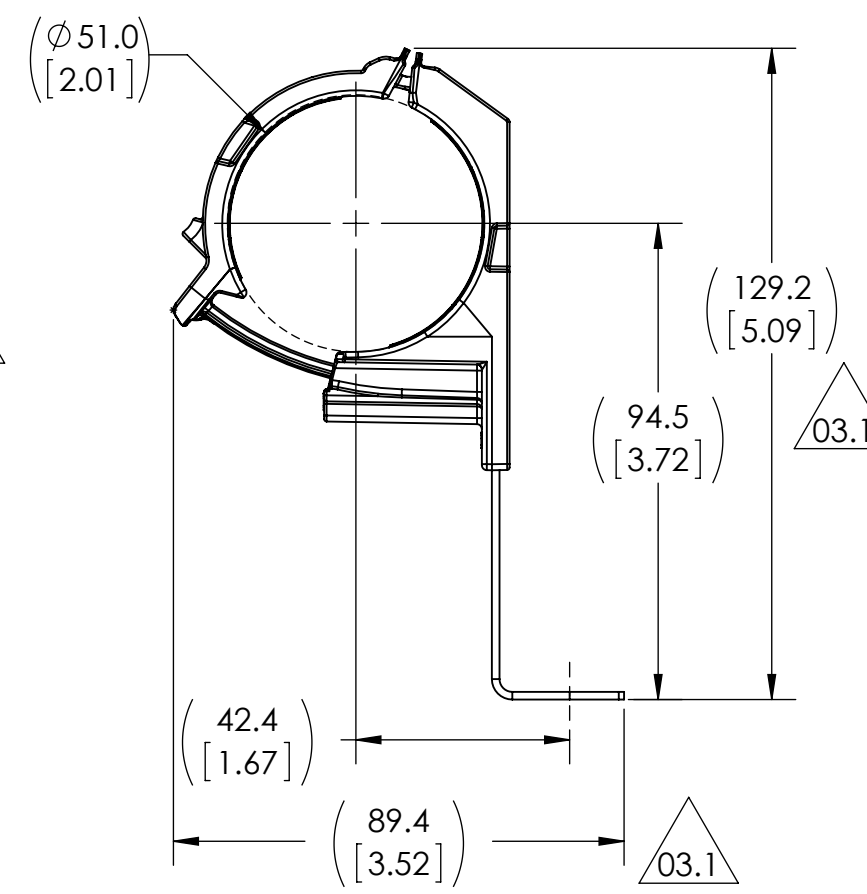
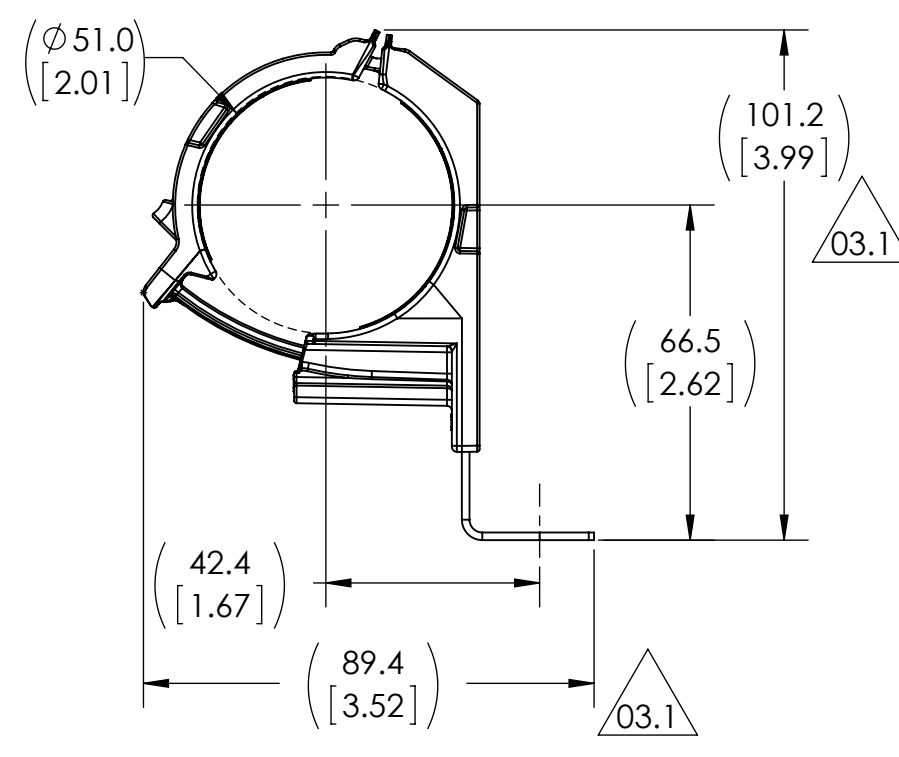
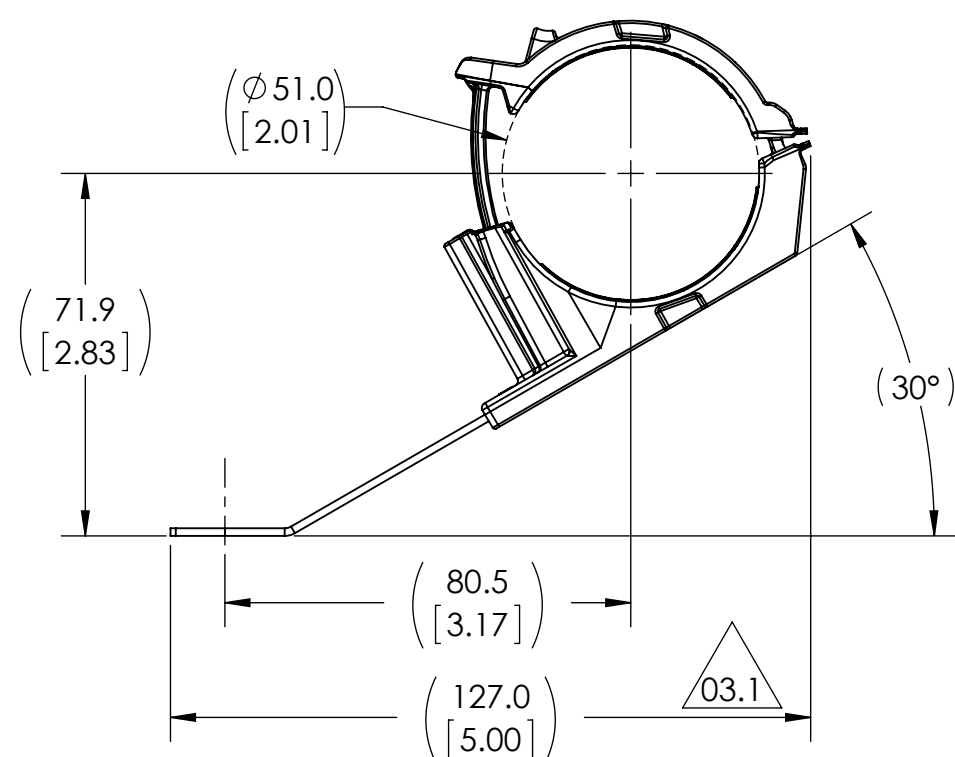
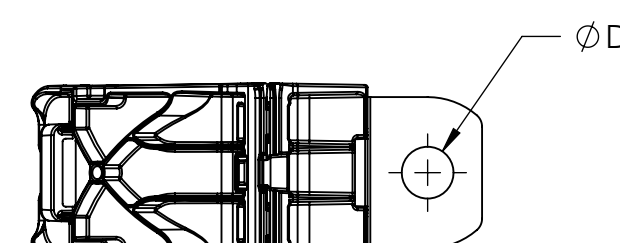
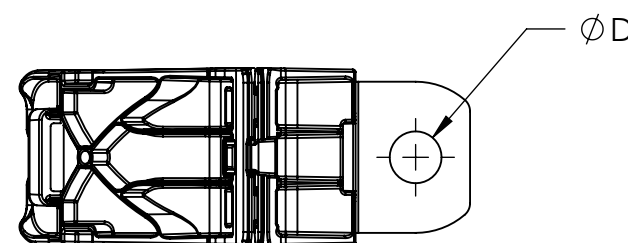
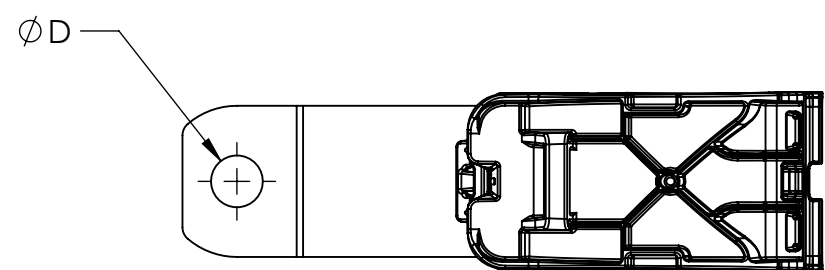
CONFIGURATION: 2

CONFIGURATION: 3

CONFIGURATION: 4

CONFIGURATION: 5

**ALL VIEWS IN MAXIMUM BUNDLE DIAMETER
PRODUCT SHIPPED IN CLAMP OPEN POSITION**



CONFIGURATION: 6

CONFIGURATION: 7

CONFIGURATION: 8

CONFIGURATION	DESCRIPTION	D ±0.13	TYPE	C - OVERALL OPEN LENGTH REFERENCE (SEE SHEET 1)
1	180° SHORT	6.50 [.256]	RCD180SM6	181.5 [7.15]
		8.31 [.327]	RCD180SM8	
		10.29 [.405]	RCD180SM10	
		12.95 [.510]	RCD180SM12	
2	180° MEDIUM	6.50 [.256]	RCD180MM6	203.5 [8.01]
		8.31 [.327]	RCD180MM8	
		10.29 [.405]	RCD180MM10	
3	180° LONG	6.50 [.256]	RCD180LM6	232.5 [9.15]
		8.31 [.327]	RCD180LM8	
		10.29 [.405]	RCD180LM10	
4	15° SHORT	6.50 [.256]	RCD15SM6	180.9 [7.12]
		8.31 [.327]	RCD15SM8	
		10.29 [.405]	RCD15SM10	
5	30° SHORT	6.50 [.256]	RCD30SM6	178.8 [7.04]
		8.31 [.327]	RCD30SM8	
		10.29 [.405]	RCD30SM10	
6	30° LONG	6.50 [.256]	RCD30LM6	215.8 [8.50]
		8.31 [.327]	RCD30LM8	
		10.29 [.405]	RCD30LM10	
7	90° SHORT	6.50 [.256]	RCD90SM6	167.2 [6.58]
		8.31 [.327]	RCD90SM8	
		10.29 [.405]	RCD90SM10	
8	90° LONG	6.50 [.256]	RCD90LM6	195.2 [7.69]
		8.31 [.327]	RCD90LM8	
		10.29 [.405]	RCD90LM10	
		12.95 [.510]	RCD90LM12	

Notes	Material	Units: millimeters	The copyright of this drawing is reserved by HellermannTyton. It is issued on condition that it is not reproduced, copied, or disclosed to a third party, either wholly or in part, without the consent of HellermannTyton.	Drawn	KEP	08/21/2015	Article/Type-No	SEE CHART	Scale	2:3
	1. PA66HIRHSUV 2. ZINC PLATED STEEL	Dimension without tolerances details to:		Approved	MHT	8/21/2015	Title	RCD RATCHET P CLAMP, SIZE D, CLAMP RANGE 36.0 TO 51.0	Project Number	PRP15-0341
		.xxx = ±.013 .xx = ±.13 .x = ±.3 None = ±.8 < = ±0.5*		HellermannTyton North America Email: corp@htamericas.com Web: www.hellermann.tyton.com		Drawing-No	15-0341-104-CSU	Production : Phase	Format	C
		Dimension Formatted mm/(in)				Sheet	2/2			