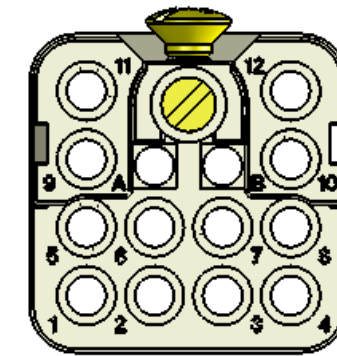
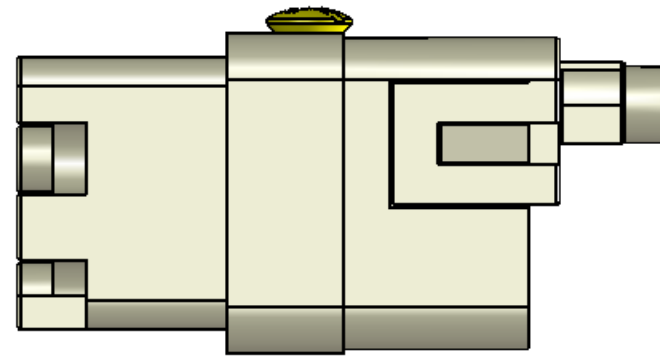
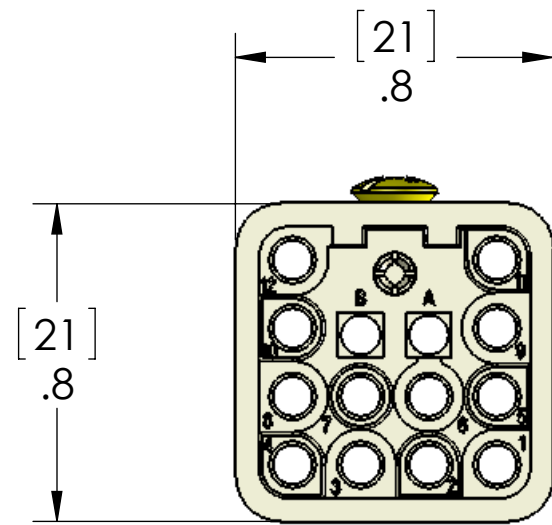


REVISIONS			
REV.	DESCRIPTION	DATE	APPROVED
A	redrawn in sw	5/25/2016	BEM



CRIMP PINS ORDERED SEPERATELY	
CRIMP PIN P/N	WIRE AWG
CDFA-0.3	22-26
CDFA-0.5	18-20
CDFA-1.0	18
CDFA-1.5	16
CDFA-2.5	14

MATERIALS	
HOUSING:	GLASS REINFORCED THERMOPLASTIC
	NICKEL PLATED BRASS HARDWARE
SCREWS:	NICKEL PLATED BRASS
RATINGS:	UL/CSA - 600V, 10A. EN 400V/6kV/2, 10A
APPROVALS:	UL & CSA

**PROPRIETARY AND CONFIDENTIAL**  
 THE INFORMATION CONTAINED IN THIS DRAWING IS THE SOLE PROPERTY OF MENCOM CORPORATION. ANY REPRODUCTION IN PART OR AS A WHOLE WITHOUT THE WRITTEN PERMISSION OF MENCOM CORPORATION IS PROHIBITED.

UNLESS OTHERWISE SPECIFIED:		NAME
DIMENSIONS ARE IN INCHES		DCG
TOLERANCES:		
FRACTIONAL ± 1/64		DRAWN
ANGULAR: MACH ± 5° BEND ± 5°		CHECKED
TWO PLACE DECIMAL ± .01		ENG APPR.
THREE PLACE DECIMAL ± .004		MFG APPR.
		Q.A.
		COMMENTS:
MATERIAL		
FINISH		
DO NOT SCALE DRAWING		

<b>MENCOM CORPORATION</b>		
TITLE:		
SIZE	DWG. NO.	REV
<b>B</b>	<b>CQF-12</b>	<b>A</b>
SCALE: 2:1	WEIGHT:	SHEET 1 OF 1