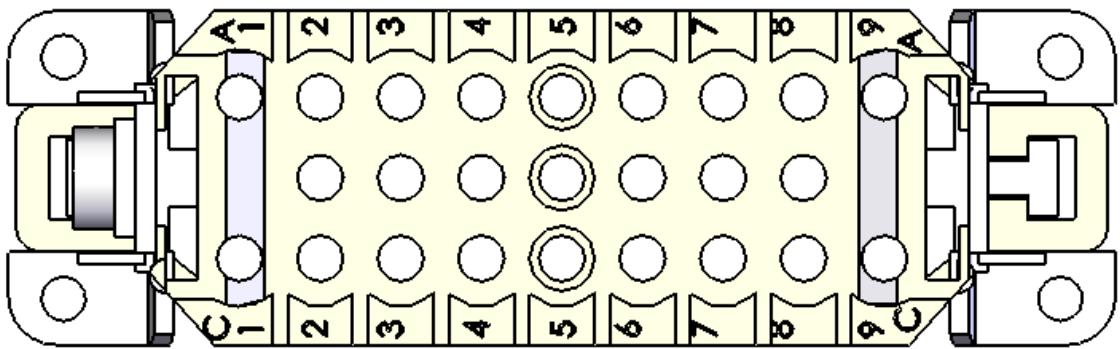
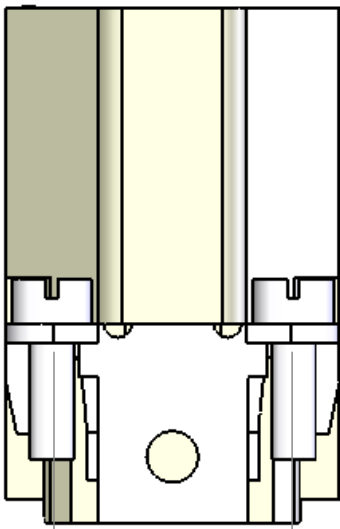
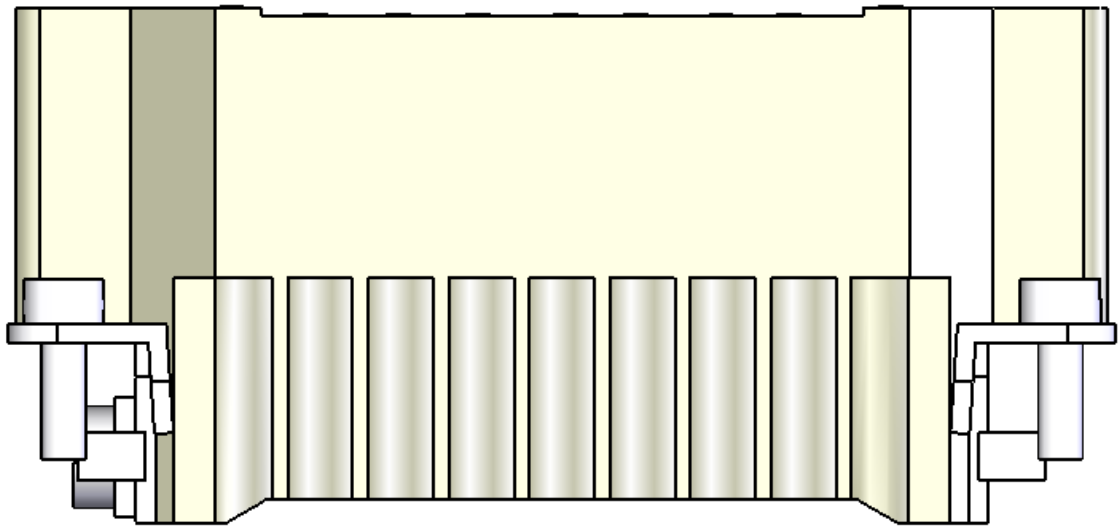
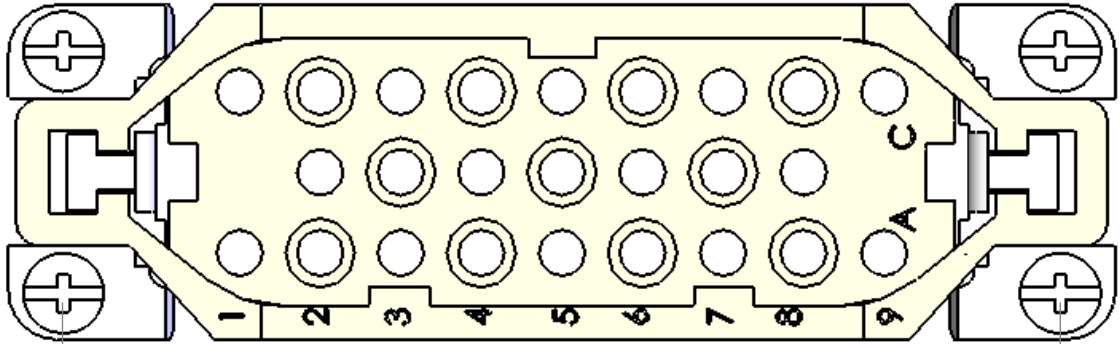


8 7 6 5 4 3 2 1

REVISIONS			
REV.	DESCRIPTION	DATE	APPROVED
A	REDRAWN IN SW	6/2/2005	



D

D

C

C

B

B

MATERIALS	
HOUSING:	GLASS REINFORCED THERMOPLASTIC
	NICKEL PLATED BRASS HARDWARE
SCREWS:	NICKEL PLATED BRASS
RATINGS:	UL - 600V, 10A. EN 250V/4kV/3, 10A
APPROVALS:	UL & CSA

PROPRIETARY AND CONFIDENTIAL
 THE INFORMATION CONTAINED IN THIS DRAWING IS THE SOLE PROPERTY OF MENCOM CORPORATION. ANY REPRODUCTION IN PART OR AS A WHOLE WITHOUT THE WRITTEN PERMISSION OF MENCOM CORPORATION IS PROHIBITED.

	UNLESS OTHERWISE SPECIFIED:		NAME
	DIMENSIONS ARE IN INCHES AND [MM]	DRAWN	DWM
		CHECKED	
		ENG APPR.	
		MFG APPR.	
		Q.A.	
		COMMENTS:	
	MATERIAL		
	FINISH		
	DO NOT SCALE DRAWING		

MENCOM CORPORATION

TITLE:

SIZE **B** DWG. NO. **CDM-25** REV **A**

SCALE: 2:1 WEIGHT: SHEET 1 OF 1

8 7 6 5 4 3 2 1