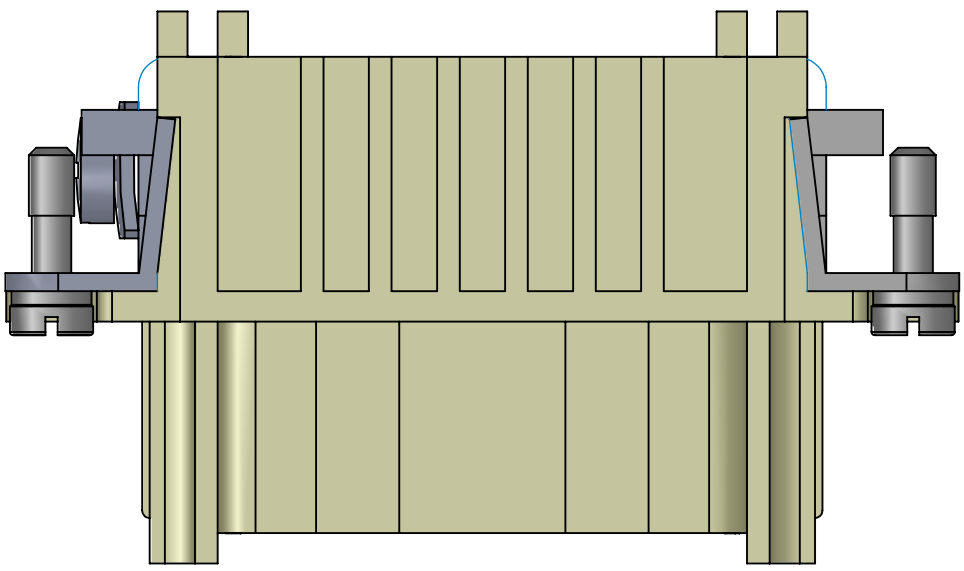
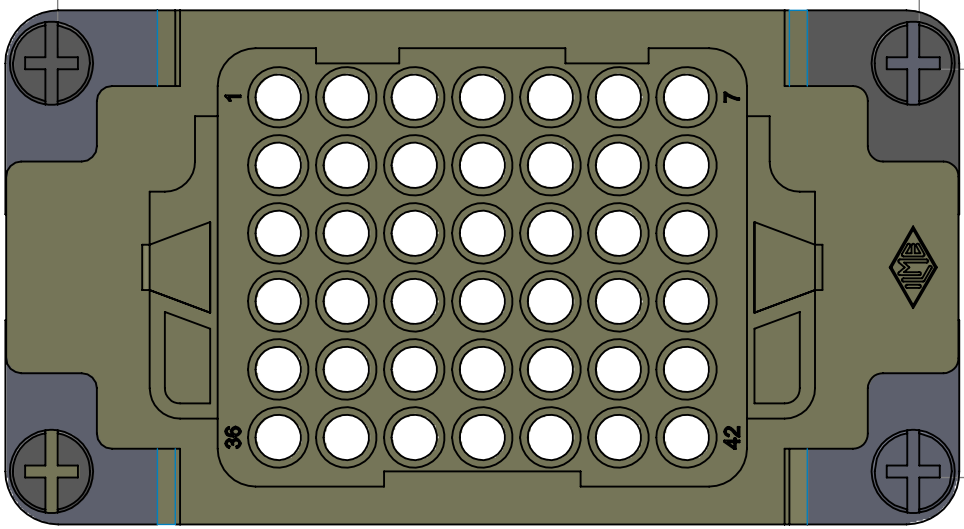


8 7 6 5 4 3 2 1

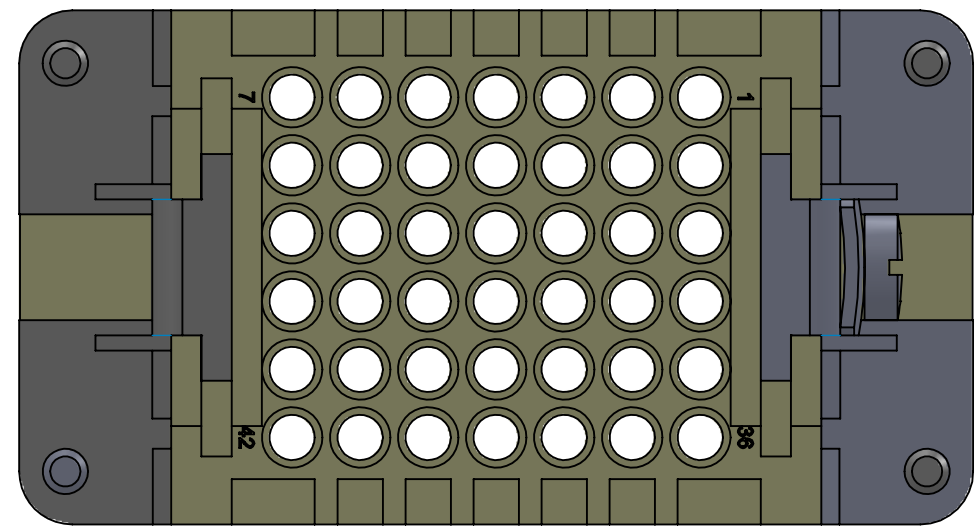
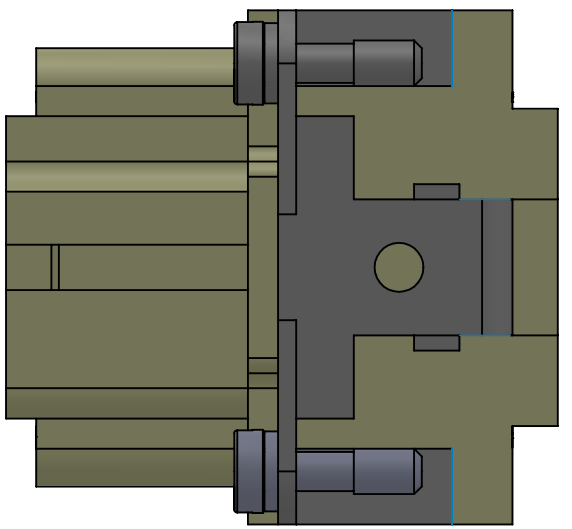
REVISIONS			
REV.	DESCRIPTION	DATE	APPROVED
A	INITIAL RELEASE	2/2/2012	DCT
B	INCREASED VIEW SCALE	12/7/2018	



[57]
2.2



[27]
1.1



MATERIALS	
HOUSING:	GLASS REINFORCED THERMOPLASTIC
SCREWS:	NICKEL PLATED BRASS HARDWARE
SCREWS:	NICKEL PLATED BRASS
RATINGS:	UL / CSA - 600V, 10A. EN 250V/4kV/3, 10
APPROVALS:	UL, CSA, & CCC

PROPRIETARY AND CONFIDENTIAL
THE INFORMATION CONTAINED IN THIS DRAWING IS THE SOLE PROPERTY OF MENCOM CORPORATION. ANY REPRODUCTION IN PART OR AS A WHOLE WITHOUT THE WRITTEN PERMISSION OF MENCOM CORPORATION IS PROHIBITED.

UNLESS OTHERWISE SPECIFIED: DIMENSIONS ARE IN INCHES AND [MM]	DRAWN BY	ADM
	DRAWN DATE	12/07/2018
	CHECKED BY	
	CHECK DATE	
MATERIAL		
FINISH		
DO NOT SCALE DRAWING		

MENCOM CORPORATION		
TITLE:		
SIZE B	DWG. NO. CDDF-42	REV B
SCALE: 2:1	WEIGHT:	SHEET 1 OF 1

8 7 6 5 4 3 2 1