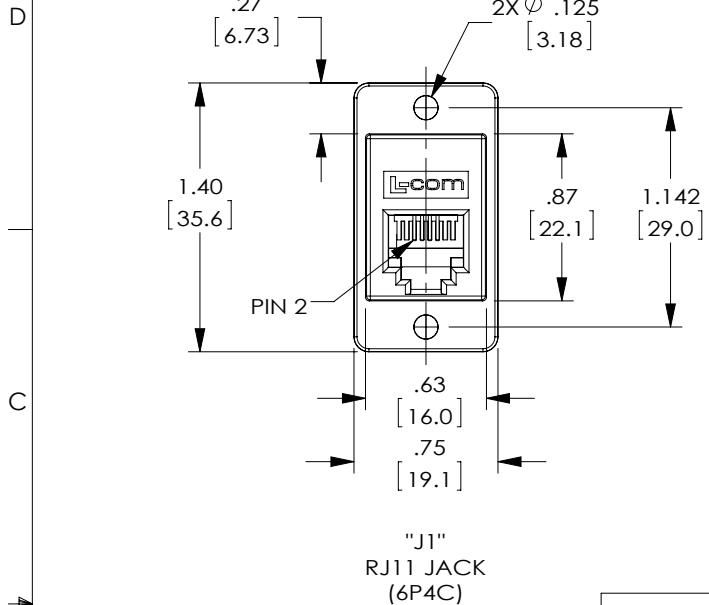


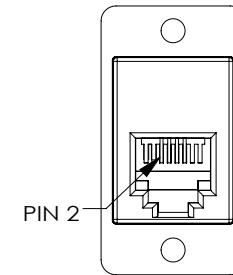
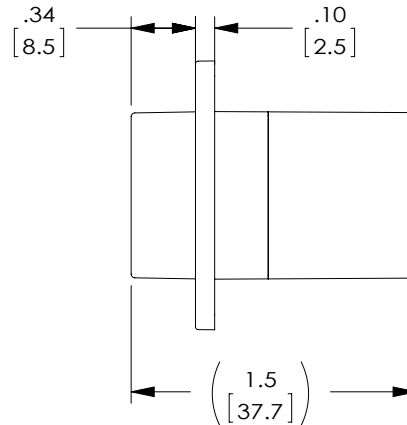
THE INFORMATION CONTAINED IN THIS DRAWING IS THE SOLE PROPERTY OF L-COM, INC.. ANY REPRODUCTION IN PART OR WHOLE WITHOUT THE WRITTEN PERMISSION OF L-COM, INC. IS PROHIBITED.

REVISIONS			
REV	DESCRIPTION	DATE	APPROVED
A	CN INITIAL RELEASE	10/27/17	D.CUI

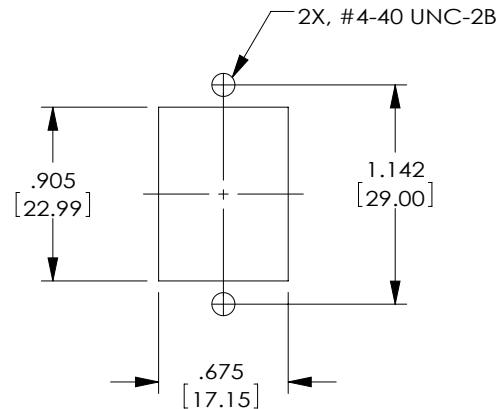


"J1"
RJ11 JACK
(6P4C)

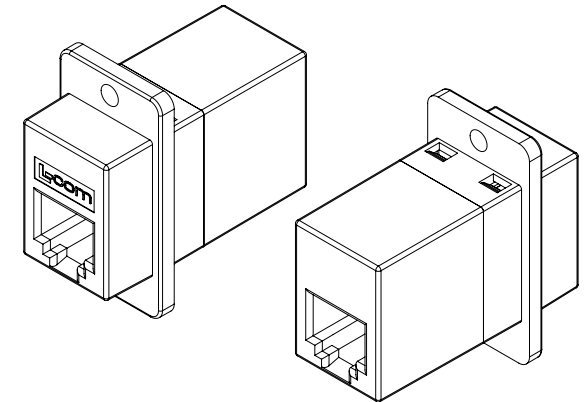
WIRING MAP	
"J1"	"J2"
2	2
3	3
4	4
5	5



"J2"
RJ11 JACK
(6P4C)



RECOMMENDED
PANEL CUTOUT



NOTES:

MATERIAL:

HOUSING:ABS,UL94V-0,COLOR:BLACK
CONTACTS:PHOSPHOR BRONZE
CONTACT PLATING:GOLD,30 μ INCHES OVER NICKEL PLATING.

ELECTRICAL:

CURRENT RATING:2 AMPS (MAX.)
VOLTAGE RATING:140 VDC


MISCELLANEOUS:

ALL DIMENSIONS SHOWN ARE FOR REFERENCE ONLY.
OPERATING TEMPERATURE RANGE: -10°C TO +70°C.
RATING APPLICATION: CATEGORY 3

COMPONENT SHALL BE INDIVIDUALLY PACKAGED IN
ACCORDANCE WITH L-COM SPECIFICATION PS-0031.

REGULATORY COMPLIANCE:

CE2011/65/EU(RoHS DIRECTIVE)

UNLESS OTHERWISE SPECIFIED, DIMENSIONS ARE IN INCHES [mm] OVERALL CABLE LENGTH TOLERANCE: ≤12 [305] = +1 [25] / -0 >12 [305] ≤60 [1524] = +2 [51] / -0 >60 [1524] ≤120 [3048] = +4 [102] / -0 >120 [3048] ≤300 [7620] = +6 [152] / -0 >300 [7620] = +5% / -0% ALL OTHER DIMENSIONAL TOLERANCES: .X = ±.2 [5.08] .XX = ±.02 [1.51] .XXX = ±.005 [1.13] PROJECTION 	APPROVALS	DATE	 Global Connectivity		50 HIGH STREET NORTH ANDOVER, MA 01845	
	DRAWN BY D.CUI	07/04/17			CATEGORY TELECOM/MODULAR	
	CHECKED BY S.PAN	07/04/17				
	APPROVED BY D.GUTTADAURO	07/04/17	PRODUCT DESCRIPTION CPLR PNL MNT 6X4 STRAIGHT BLK			
	CONFIGURATION DETAILS OF UNDIMENSIONED FEATURES MAY VARY		SIZE A	FSCM NO. 43321	DWG. NO. ECF5044S-BK	REV. A
	COLOR VARIATIONS MAY OCCUR		SCALE: NONE		CAD FILE: ECF5044S-BK.SLDDRW	SHEET 1 OF 1