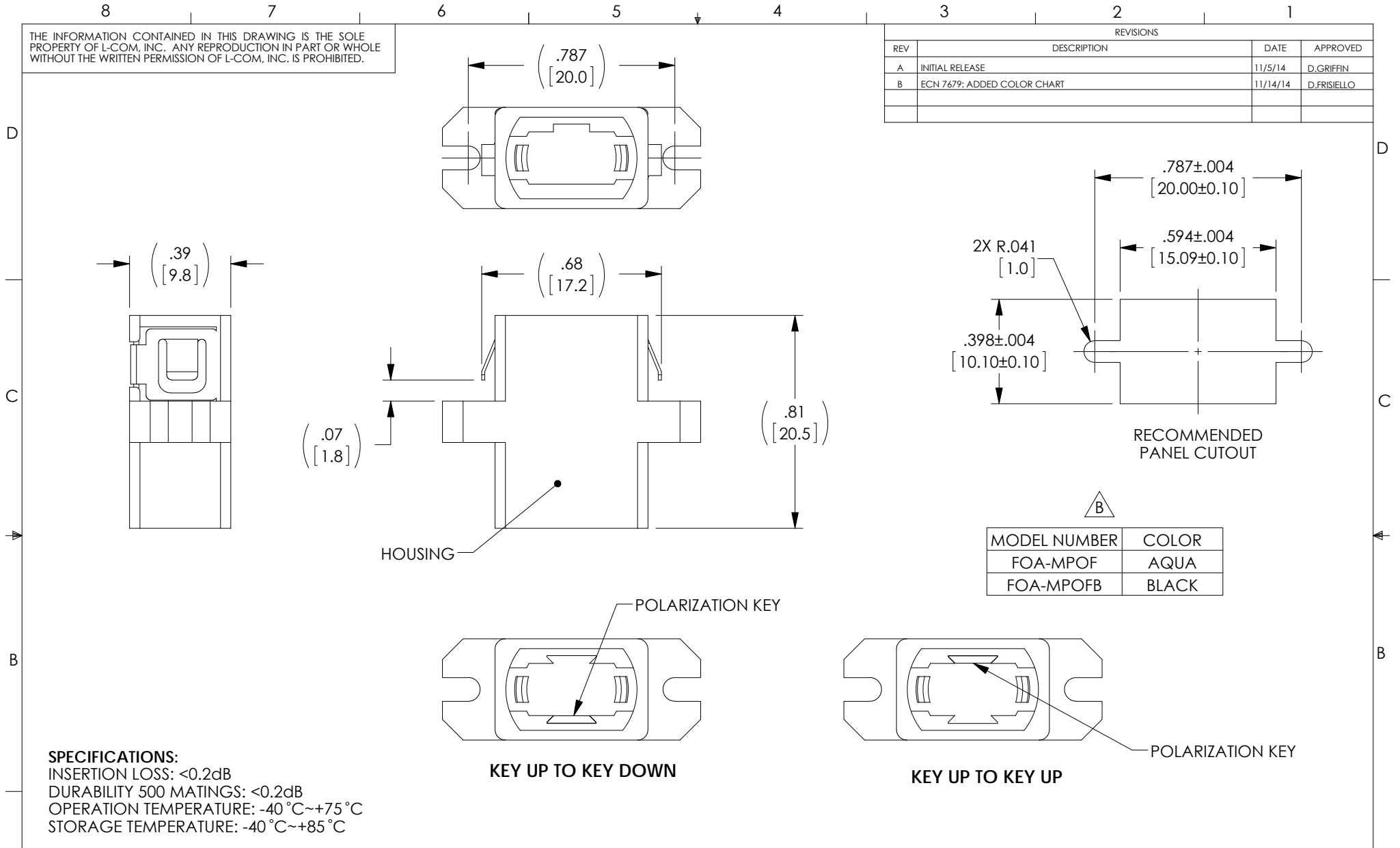


THE INFORMATION CONTAINED IN THIS DRAWING IS THE SOLE PROPERTY OF L-COM, INC. ANY REPRODUCTION IN PART OR WHOLE WITHOUT THE WRITTEN PERMISSION OF L-COM, INC. IS PROHIBITED.

REVISIONS			
REV	DESCRIPTION	DATE	APPROVED
A	INITIAL RELEASE	11/5/14	D.GRIFFIN
B	ECN 7679: ADDED COLOR CHART	11/14/14	D.FRISIELLO



**SPECIFICATIONS:**  
 INSERTION LOSS: <0.2dB  
 DURABILITY 500 MATINGS: <0.2dB  
 OPERATION TEMPERATURE: -40 °C~+75 °C  
 STORAGE TEMPERATURE: -40 °C~+85 °C

**MISCELLANEOUS:**  
 THIS COMPONENT WILL SHIP IN THE KEY UP TO KEY DOWN CONFIGURATION.  
 POLARIZATION KEY ALLOWS KEYWAY CHANGE EASILY.  
 RECOMMENDED PANEL THICKNESS .062 MAX.  
 DUST CAPS INSTALLED FOR SHIPPING (NOT SHOWN).  
 COMPONENT SHALL BE INDIVIDUALLY PACKAGED IN ACCORDANCE WITH L-COM SPECIFICATION PS-0031.

**REGULATORY COMPLIANCE:**  
 CE2011/65/EU(RoHS DIRECTIVE)

UNLESS OTHERWISE SPECIFIED, DIMENSIONS ARE IN INCHES [mm] OVERALL CABLE LENGTH TOLERANCE: ≤12 [305] = +1 [25] / -0 >12 [305] ≤60 [1524] = +2 [51] / -0 >60 [1524] ≤120 [3048] = +4 [102] / -0 >120 [3048] ≤300 [7620] = +6 [152] / -0 >300 [7620] = +5% / -0% ALL OTHER DIMENSIONAL TOLERANCES: .X = ±.2 [5.08] .XX = ±.02 [51] .XXX = ±.005 [13]	APPROVALS DRAWN BY D. CASTRO CHECKED BY D. GUITADAURO APPROVED BY D. GALLAGHER	DATE 11/4/14 11/5/14 11/5/14		45 BEECHWOOD DRIVE NORTH ANDOVER, MA 01845	
	CONFIGURATION DETAILS OF UNDIMENSIONED FEATURES MAY VARY		CATEGORY FIBER OPTICS	PRODUCT DESCRIPTION MPO COUPLER W/ FLANGE, KEYWAY CONVERTIBLE	
	PROJECTION 	COLOR VARIATIONS MAY OCCUR	SIZE <b>A</b>	FSCM NO. <b>43321</b>	DWG. NO. FOA-MPOF
	SCALE: NONE		CAD FILE: FOA-MPOF.SLDDRW		REV. <b>B</b>