

1) Sensing surface, 2) Housing, 3) Potentiometer, 4) LED function indicator



### Basic features

Approval/Conformity	CE cULus LISTED WEEE
Basic standard	IEC 60947-5-2
Scope of delivery	Screwdriver Short guide
Sensitivity	Switching distance adjustable
Series	G06

### Display/Operation

Function indicator	yes
--------------------	-----

### Electrical connection

Connection	M8x1-Male, 3-pin
Polarity reversal protected	yes
Protection against device mix-ups	yes
Short-circuit protection	yes

### Electrical data

No-load current $I_0$ max. at $U_e$	10 mA
Operating voltage $U_b$	11...30 VDC
Rated insulation voltage $U_i$	75 V DC
Rated operating current $I_e$	50 mA
Rated operating voltage $U_e$ DC	24 V
Ready delay $t_v$ max.	100 ms
Ripple max. (% of $U_e$ )	10 %
Switching frequency	100 Hz
Utilization category	DC -13
Voltage drop static max.	2 V

### Environmental conditions

Ambient temperature	-10...70 °C
Contamination scale	2
IP rating	IP65

### Functional safety

MTTF (40 °C)	444 a
--------------	-------

### Interface

Switching output	PNP normally open (NO)
------------------	------------------------

### Material

Housing material	1.4301 stainless steel
Material sensing surface	PTFE

Capacitive Sensors  
**BCS G06T4D2-PSM30G-S49G**  
**Order Code: BCS0022**



**Mechanical data**

Dimension	Ø 6.5 x 54 mm
Installation	non-flush
Size	D6.5

**Range/Distance**

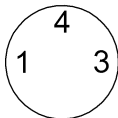
Hysteresis H max. (% of Sr)	15.0 %
Measuring range	0.1...3 mm
Rated operating distance S <sub>n</sub>	3 mm
Repeat accuracy max. (% of Sr)	2.0 %
Temperature drift max. (% of Sr)	15 %

**Remarks**

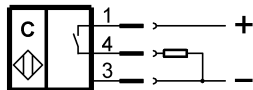
The potentiometer does not have a fixed stop, but can be turned endlessly without destroying anything.  
 If no change in the switching signal is detected, the potentiometer should be turned forwards or backwards until a signal change occurs at the output.  
 For more information about MTTF and B10d see MTTF / B10d Certificate

Indication of the MTTF- / B10d value does not represent a binding composition and/or life expectancy assurance; these are simply experiential values with no warranty implications. These declared values also do not extend the expiration period for defect claims or affect it in any way.

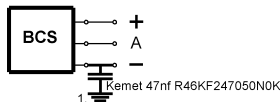
**Connector Drawings**



**Wiring Diagrams**



**Installation remarks**



1) Machine GND