

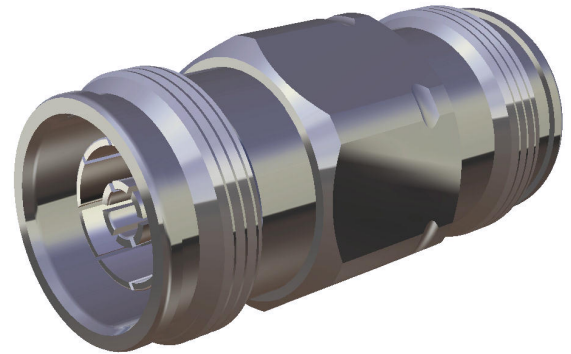
Within Series Adaptor 31_4310-50-0-1/103_W

Description

Adaptor jack/jack
4.3-10 jack (female) / 4.3-10 jack (female)

Low passive intermodulation (PIM) adaptor
For Test & Measurement applications

Interface standard
Series 4.3-10 - IEC 61169-54



Technical Data

Electrical Data

Impedance	50 Ω	
Interface frequency max.	6 GHz	
Frequency range	DC to 4 GHz	4 to 6 GHz
Return loss	≥ 22 dB	≥ 20 dB
Intermodulation	Static -166 dBc (2 x 43 dBm carrier)	

Mechanical Data

Number of matings	500
Weight	0.072 kg

Environmental Data

Operating temperature	-55 °C to 90 °C
2011/65/EU (RoHS - including 2015/863 and 2017/2102)	compliant

Material Data

Interface - 4.3-10 jack (female)

Piece Parts	Material	Surface Plating
Centre contact	Copper Beryllium Alloy	SUCOPRO Plating
Outer contact	Bronze	Silver Plating
Body	Brass	SUCOPLATE (R) Plating
Insulator	PTFE (Polytetrafluoroethylene)	

Interface - 4.3-10 jack (female)

Piece Parts	Material	Surface Plating
Centre contact	Copper Beryllium Alloy	SUCOPRO Plating
Outer contact	Bronze	Silver Plating
Body	Brass	SUCOPLATE (R) Plating
Insulator	PTFE (Polytetrafluoroethylene)	

Related Documents

Outline drawing	DOU-00289831
-----------------	--------------

Ordering Information

Single package	31_4310-50-0-1/103_WE
----------------	-----------------------