

Total Interconnection, Bridge Bars for Coil and Power Lines

V40 V10



Power Bridge Bars for Sockets
S10-M and S12

V40 bridges join four similar points in four adjacent sockets. They can join among themselves or to V10 units to bridge an unlimited number of sockets S10-M and S12 in any combination.

V10 bridges connect a single socket to the next socket, so you bridge less or more then four sockets.

Made of copper with a current capacity of 40 A.

See more information on page 11.

B20

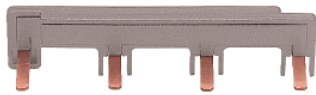


Coil Bridge Bars for Sockets
S10-M and S12

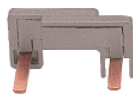
B20 bridges points A2, internally connected, of every adjacent socket S10-M or S12.

Each element connects point 6 of the first socket to point 5 of the next one, always leaving free the point 5 of the first socket and the point 6 of the last socket, to connect the common polarity cable.

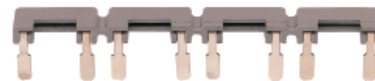
See more information on page 11.



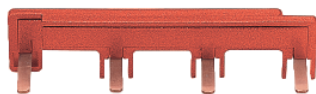
V40-G



V10-G



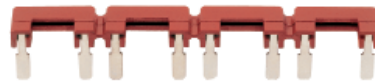
B20-G



V40-R



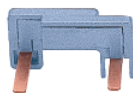
V10-R



B20-R



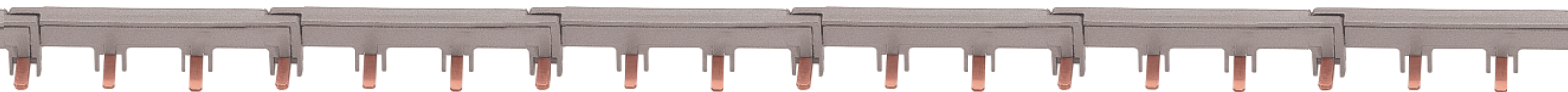
V40-A



V10-A



B20-A



IEC 61810 EN 60947

IRC relays, E version

Types C14... and C15...

Cover for flange panel mounting

Ordering code:

Add "E" to the standard type code.

Example: C14-A10E or C15-A21E

