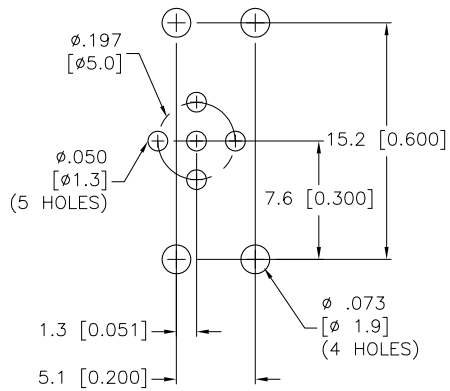
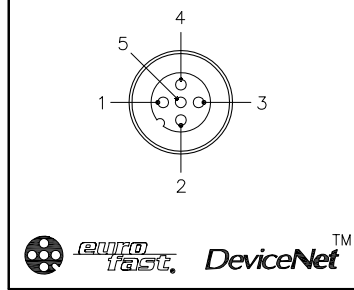


BOARD LAYOUT

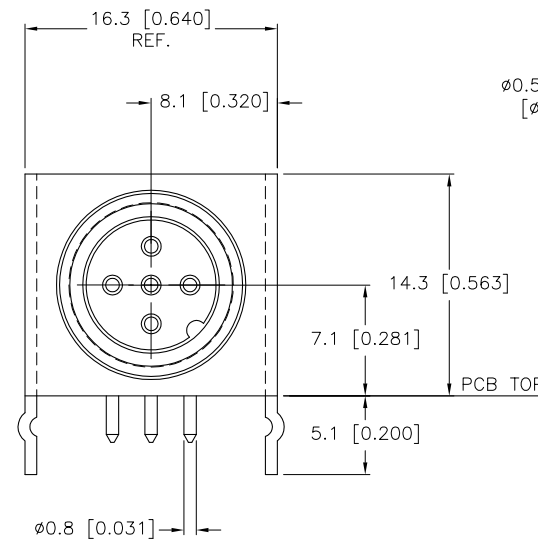
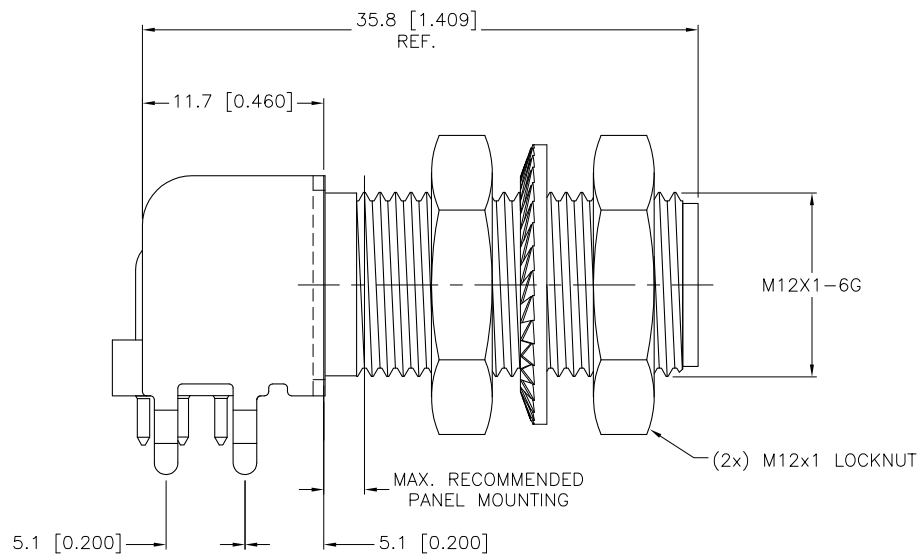


MALE END VIEW



SPECIFICATIONS

CONTACT CARRIER MATERIAL/COLOR	NYLON OR TPU/BLUE-GRAY
CONTACT MATERIAL/PLATING	BRASS/GOLD
HOUSING, LOCKNUT MATERIAL/PLATING	BRASS/NICKEL
RATED CURRENT [A]	4.0 A
RATED VOLTAGE [V]	30 VAC/36 VDC
NUMBER OF CONDUCTORS [AWG]	PRINTED CIRCUIT PINS
TEMPERATURE RATING	-40°C to +80°C (-40°F to +176°F)
PROTECTION CLASS	MEETS NEMA 1,3,4,6P AND IEC IP68



MOUNTING HOLE

LOCKNUT NOT SHOWN

UNIT SNAP-FITS INTO 0.062 TO 0.125 THICK PC BOARDS.
SOURCE DRAWING - FOR REFERENCE ONLY

NOTE:

- SPACER PERMANENTLY ATTACHED TO PINS FOR ALIGNMENT.
- "/C1262" INDICATES TWO LOCK NUTS (01038804) AND ONE LOCKWASHER (11061405) ADDED TO STANDARD RECEPTACLE.

RELATED DOCUMENTS 1. U2369-2 2. 3. 4.	3RD ANGLE PROJECTION 	THIS DRAWING IS PROPERTY OF TURCK INC. USE OF THIS DOCUMENT WITHOUT WRITTEN PERMISSION IS PROHIBITED.		3000 CAMPUS DRIVE MINNEAPOLIS, MN 55441 1-800-544-7769 (763) 553-7300 (763) 553-0708 fax turck.com	
	MATERIAL	DRFT RDS	DATE 05/01/07	DESCRIPTION WFS 57-PCB/C1262	
FINISH	ALL DIMENSIONS DISPLAYED ON THIS DRAWING ARE FOR REFERENCE ONLY	DSGN AA	SCALE 2=1.0	IDENTIFICATION NO. U3-10533	
	CONTACT TURCK FOR MORE INFORMATION	UNIT OF MEASUREMENT MILLIMETER [INCH]		REV B	
		DO NOT SCALE THIS DRAWING		FILE: U3-10533	SHEET 1 OF 1

B	DRAWING PROCESSED AS PART OF ECO 33971	CBM	04/07/11	33971
REV	DESCRIPTION	BY	DATE	ECO NO.