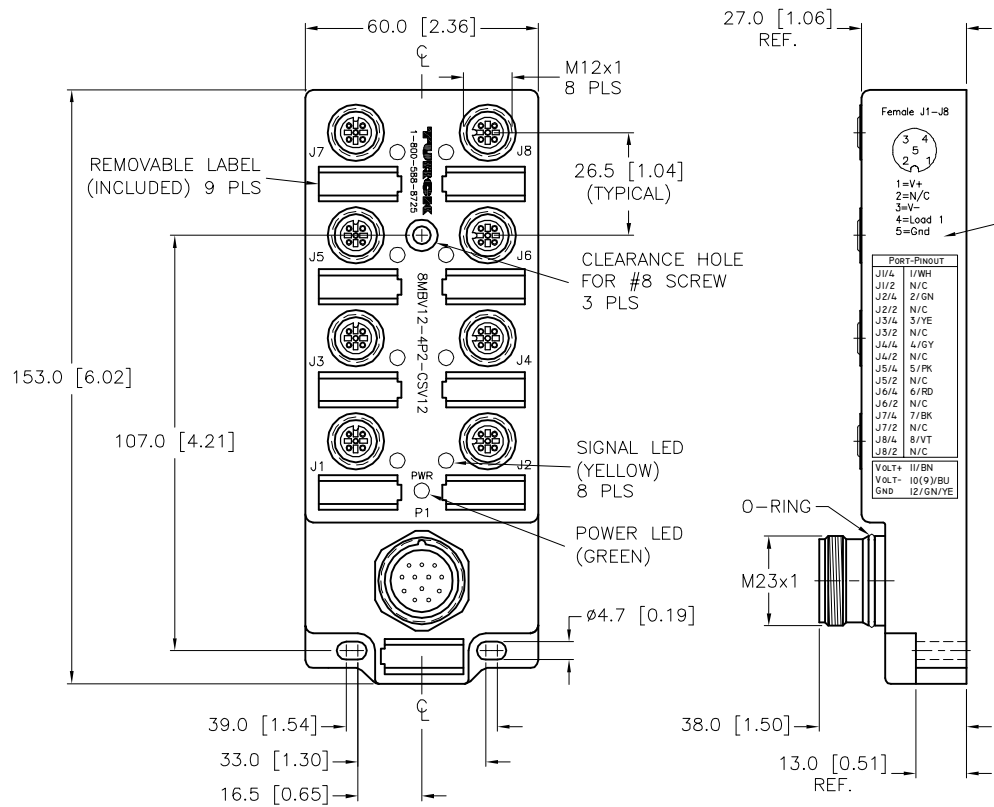
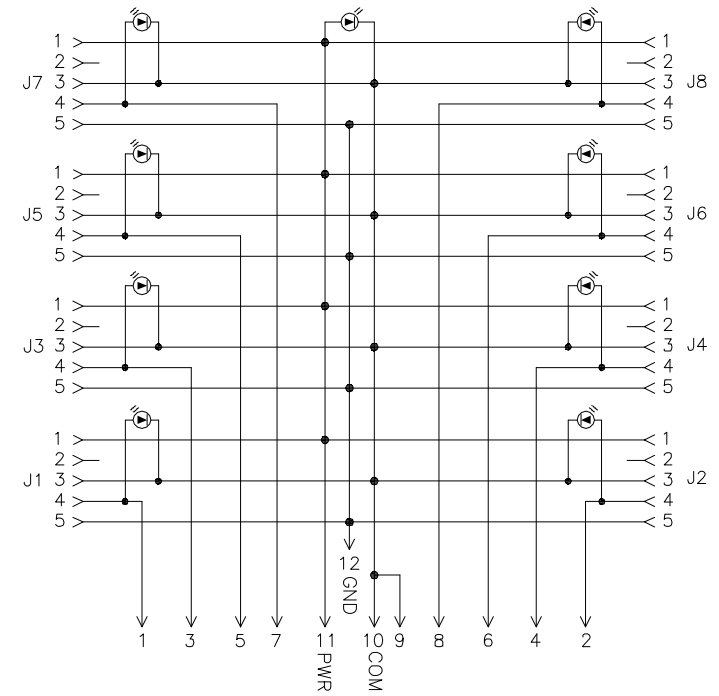


SPECIFICATIONS	
MATERIAL	
HOUSING/COLOR	NYLON/BLACK
RECEPTACLES	STAINLESS STEEL/PASSIVATED
CONTACT CARRIERS/COLOR	NYLON/BLACK (J1-J8), PBT/WHITE (P1)
CONTACTS	GOLD-PLATED BRASS
SEALING RING	VITON O-RINGS
ELECTRICAL DATA	
OPERATING VOLTAGE	10-48 VDC
OPERATING CURRENT	4.0 AMPS PER PORT, 8.0 AMPS TOTAL
LED CURRENT	12mA MAX AT 48VDC SUPPLY VOLTAGE(PER LED)
SPACINGS	to VDE 0110 GROUP C
MECHANICAL DATA	
PROTECTION CLASS to DIN 40050	IP 67 - ONLY WHEN ALL RECEPTACLES ARE COVERED WITH PLUGS OR CONNECTED
OPERATING TEMPERATURE	-30°C to +80°C (-25°F to +176°F)



ELECTRICAL DATA PRINTED FAR SIDE



WIRING DIAGRAM

SOURCE DRAWING - FOR REFERENCE ONLY



CLOSURE CAPS (2 INCLUDED)

RELATED DOCUMENTS
1. 2. 3. 4.
MATERIAL SEE SPECIFICATIONS
FINISH SEE SPECIFICATIONS

3RD ANGLE PROJECTION
ALL DIMENSIONS DISPLAYED ON THIS DRAWING ARE FOR REFERENCE ONLY
CONTACT TURCK FOR MORE INFORMATION

THIS DRAWING IS CONFIDENTIAL AND THE PROPERTY OF TURCK INC. USE OF THIS DOCUMENT WITHOUT WRITTEN PERMISSION IS PROHIBITED.	
DRFT DD	DATE 10/10/03
APVD	SCALE 1=2
UNIT OF MEASUREMENT MILLIMETER [INCH]	
DO NOT SCALE THIS DRAWING	

3000 CAMPUS DRIVE MINNEAPOLIS, MN 55441 1-800-544-7769 (763) 553-7300 (763) 553-0708 fax www.turck.us	
TURCK	
DESCRIPTION 8MBV12-4P2-CSV12	
IDENTIFICATION NO. U0943-98	REV C
FILE: U0943-98	SHEET 1 OF 1

REV	DESCRIPTION	BY	DATE	ECO NO.
C	UPDATED CLOSURE CAPS	TV	09/15/15	48811