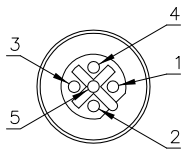
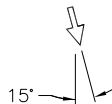
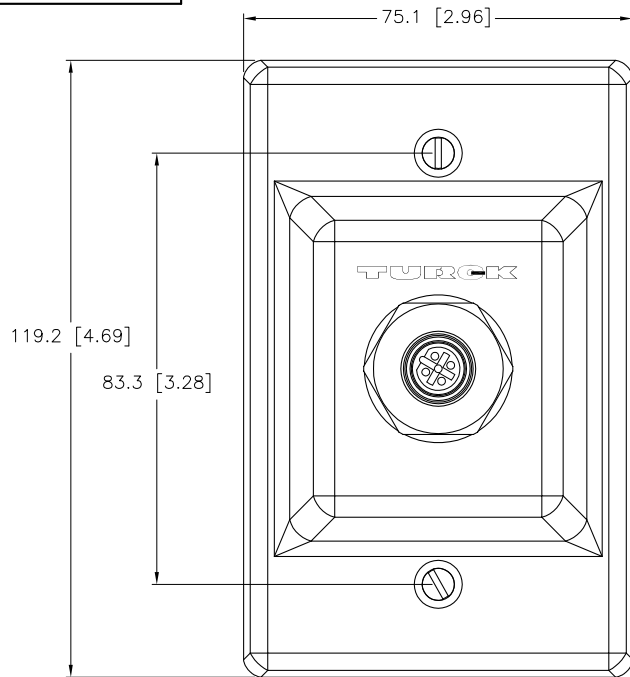


# FEMALE END VIEW



- 1 = N/C
- 2 = GREEN (BUS\_A)
- 3 = N/C
- 4 = RED (BUS\_B)
- 5 = BARE (SHIELD)



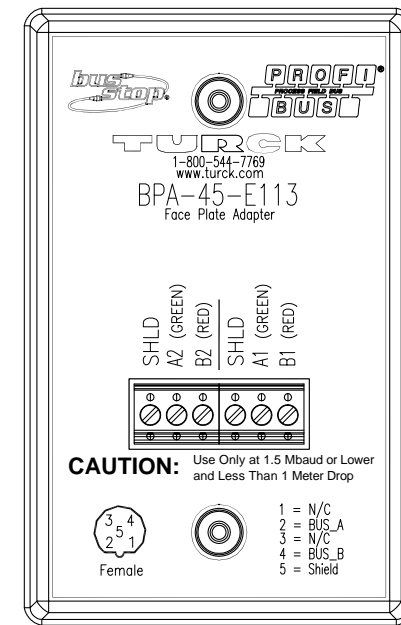
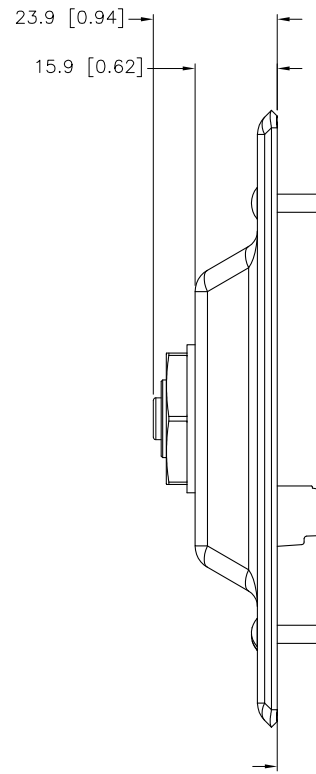
## NOTES:

1. GASKET NOT SHOWN FOR CLARITY.
2. DATA RATE MUST BE < 1.5 MBAUD
3. DROP LENGTHS MUST BE < 1 METER.

↑ = 90° CORDSET CABLE DIRECTION

# SPECIFICATIONS

WALL PLATE MATERIAL	16 GA. 316 STAINLESS STEEL
RECEPTACLE HOUSING MATERIAL	STAINLESS STEEL, PASSIVATED
SEALING GASKET MATERIAL	CLOSED CELL POLYETHYLENE FOAM
MOUNTING HARDWARE (SUPPLIED)	6-32 SCREWS, STAINLESS STEEL
CONTACT CARRIERS/COLOR	NYLON OR TPU/BLACK
CONTACTS	BRASS/GOLD
OPERATING VOLTAGE	250 V
OPERATING CURRENT	4.0 A
PROTECTION CLASS to DIN 40050	IP 67 – ONLY WHEN ALL RECEPTACLES ARE COVERED WITH PLUGS OR CONNECTED
OPERATING TEMPERATURE	-40°C to +70°C (-40°F to +158°F)



## SOURCE DRAWING - FOR REFERENCE ONLY

RELATED DOCUMENTS		3RD ANGLE PROJECTION		<div>THIS DRAWING IS PROPERTY OF TURCK INC. USE OF THIS DOCUMENT WITHOUT WRITTEN PERMISSION IS PROHIBITED.</div> <div><b>TURCK inc</b></div> <div>High Technology Sensors and Automation Controls</div>		<div>3000 CAMPUS DRIVE MINNEAPOLIS, MN 55441 1-800-544-7769 (763) 553-7300 (763) 553-0708 fax turck.com</div>		
1. 2. 3. 4.								
MATERIAL		DRFT DF		DATE 08/24/05		DESCRIPTION  BPA-45-E113		
		DSGN DF		SCALE 1=1.5				
FINISH		ALL DIMENSIONS DISPLAYED ON THIS DRAWING ARE FOR REFERENCE ONLY		UNIT OF MEASUREMENT  MILLIMETER [ INCH ]		IDENTIFICATION NO.		REV
						U3-00627		C
		CONTACT TURCK FOR MORE INFORMATION		DO NOT SCALE THIS DRAWING		FILE: U3-00627		SHEET 1 OF 1

C	DRAWING PROCESSED AS PART OF ECO 33971	CBM	04/07/11	33971
REV	DESCRIPTION	BY	DATE	ECO NO.