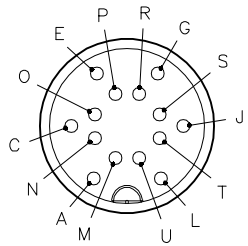


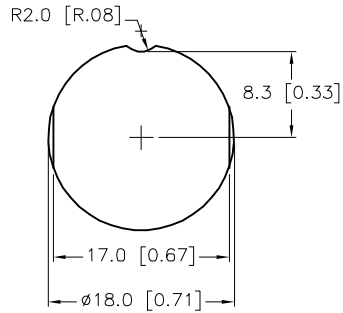
MALE END VIEW



- A = BROWN
- C = RED/BLUE
- E = BLACK
- G = PINK
- J = GREEN
- L = BLUE
- M = ORANGE
- N = GREY/BROWN
- O = VIOLET
- P = WHITE
- R = RED
- S = GREY
- T = YELLOW
- U = TAN

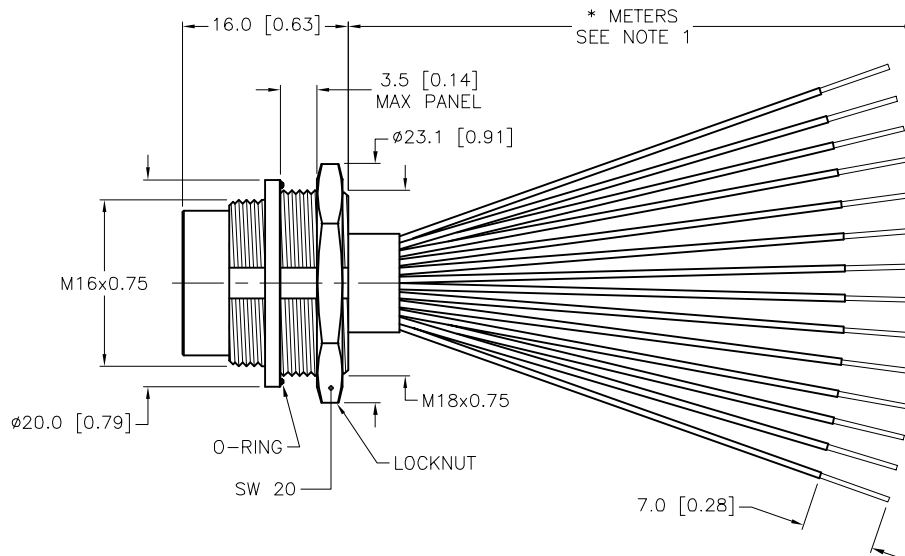
M16 connector

PANEL CUTOUT/OPTIONS



SPECIFICATIONS

| | |
|----------------------------|----------------------------------|
| CONTACT CARRIER MATERIAL | NYLON |
| CONTACT MATERIAL/PLATING | COPPER ALLOY/GOLD |
| HOUSING MATERIAL/PLATING | BRASS/NICKEL |
| RATED CURRENT [A] | 3.0 A |
| RATED VOLTAGE [V] | 30 VAC/VDC |
| NUMBER OF CONDUCTORS [AWG] | 14x24 AWG |
| TEMPERATURE RANGE | -30°C to +80°C (-22°F to +176°F) |
| PROTECTION CLASS | MEETS IEC IP67 |



| CABLE LENGTH | TOLERANCE * |
|--------------|---|
| ALL LENGTHS | + 4% (OR 50mm) OF LENGTH - 0% (OR 0mm) OF LENGTH WHICHEVER IS GREATER |
| STRIP LENGTH | TOLERANCE * |
| 0-7mm | ±0.5mm |
| 8-29mm | ±1.0mm |
| 30-49mm | ±2.0mm |
| 50-69mm | ±3.0mm |
| 70-100mm | ±4.0mm |
| OVER 100mm | ±5.0mm |

* UNLESS OTHERWISE SPECIFIED

NOTES:

1. "*" INDICATES LEAD LENGTH IN METERS. CONTACT TURCK TO ORDER SPECIFIC LENGTHS.

SOURCE DRAWING - FOR REFERENCE ONLY

| | | | | | |
|---|---|--|-----------------------------|--|--------------|
| RELATED DOCUMENTS 1. 2. 3. 4. | 3RD ANGLE PROJECTION | THIS DRAWING IS CONFIDENTIAL AND THE PROPERTY OF TURCK INC. USE OF THIS DOCUMENT WITHOUT WRITTEN PERMISSION IS PROHIBITED. | | 3000 CAMPUS DRIVE MINNEAPOLIS, MN 55441 1-800-544-7769 (763) 553-7300 (763) 553-0708 fax www.turck.us | |
| | MATERIAL SEE SPECIFICATIONS | DRFT JBJ APVD | DATE 09/24/03 SCALE 1=.7 | DESCRIPTION BSF 14-14-* | |
| FINISH SEE SPECIFICATIONS | ALL DIMENSIONS DISPLAYED ON THIS DRAWING ARE FOR REFERENCE ONLY | UNIT OF MEASUREMENT MILLIMETER [INCH] | | IDENTIFICATION NO. | REV E |
| | | DO NOT SCALE THIS DRAWING | | FILE: 777002563 | SHEET 1 OF 1 |

| | | | | |
|-----|-----------------------------------|-----|----------|---------|
| E | UPDATE END VIEW GRAPHICS, SEE ECO | RWC | 03/06/09 | 18075 |
| REV | DESCRIPTION | BY | DATE | ECO NO. |