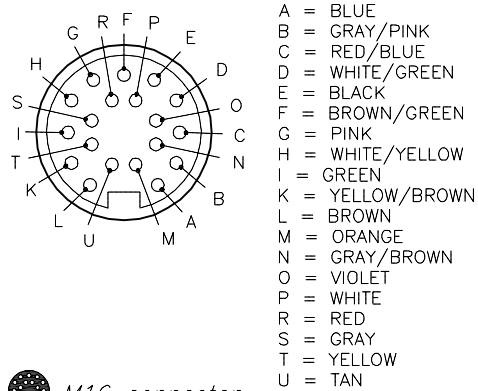
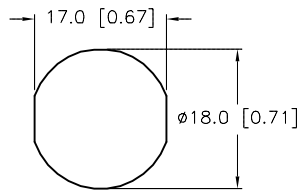


FEMALE END VIEW



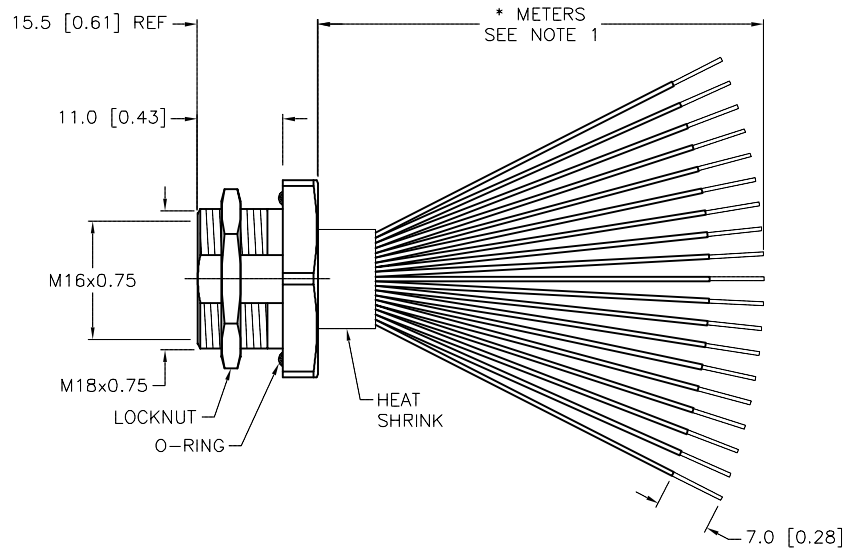
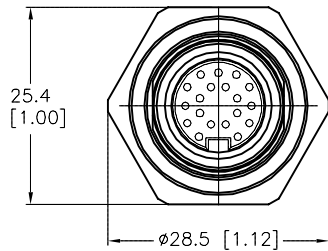
M16 connector

PANEL CUTOUT



SPECIFICATIONS

|                                |                                   |
|--------------------------------|-----------------------------------|
| CONTACT CARRIER MATERIAL/COLOR | TPU/BLACK                         |
| CONTACT MATERIAL/PLATING       | BRASS/GOLD                        |
| HOUSING MATERIAL/FINISH        | STAINLESS STEEL/PASSIVATED        |
| O-RING MATERIAL                | NITRILE (BUNA N)                  |
| RATED CURRENT [A]              | 3.0 A                             |
| RATED VOLTAGE [V]              | 30 VAC/VDC                        |
| CONDUCTOR INSULATION MATERIAL  | PVC                               |
| NUMBER OF CONDUCTORS [AWG]     | 19x22 AWG                         |
| TEMPERATURE RANGE              | -40°C to +105°C (-40°F to +221°F) |
| PROTECTION CLASS               | MEETS NEMA IEC IP67               |



| CABLE LENGTH | TOLERANCE*  |
|--------------|---|
| ALL LENGTHS  | + 4% (OR 50mm) OF LENGTH<br>- 0% (OR 0mm) OF LENGTH<br>WHICHEVER IS GREATER |
| STRIP LENGTH | TOLERANCE*  |
| 0-7mm        | ±0.5mm  |
| 8-29mm       | ±1.0mm  |
| 30-49mm      | ±2.0mm  |
| 50-69mm      | ±3.0mm  |
| 70-100mm     | ±4.0mm  |
| OVER 100mm   | ±5.0mm  |

\* UNLESS OTHERWISE SPECIFIED

NOTES:

1. "\*" INDICATES LEAD LENGTH IN METERS. CONTACT TURCK TO ORDER SPECIFIC LENGTH.

SOURCE DRAWING - FOR REFERENCE ONLY

|   |   |  |               |  |  |
|---|---|--|---------------|--|--|
| RELATED DOCUMENTS<br>1.<br>2.<br>3.<br>4. | 3RD ANGLE PROJECTION<br>  | THIS DRAWING IS CONFIDENTIAL AND THE PROPERTY OF TURCK INC. USE OF THIS DOCUMENT WITHOUT WRITTEN PERMISSION IS PROHIBITED. |               | 3000 CAMPUS DRIVE<br>MINNEAPOLIS, MN 55441<br>1-800-544-7769<br>(763) 553-7300<br>(763) 553-0708 fax<br>www.turck.us |  |
|   |   | DRFT GAR   | DATE 08/17/07 | DESCRIPTION<br>BKFDV 19-19-*/M18   |  |
| MATERIAL<br>SEE SPECIFICATION             | ALL DIMENSIONS DISPLAYED ON THIS DRAWING ARE FOR REFERENCE ONLY | DSGN   | SCALE 1=1.0   | IDENTIFICATION NO.   |  |
| FINISH<br>SEE SPECIFICATION               |   | UNIT OF MEASUREMENT<br><b>MILLIMETER [ INCH ]</b>  |               | REV<br>D   |  |
| DO NOT SCALE THIS DRAWING                 |   | FILE: 777018977  |               | SHEET 1 OF 1   |  |

|     |  |     |          |         |
|-----|--|-----|----------|---------|
| D   | DRAWING PROCESSED AS PART OF ECO 33971 | CBM | 04/06/11 | 33971   |
| REV | DESCRIPTION                            | BY  | DATE     | ECO NO. |