

Pi Supply PoE Switch HAT Case Assembly

Description

Our custom designed Pi PoE Switch HAT Case is the perfect enclosure for our Power over Ethernet Raspberry Pi HAT and a Raspberry Pi. It is perfect for removing the clutter of wires and protecting your Raspberry Pi and Pi PoE HAT from any potential damage. The four holes and rail along each side of the case provide you with the option to mount this case on any surface with screws. The case is available in black.

This case is designed to be compatible with the Pi Supply PoE HAT and also the official Raspberry Pi PoE HAT.

Case Assembly

The Pi PoE Switch HAT Case is the perfect enclosure for the Pi PoE Switch HAT and the Raspberry Pi. It has been designed so that it can still allow access to the power button.



Step 1 – After removing the protective plastic pull gently out the two sides of the bottom part of the case to unhook the top.

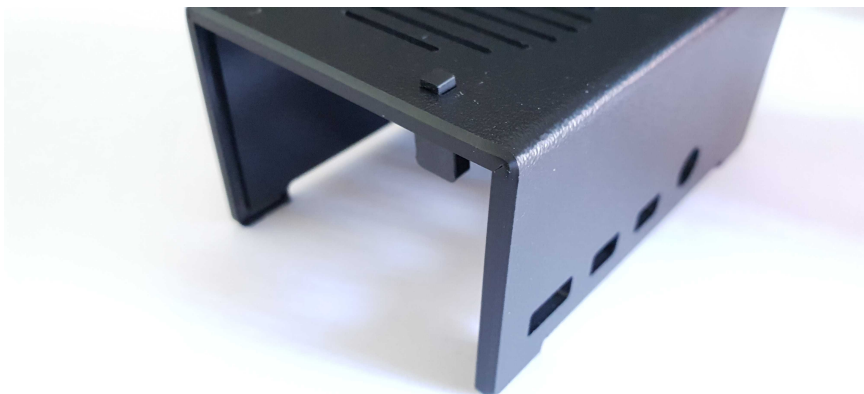


This should allow you to detach the top cover and easily take a part the case.

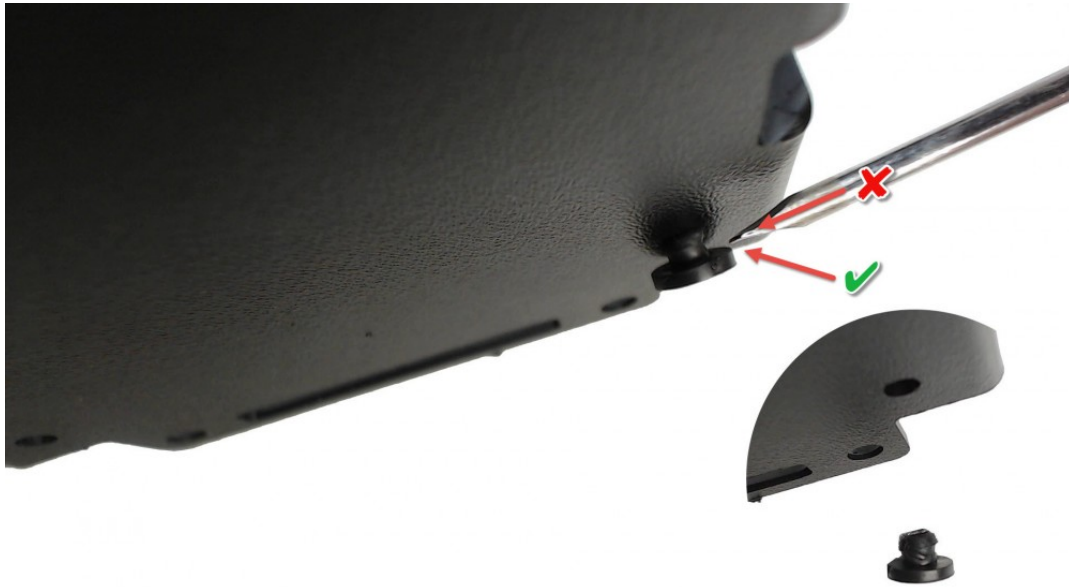
Within the case you will find 4 rubber feet and a plastic bit used to provide access to the Pi PoE power button. Here is how it will look like once opened.



Step 2 - Insert the plastic button extender through the hole of the top part of the case..



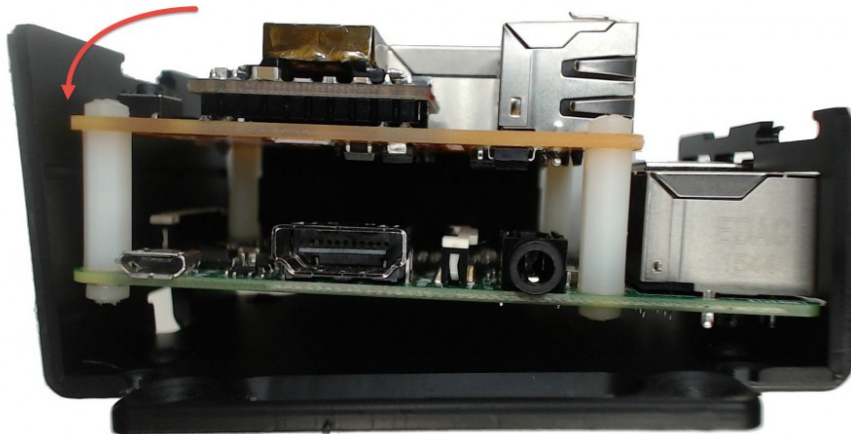
Step 3 - To install the rubber feet on the bottom part of the case you will either have to push and twist them through one of the 4 the holes or help yourself with a small screwdriver to tuck in the top part of the feet within the hole as shown on the left. Be careful not to cut through the feet and rather than using the tip of the screwdriver use the flat surface to push the head of rubber foot in



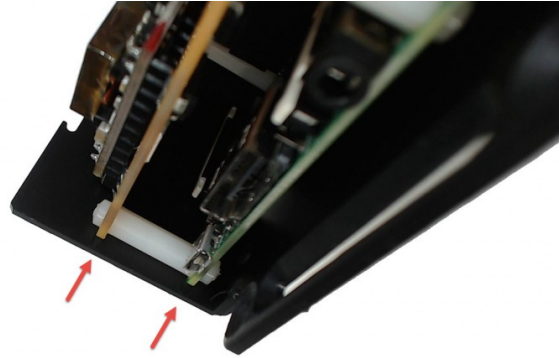
Step 4 – Currently the case will fit together with a Raspberry Pi 4 but there are also some cutouts that can be pushed through to allow compatibility with the 3B+ and models below this. Take a small pointed tool such as a screwdriver and push through cutout. This will allow the HDMI connector to become accessible.



Step 5 – Insert the Raspberry Pi and the Pi PoE in the bottom part of the case by first placing the USB connectors in.



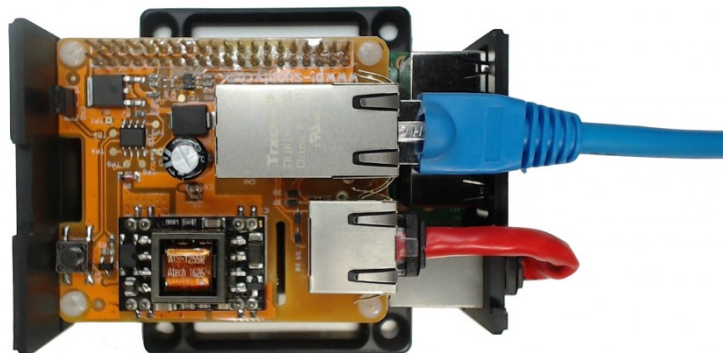
The PCBs of the two boards should be aligned within the grooves of the panel as shown in the picture.



Step 6 - Take the small Ethernet cable and connect it between the Raspberry Pi and the Pi PoE.



Step 7 - Connect the Ethernet cable coming from the PoE switch or from the injector.



Step 8 – Slide the top part of the case back in place. As you do that gently pull out each side of the top part of the case so to allow the connectors of the Raspberry Pi to slot into place.



At this point the Pi PoE Switch HAT is ready to be used.

Note: The case has been designed with wall fixing features.





Raspberry Pi 3B+



Raspberry Pi 4B