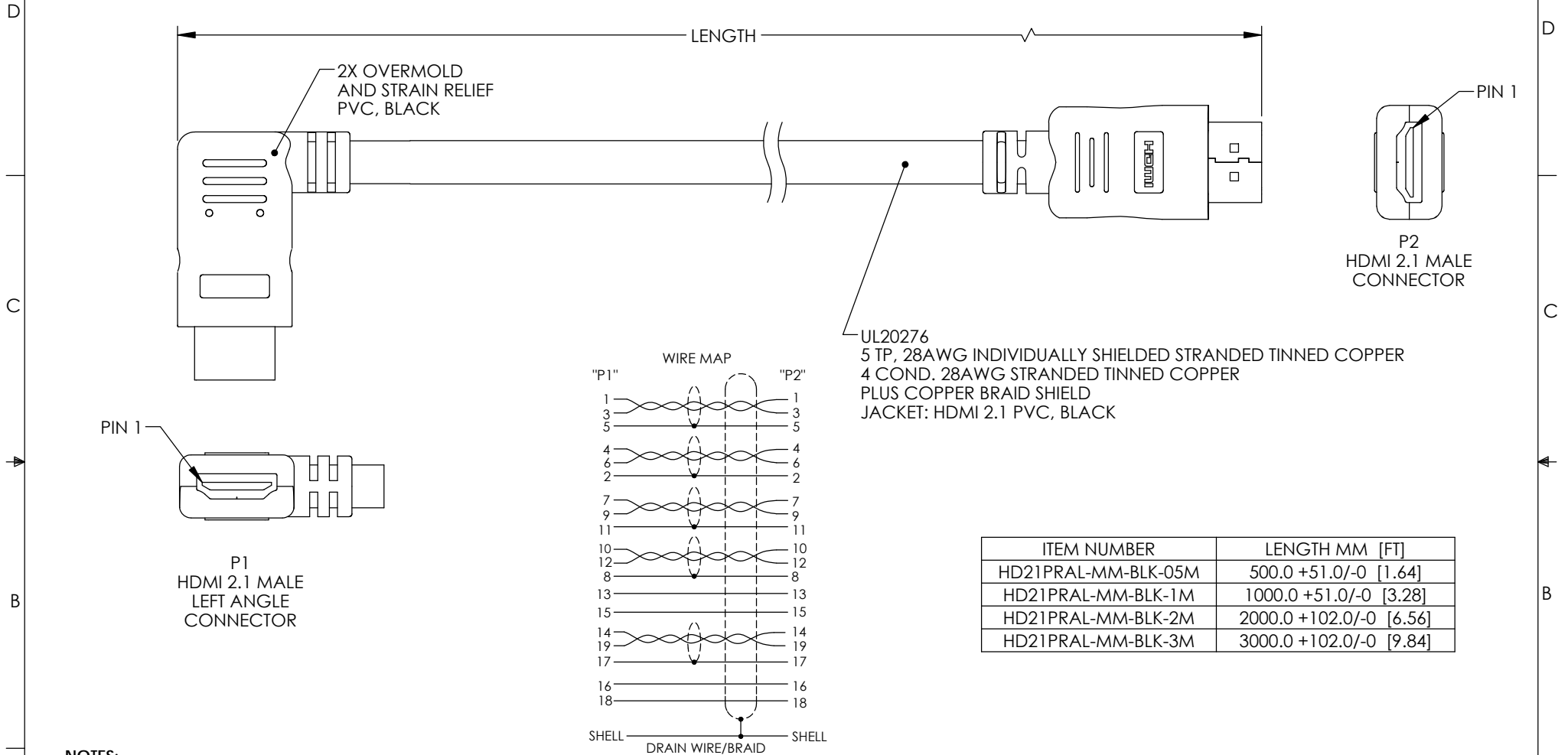


THE INFORMATION CONTAINED IN THIS DRAWING IS THE SOLE PROPERTY OF L-COM, INC. ANY REPRODUCTION IN PART OR WHOLE WITHOUT THE WRITTEN PERMISSION OF L-COM, INC. IS PROHIBITED.

REVISIONS			
REV	DESCRIPTION	DATE	APPROVED
A	INITIAL RELEASE	02/01/2022	dguttadauro



NOTES:

- VOLTAGE TEST: DC 300V 10MS
INSULATION RESISTANCE: 5.0M ohm/min.
CONDUCTANCE RESISTANCE: 5.0 ohm/max.
- DUST CAPS INSTALLED AT SHIPPING. (NOT SHOWN)
- CABLE ASSEMBLY SHALL BE TESTED FOR CONTINUITY.
- CABLE ASSEMBLY SHALL BE INDIVIDUALLY PACKAGED IN ACCORDANCE WITH L-COM SPECIFICATION PS-0031.

REGULATORY COMPLIANCE:

EU RoHS DIRECTIVE (MOST RECENT RELEASED VERSION)

UNLESS OTHERWISE SPECIFIED, DIMENSIONS ARE IN INCHES [mm] OVERALL CABLE LENGTH TOLERANCE: ≤12 [305] = +1 [25] / -0 >12 [305] ≤60 [1524] = +2 [51] / -0 >60 [1524] ≤120 [3048] = +4 [102] / -0 >120 [3048] ≤300 [7620] = +6 [152] / -0 >300 [7620] = +5% / -0 ALL OTHER DIMENSIONAL TOLERANCES: .X = ± .2 [5] FRACTIONS ± 1/32 .XX = ± .02 [.5] ANGLES ± 1° .XXX = ± .005 [.13]	APPROVALS	DATE	 50 High Street, West Mill, North Andover, MA 01845 USA. Phone: 1.800.341.5266 1.978.682.6936
	DRAWN BY DFRISIELLO	02/01/2022	
CHECKED BY DGUST	02/01/2022	PRODUCT DESCRIPTION HDMI 2.1 Cable, M/RA-LEFT-M, PVC, BLK	
APPROVED BY dguttadauro	02/01/2022		CONFIGURATION DETAILS OF UNDIMENSIONED FEATURES MAY VARY COLOR VARIATIONS MAY OCCUR
THIRD-ANGLE PROJECTION		SIZE A	CAGE CODE 43321
		ITEM NO. HD21PRAL-MM-BLK	REV. A
		SCALE: NONE	CAD FILE: HD21PRAL-MM-BLK.SLDDRW
		SHEET 1 OF 1	